



# LARSON RANCH

**Welcomes you**

**to the 48th Annual Bull  
and Bred Heifer Sale.**

**VOLUME DISCOUNT**

**CHAROLAIS ★ ANGUS ★ SIMMENTAL  
MAINE ANJOU**

**Wednesday, February 22, 2017**

**12:30 p.m. CST**

***Complimentary Noon Meal***

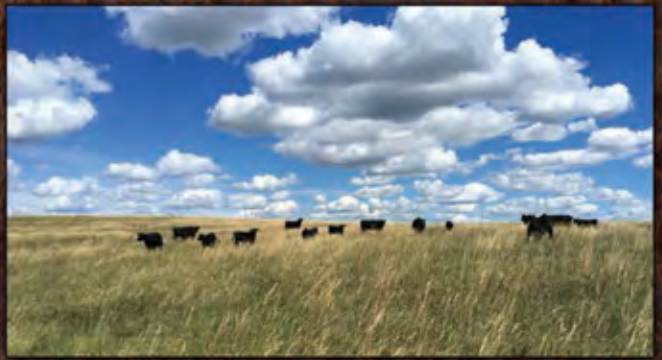
**(Storm Date: Saturday, February 25, 2017, 1 p.m. CST)**

**Presho Livestock Auction, Inc.**

**Presho, South Dakota • Sale Day Phone 895-2553 • Online bidding at [www.DVauction.com](http://www.DVauction.com)**









# THANK YOU ALL FOR COMING TO OUR SALE

You can also view online at [www.DVAuction.com](http://www.DVAuction.com)

Greetings from all of the Larson family. We personally look forward to seeing all of you for our 48th annual production sale, Wednesday, February 22, 2017 at Presho Livestock.

The Larson family is now in its 108th year and the 5th generation is now part of the operation. God has blessed us so richly to allow us to be caretakers this many years. We derive our living from the land with cattle being our main portion of the ranch, along with farming, horses and hunting. We aren't a corporation; but three generations of families working side-by-side each day.

It has indeed been a year with strong trials and tribulations, but also with even greater miracles and blessings!! Words cannot express our gratitude for such fantastic neighbors, friends, and family who are always there when needed.

This has been an interesting year of marketing and rainfall. Even though prices have backed up, calves are still selling very decent, with the top genetic calves selling for a profit yet! We have entered the age where we have to produce the best product we can and market correctly. Top quality cattle will always be more efficient and bring a better, price giving you a better profit margin! We still have a long ways to go in rebuilding our cattle numbers and consumption of beef continues to grow.

We are so humbled and grateful for your years of confidence in our program and working together to improve all of our programs. We believe in working together and using the genetic packages we have put together; there will be some very profitable years ahead of us all.

Now is the perfect time to weigh up that old bull, or cow and get the newest genetics possible into your herd. By doing so you will be able to sell more pounds of beef the next few years with less input and capitalize on these future record prices in the next few years.

This year we put the bulls on a moderate Mega- Cal ration of ground hay, straw, loose hay, 5 pounds of modified distillers. This shows the genetics in the cattle's capacity to grow without doing it with the feed wagon. This is the best way to find out true cattle efficiency and profitability,(we like to grow the bulls/not burn them out). With the help of God, we hope to continue for the next 100 years of the cattle and horse industry. It takes good friends like you, to work with, to make it all worthwhile and we appreciate your support and confidence in our program. We always look forward to seeing each and every one of you.

You will see from cover to cover, we have done our best to put together complete package of cattle that will complement all your herds. We feel so confident in this set of bulls, once again we are retaining 1/3 revenue sharing semen interest in all of the bulls. This means the purchaser gets full possession and 2/3 semen interest. If we would like to collect some of the bulls, we will sched-



*Paiden and Kord*

ule with the purchaser as to when it will work for their schedule. If any semen is sold from any of the bulls, The Larsons would receive 1/3 of the sales.

All of the bull have tested NEGATIVE for BVD. They have been vaccinated with Express 5 PHM, 3VL6HB Pasturella, Haemophilus, 7 Way, foot rot shot, pink eye shot, Anthrax, Preguard 10, Microplasma, and have been poured with Pro-B injectable and Dectomax. The bulls should be ready to go right your cows and go to work. We can take your bulls home with us and keep free of charge until May 1, 2017.

Due to the young age of the bulls, and the chance of injury or death we will semen test the bulls in April. The last several years every bull we brought home, that sold on the sale, tested extremely well and pass their test in April. We also give first season breeding guarantee, and try to keep replacement or a loner bull on hand for you to finish out the breeding season.

The bred heifers have been ultrasounded, calf sexed, both scour shots, dewormed, Anthrax shots, re-preg checked and Bangs verified. All heifers have tested NEGATIVE for BVD. It saves a lot when you can heifers grouped into a short calving period, all the work done in a short amount of time, just in time for spring turn out.

Notice in the records, the low birth weight EPDS across the board on the bulls; and the spread between birth to wean to yearling & high \$ beef.

## CONTACTS

Darrell & Fran.....	605-842-3749 (H)	605-840-1290 (C)	
Audie & Holly.....	605-842-0260 (H)	605-842-5415 (C)	
Monty.....	605-840-8858 (C)		
Joel & Vicki.....	605-473-1888 (H)		
Shay & Kaylea.....	605-208-1177 (C)	605-842-5195 (C)	

## ADVERTISING REPRESENTATIVES & RINGMEN

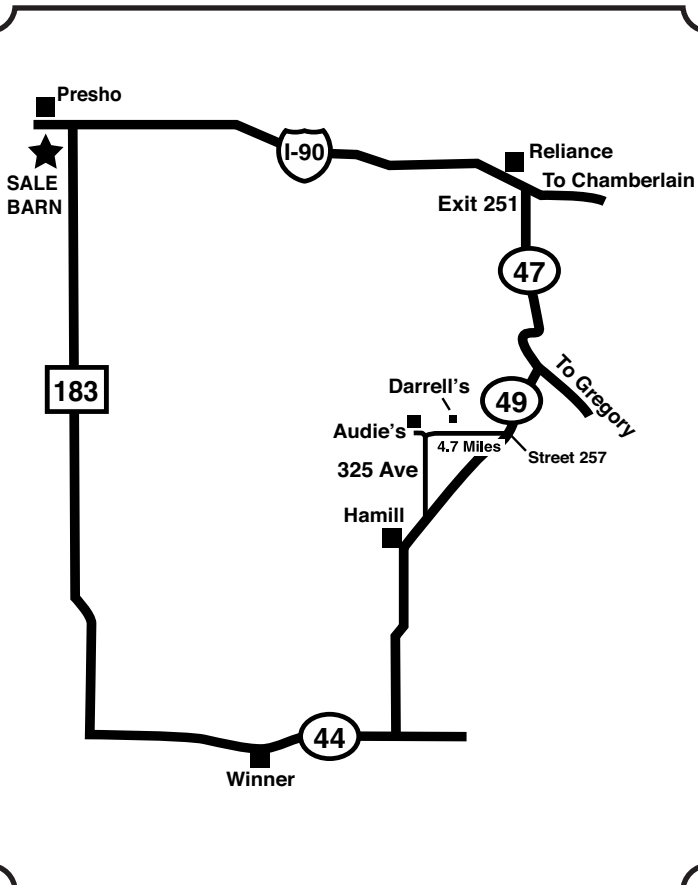
Dan Clark – Auctioneer – cell 605-842-6075  
 Joseph Kvigne – Sales & Genetic Consultant – 605-670-1785  
 Jim Scheel – Cattle Business Weekly – 605-545-1521

Dan Piroutek – Tri State – 605-544-3316  
 Curt Littau – 605-840-0978

One thing we all must always remember is that with all the technological advances that come along and all the fads and trends – a cow still has to have the basic phenotype traits to be able to travel the country – be bred on time – and still wean off a calf that is large without it all being fed on to it.

*So come join us for the day and we maybe able to design a program together that will enhance your operation!*

**FOR MORE PICTURES VIDEOS AND HERD SIRES GO TO OUR WEBSITE AT [WWW.LARSONRANCHLLC.COM](http://WWW.LARSONRANCHLLC.COM) AND ALSO [DVAUCTION.COM](http://DVAUCTION.COM)**



## — VOLUME DISCOUNT —

*A volume discount of 5% will be given on the purchase of 5 to 9 bulls bringing over \$4,500 each. (not averaging \$4,500)*

*A volume discount of 10% will be given on 10 bulls or more bringing over \$4,500 each. Bulls bringing under \$4,500 will not be discounted. —  
 But used towards volume head count.*



## ATTENTION:

This year every bull that sells for \$3,500 or more will be guaranteed until Sept. 1st, 2017, against breeding injuries. The Larsons will guarantee the bulls to be breeders and to pass a breeding soundness and fertility exam. (Penile Hematoma; Preputial Tear; Testiclitities) If your bull is unusable we will credit you the difference between your purchase price and the salvage value of your bull on a bull on the 2018 sale. This way he will be covered for 100% value. We will also try to have a loaner bull available for you to use the balance of the 2017 breeding season, (until Sept. 1st 2016) at which time you can return the loaned bull to the Larson's. The bulls are not covered for abuse, neglect or lack of care. Any bull that brings \$3,499 or less will be guaranteed at 1/2 credit towards 2018's sale using the difference between purchase price and salvage value. We will try and have a loaner bull available for your use until Sept. 1st 2017, at which time the bull can be returned to the Larson's (or we may have the opportunity for you the day of the sale so you may insure your bull yourself that day).

### Breeding Soundness Exam

Two-year old bulls have passed a breeding soundness exam by the Animal Clinic, Ltd of Winner, SD. The yearling bulls have not yet been tested. The yearling bulls were scrotal measured and adjusted to a 365 day measurement.

### Herd Health

The Larson bulls and heifers are on an excellent herd health program designed to provide optimal health and reproductive efficiency. Throughout their production cycles they have been given numerous vaccines to ensure their ability to perform at the highest level. These include IBR-PI3-BVD-BRSV, Histophilus, Mannheimia Haemolytica, Pasteurella Multocida, Mycoplasma, 7 way, Pinkeye-implants and Anthrax. In addition they have been given Dectomax injectable and an Ivermectin pour on. They have all been ear notch tested negative to PI BVD. The bulls have all had a Virashield 6VL5HB vibrio leptos and Fusoguard foot rot vaccine. The heifers have been Brucellosis vaccinated, pelvic measured, given Vista 3VL5 pre-breeding, as well as Scour Bos 9 and boosted with Scour Bos 4 pre-calving. All heifers' pregnancies have been ultra sounded for age and if old enough the sex of the embryo determined. The Larson cattle have many years of outstanding success and are ready to go into any herd and get right to work.

Animal Clinic, LTD., Winner, SD

Dr. John Voegeli, Dr. J. Eric Heath, Dr. C.A. Owen, Dr. Tom Covey

All bulls were weaned in September 15 & 18. They were on a growing ration of ground hay, silage, free choice loose hay, 5 pounds of distillers, minerals and vitamins (A 49 mega cal ration).

We put the bulls on a 122-day test and 125 day test, starting the day they were weaned. This test is to compare the bulls to one another, not to see how fast they will gain. We try to grow them with good muscle; not burn them out with a hot ration of grain.

We believe we brought to town an even, excellent, thick, super fancy and showy set of bulls that will work in anybody's herd with fantastic pedigrees and proven genetics behind these bulls.

We once again ultra-sounded the bulls this year for carcass data. We feel Carcass Data is also a very important part of the overall appraisal of a bull.

### Registration Papers

Papers will be mailed on registered cattle upon request of buyer unless otherwise announced. Please leave information with the clerk at settlement. We will sign and mail papers to purchaser who can send them in to be transferred.

### Performance Records

Performance records are included for your information and guidance in selection. We consider them important but not absolute.

We have tried to provide in these records enough information to help you in selecting a bull which will best fit your needs.

### Terms and Conditions

Terms of the sale are cash. Each animal will be sold to the highest bidder. Bidding disputes will be settled by the auctioneer, whose decision will be final. All cattle will be at the purchaser's risk as soon as sold, but will be cared for the best possible. **(All remarks sale day take precedence over catalog.)**

### Accidents and Liabilities

All persons attend the sale at their own risk. The sellers and sales management assume no liability, legal or otherwise, for any accidents occurring in, on or about the premises.







# 45 — REGISTERED ANGUS BULLS — LOTS 1-44

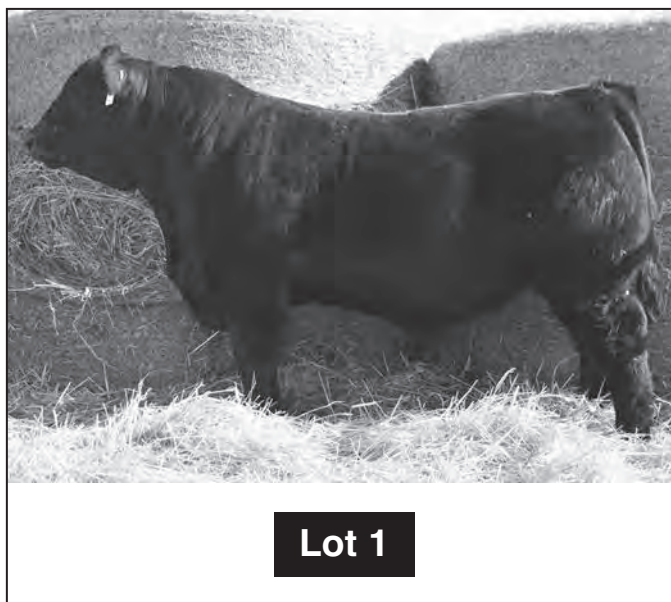
**Marbling** is measured as percent fat. Beef carcasses are traded on the amount of intermuscular fat (marbling) they contain between the 12th & 13th ribs. Real time ultrasound has the capability to predict the actual percent of marbling in the ribeye. Bulls have 2.5 percent less intermuscular fat (marbling) than their calves (progeny) will have, so add 2.5% to each bulls IMF (marbling) rate to know how his progeny will grade.

**Back Fat** is measured between the 12th & 13th rib, and can be measured by ultrasound.  
AVERAGE BF = .50 in. RANGE = .20-.80 in.

**Ribeye Area** is the amount of muscle in a carcass where the high cuts of meat comes from.  
AVERAGE AREA = 1.1 sq. inch per 100 lb. liveweight RANGE = 9-15 sq. inches

All of these records are provided s tools and aids in selecting a bull. But never select breeding stock just on records, but also on eye appeal, structural correctness, herd longevity of the sires and dams, fertility and herd history.

<b>1</b>	<b>AAA18683062</b>	<b>46AKC0627</b>
	<b>TATTOO</b> F1491	<b>COWS AGE</b> 5
<b>Registered Polled</b>	Werner War Party 2417(AAA16004857) RB Tour Of Duty 177 (AAA 16984170) BA Lady 6807-305 (AAA15679812)	
	Brookdale Dateline 355(AAA15795216) Brookdale Jodi 491 (AAA 17158077) Brookdale Jodi 398(AAA16125507)	
BD.. <b>4/13/16</b>	The top performance Angus bull - tremendous bone, muscle, length - from a cow family that excels in performance, fertility, and longevity, top it off with a big pelvic- we like this bull a lot.	
BW..... <b>92</b>	125 Day ADG ..... <b>3.89</b> 365 REA ..... <b>16.9</b>	
BW..... <b>+2.2</b>	205 ADJ ..... <b>1027</b> % IM Fat ..... <b>4.81</b>	
WW ..... <b>+60</b>	365 ADJ ..... <b>1588</b> Rib Fat ..... <b>0.23</b>	
YW ..... <b>+105</b>	WDA ..... <b>4.35</b> 365 ADJ SCR..... <b>36</b>	
Milk..... <b>+26</b>	365 PLV. <b>182</b>	
	\$B... <b>134.16</b>	



<b>2</b>	<b>AAA18683109</b>	<b>46AKC0606</b>
	<b>TATTOO</b> F349	<b>COWS AGE</b> 7
<b>Registered Polled</b>	Werner War Party 2417(AAA16004857) RB Tour Of Duty 177 (AAA 16984170) BA Lady 6807-305 (AAA15679812)	
	ALC Telstar P25T (AAA15904548) Brookdale Miss Wix 349 (AAA16600402) Brookdale Miss Wix 626 (AAA15612575)	
BD. <b>4/04/16</b>	A long bodied bull that should sire outstanding feeder cattle - cow family excels at udder quality to add value to replacement females as well.	
BW..... <b>74</b>	125 Day ADG ..... <b>3.82</b> 365 REA ..... <b>14.0</b>	
BW..... <b>+0.9</b>	205 ADJ ..... <b>801</b> % IM Fat ..... <b>8.31</b>	
WW ..... <b>+50</b>	365 ADJ ..... <b>1421</b> Rib Fat ..... <b>0.54</b>	
YW ..... <b>+91</b>	WDA ..... <b>3.74</b> 365 ADJ SCR..... <b>37</b>	
Milk..... <b>+26</b>	365 PLV. <b>179</b>	
	\$B... <b>118.65</b>	

<b>3</b>	<b>AAA18696365</b>	<b>46AKC0653</b>
	<b>TATTOO</b> F0171X	<b>COWS AGE</b> 6
<b>Registered Polled</b>	Werner War Party 2417(AAA16004857) RB Tour Of Duty 177 (AAA 16984170) BA Lady 6807-305 (AAA15679812)	
	SAV Providence6922 (AAA15707145) DGL Providencial Boom 0171X (AAA18052365) DGL Miss Kaboom 3171(AAA18051157)	
BD. <b>4/15/16</b>	Another high dollar beef bull with high EPD yearling weight.	
BW..... <b>88</b>	125 Day ADG ..... <b>3.82</b> 365 REA ..... <b>13.8</b>	
BW..... <b>+2.6</b>	205 ADJ ..... <b>775</b> % IM Fat ..... <b>4.62</b>	
WW ..... <b>+60</b>	365 ADJ ..... <b>1405</b> Rib Fat ..... <b>0.44</b>	
YW ..... <b>+104</b>	WDA ..... <b>3.75</b> 365 ADJ SCR..... <b>36</b>	
Milk..... <b>+25</b>	365 PLV. <b>157</b>	
	\$B... <b>139.44</b>	



# 45 — REGISTERED ANGUS BULLS — LOTS 1-44

4	PENDING		46AKC0604
	TATTOO F8Y3	COWS AGE 5	TAG COLOR Black
<b>Registered Polled</b>	Werner War Party 2417(AAA16004857) RB Tour Of Duty 177 (AAA 16984170) BA Lady 6807-305 (AAA15679812)		
	Sitz Upward 307R (AAA14963730) DGL Precision Up SS Traveler 6807-T510		
A large scrotal bull going back to the combination of Tour Of Duty and the great producing Upward bull.			
BD. <b>4/18/16</b>			
BW..... <b>94</b>			
BW..... <b>+</b>			
WW..... <b>+</b>			
YW..... <b>+</b>			
Milk..... <b>+</b>			
365 PLV. <b>173</b>	125 Day ADG ..... <b>3.96</b>	365 REA ..... <b>13.6</b>	
\$B.....	205 ADJ..... <b>767</b>	% IM Fat ..... <b>4.97</b>	
	365 ADJ ..... <b>1457</b>	Rib Fat ..... <b>0.29</b>	
	WDA..... <b>3.84</b>	365 ADJ SCR..... <b>40</b>	

5	AAA18696452		46AKC0675
	TATTOO F9131	COWS AGE 7	TAG COLOR Green & White
<b>Registered Polled</b>	Werner War Party 2417(AAA16004857) RB Tour Of Duty 177 (AAA 16984170) BA Lady 6807-305 (AAA15679812)		
	Nichols Extra K205 (AAA13752642) AML Miss Extra Rain 9131 (AAA18051154) Oaknoll Lady A131(AAA13917292)		
High dollar beef, great milk bull, that goes back to a cow family with tremendous longevity and fertility.			
BD. <b>4/18/16</b>			
BW..... <b>90</b>			
BW..... <b>+1.7</b>			
WW..... <b>+54</b>			
YW..... <b>+100</b>			
Milk..... <b>+26</b>			
365 PLV. <b>153</b>	125 Day ADG ..... <b>3.44</b>	365 REA ..... <b>13.0</b>	
\$B... <b>134.60</b>	205 ADJ..... <b>761</b>	% IM Fat ..... <b>4.56</b>	
	365 ADJ ..... <b>1396</b>	Rib Fat ..... <b>0.49</b>	
	WDA..... <b>3.58</b>	365 ADJ SCR ..... <b>36.5</b>	

6	PENDING		46AKC0605
	TATTOO F083	COWS AGE 6	TAG COLOR Black
<b>Registered Polled</b>	Werner War Party 2417(AAA16004857) RB Tour Of Duty 177 (AAA 16984170) BA Lady 6807-305 (AAA15679812)		
	HARB Pendleton 765 JH(AAA1531340) DGL Traveling Pendleton 083		
A moderate framed Tour of Duty son --- very correct structured bull, moves out freely.			
BD. <b>4/09/16</b>			
BW..... <b>91</b>			
BW..... <b>+</b>			
WW..... <b>+</b>			
YW..... <b>+</b>			
Milk..... <b>+</b>			
365 PLV. <b>172</b>	125 Day ADG ..... <b>3.36</b>	365 REA ..... <b>14.1</b>	
\$B.....	205 ADJ..... <b>742</b>	% IM Fat ..... <b>5.19</b>	
	365 ADJ ..... <b>1338</b>	Rib Fat ..... <b>0.29</b>	
	WDA..... <b>3.58</b>	365 ADJ SCR ..... <b>36</b>	

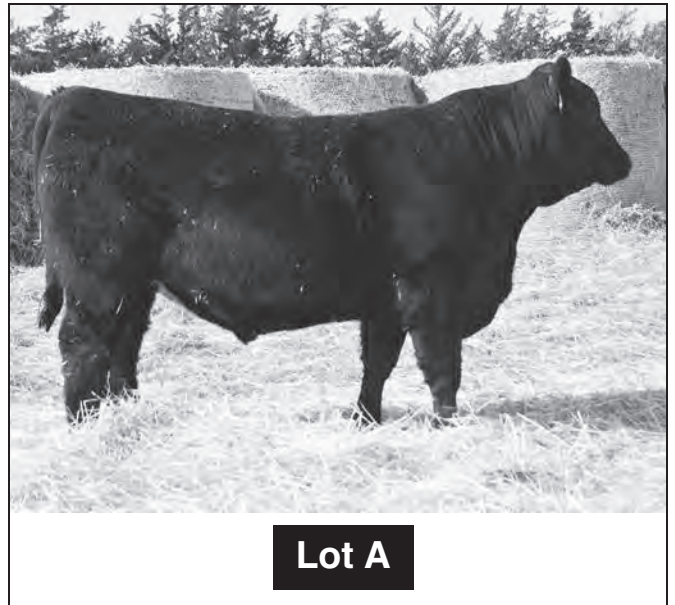
7	AAA18702947		46AKC0608
	TATTOO F313Z	COWS AGE 4	TAG COLOR Black
<b>Registered Polled</b>	Werner War Party 2417(AAA16004857) RB Tour Of Duty 177 (AAA 16984170) BA Lady 6807-305 (AAA15679812)		
	SAV Final Answer 0035 (AAA13592905) DGL-Final Rain 313Z (AAA18683113) Brookdale Queen 313 (AAA14586931)		
A stacked pedigree combing Tour Of Duty, Upward, Pendleton with keeping birth weight EPD down to moderate the great cow family.			
BD. <b>4/02/16</b>			
BW..... <b>90</b>			
BW..... <b>2</b>			
WW..... <b>54</b>			
YW..... <b>98</b>			
Milk..... <b>26</b>			
365 PLV. <b>170</b>	125 Day ADG ..... <b>3.32</b>	365 REA ..... <b>15.4</b>	
\$B... <b>108.71</b>	205 ADJ..... <b>719</b>	% IM Fat ..... <b>3.17</b>	
	365 ADJ ..... <b>1274</b>	Rib Fat ..... <b>0.25</b>	
	WDA..... <b>3.50</b>	365 ADJ SCR ..... <b>39</b>	

8	PENDING		46AKC0660
	TATTOO F8111	COWS AGE 8	TAG COLOR Black
<b>Registered Polled</b>	Werner War Party 2417(AAA16004857) RB Tour Of Duty 177 (AAA 16984170) BA Lady 6807-305 (AAA15679812)		
	Dateline 149 (AAA13971058) DGL-Flying Date 8111 Equalized Flyer 4111		
Combination of new genetics with older proven genetics, to make a complete package for you.			
BD. <b>4/16/16</b>			
BW..... <b>92</b>			
BW..... <b>+</b>			
WW..... <b>+</b>			
YW..... <b>+</b>			
Milk..... <b>+</b>			
365 PLV. <b>164</b>	125 Day ADG ..... <b>3.36</b>	365 REA ..... <b>12.5</b>	
\$B.....	205 ADJ..... <b>669</b>	% IM Fat ..... <b>4.76</b>	
	365 ADJ ..... <b>1262</b>	Rib Fat ..... <b>0.27</b>	
	WDA..... <b>3.39</b>	365 ADJ SCR ..... <b>33.5</b>	

9	PENDING		46AKC0602
	TATTOO FC83W	COWS AGE 2	TAG COLOR Black
<b>Registered Polled</b>	Werner War Party 2417(AAA16004857) RB Tour Of Duty 177 (AAA 16984170) BA Lady 6807-305 (AAA15679812)		
	Sitz Upward 307R (AAA14963730) DGL Pending Up C83W DGL-Pend Traveler W83W		
What an opportunity, put lots 4, 6 & 9 together. Same cow family & same sire group. This is a complete set of bulls for your pasture of cows.			
BD. <b>3/28/16</b>			
BW..... <b>84</b>			
BW..... <b>+</b>			
WW..... <b>+</b>			
YW..... <b>+</b>			
Milk..... <b>+</b>			
365 PLV. <b>170</b>	125 Day ADG ..... <b>3.92</b>	365 REA ..... <b>13.4</b>	
\$B.....	205 ADJ..... <b>651</b>	% IM Fat ..... <b>4.84</b>	
	365 ADJ ..... <b>1346</b>	Rib Fat ..... <b>0.23</b>	
	WDA..... <b>3.46</b>	365 ADJ SCR ..... <b>36</b>	

# 45 — REGISTERED ANGUS BULLS — LOTS 1-44

<b>A</b>	<b>AAA18703560</b>	<b>46AKC0621</b>
	TATTOO      COWS AGE <b>F892            8</b>	TAG COLOR <b>Black</b>
<b>Pedigreed Polled</b>  BD <b>4/16/16</b> BW..... <b>95</b>  BW ..... <b>0.3</b> WW..... <b>56</b> YW..... <b>108</b> Milk..... <b>22</b>  365 PLV <b>178</b> \$B... <b>122.09</b>	SAV Iron Mountain 8066(AAA16115617) <b>SAV Hot Iron 0941 (AAA16931321)</b> Champion Hill Georgina (AAA15734226)  Sitz Upward 307R (AAA14963730) <b>DGL Quant Up-892 (AAA18697593)</b> Brookdale Beauty 392 (AAA14300157)  Huge weaning weight Hot Iron son. Big scrotal bull that has a fantastic WDA and big yearling weight. This guy is the complete package. Raised bulls or heifers or feeder calves deluxe with this guy. A clean made performance bull.  125 Day ADG ..... <b>3.20</b> 365 REA ..... <b>13.0</b> 205 ADJ..... <b>962</b> % IM Fat ..... <b>5.14</b> 365 ADJ..... <b>1447</b> Rib Fat ..... <b>0.34</b> WDA..... <b>4.13</b> 365 ADJ SCR ..... <b>41</b>	



<b>10</b>	<b>AAA18702937</b>	<b>46AKC0658</b>
	TATTOO      COWS AGE <b>FP15            12</b>	TAG COLOR <b>Green &amp; White</b>
<b>Registered Polled</b>  BD.. <b>4/04/16</b> BW..... <b>80</b>  BW ..... <b>2.1</b> WW..... <b>58</b> YW..... <b>102</b> Milk..... <b>20</b>  365 PLV <b>168</b> \$B... <b>108.70</b>	SAV Iron Mountain 8066(AAA16115617) <b>SAV Hot Iron 0941 (AAA16931321)</b> Champion Hill Georgina(AAA15734226)  Kruggerand 410H(AAA13498476) <b>AML Nichols EXT P15 (AAA18696453)</b>  Here you go! Get in on the new Hot Iron genetics. Big numbers to sell those huge calves off your cows. Big, deep, fat cattle; yearling weights, high gain, high WDA, and can cover a lot of cows with a scrotal like this.  125 Day ADG ..... <b>4.40</b> 365 REA ..... <b>15.8</b> 205 ADJ..... <b>888</b> % IM Fat ..... <b>4.49</b> 365 ADJ..... <b>1588</b> Rib Fat ..... <b>0.53</b> WDA..... <b>4.34</b> 365 ADJ SCR ..... <b>38</b>	

<b>11</b>	<b>PENDING</b>	<b>46AKC0635</b>
	TATTOO      COWS AGE <b>F83            8</b>	TAG COLOR <b>Orange &amp; Black</b>
<b>Registered Polled</b>  BD. <b>3/28/16</b> BW..... <b>93</b>  BW ..... <b>+</b> WW ..... <b>+</b> YW ..... <b>+</b> Milk ..... <b>+</b>  365 PLV <b>160</b> \$B.....	SAV Iron Mountain 8066(AAA16115617) <b>SAV Hot Iron 0941 (AAA16931321)</b> Champion Hill Georgina(AAA15734226)  Conneally Freightliner(AAA1326916) <b>DM Freight Date 83</b> DM Date Fame 6105  Want to wean off a set of heavy calves? Put lots 10, 11, 12, 13 & 14 together and be amazed how the scales will tip in your favor. Great gain ability and weight per day of age. Phenomenal gain from birth to yearling.  125 Day ADG ..... <b>4.36</b> 365 REA ..... <b>12.2</b> 205 ADJ..... <b>856</b> % IM Fat ..... <b>5.49</b> 365 ADJ..... <b>1504</b> Rib Fat ..... <b>0.39</b> WDA..... <b>4.02</b> 365 ADJ SCR ..... <b>35.5</b>	

<b>12</b>	<b>AAA18696441</b>	<b>46AKC0642</b>
	TATTOO      COWS AGE <b>FX233            6</b>	TAG COLOR <b>Green</b>
<b>Registered Polled</b>  BD. <b>3/28/16</b> BW..... <b>93</b>  BW ..... <b>+2.1</b> WW ..... <b>+59</b> YW ..... <b>+100</b> Milk..... <b>+21</b>  365 PLV <b>179</b> \$B... <b>119.80</b>	SAV Iron Mountain 8066(AAA16115617) <b>SAV Hot Iron 0941 (AAA16931321)</b> Champion Hill Georgina(AAA15734226)  SAV Bismarck5682(AAA15109865) <b>AL Super Bismark X233 (AAA18051205)</b> Brookdale Daisey 233(AAA14593464)  A super female producer; big pelvic, great cow family, combined with a great 205 weight.  125 Day ADG ..... <b>3.60</b> 365 REA ..... <b>15.0</b> 205 ADJ..... <b>819</b> % IM Fat ..... <b>4.36</b> 365 ADJ..... <b>1347</b> Rib Fat ..... <b>0.34</b> WDA..... <b>3.57</b> 365 ADJ SCR ..... <b>38</b>	

<b>13</b>	<b>PENDING</b>	<b>46AKC0622</b>
	TATTOO      COWS AGE <b>FZ622            4</b>	TAG COLOR <b>Green</b>
<b>Registered Polled</b>  BD. <b>4/21/16</b> BW..... <b>90</b>  BW ..... <b>+</b> WW ..... <b>+</b> YW ..... <b>+</b> Milk ..... <b>+</b>  365 PLV <b>155</b> \$B.....	SAV Iron Mountain 8066(AAA16115617) <b>SAV Hot Iron 0941 (AAA16931321)</b> Champion Hill Georgina(AAA15734226)  Sitz Upward 307R (AAA14963730) <b>AL Morning Up Z622</b>  A pedigree stacked for growth, deep thickness and he marbles, prime on top of it all.  125 Day ADG ..... <b>3.69</b> 365 REA ..... <b>11.8</b> 205 ADJ..... <b>787</b> % IM Fat ..... <b>8.17</b> 365 ADJ..... <b>1405</b> Rib Fat ..... <b>0.44</b> WDA..... <b>3.83</b> 365 ADJ SCR ..... <b>41</b>	



# 45 — REGISTERED ANGUS BULLS — LOTS 1-44

<b>14</b>	<b>AAA18696445</b>	<b>46AKC0610</b>
	TATTOO <b>F2463</b>	COWS AGE <b>4</b>

**Registered Polled**

SAV Iron Mountain 8066(AAA16115617)  
**SAV Hot Iron 0941 (AAA16931321)**  
 Champion Hill Georgina(AAA15734226)

HF Tiger 5T (AAA16526314)  
**ML Tiger Traveler 2463 (AAA18383282)**  
 ML Traveler Forever 6463(AAA18374131)

Another great numbered bull, out of a consistently great cow family.

125 Day ADG..... <b>3.75</b>	365 REA..... <b>13.3</b>
205 ADJ..... <b>769</b>	% IM Fat..... <b>5.72</b>
365 ADJ..... <b>1382</b>	Rib Fat..... <b>0.31</b>
WDA..... <b>3.75</b>	365 ADJ SCR..... <b>36</b>

BD...**4/11/16**  
 BW.....**90**  
 BW.....**+1.6**  
 WW.....**+58**  
 YW.....**+103**  
 Milk.....**+24**

365 PLV **166**  
 \$B...**125.92**



<b>15</b>	<b>AAA18703558</b>	<b>46AKC0636</b>
	TATTOO <b>FT204</b>	COWS AGE <b>9</b>

**Registered Polled**

SAV Iron Mountain 8066(AAA16115617)  
**SAV Hot Iron 0941 (AAA16931321)**  
 Champion Hill Georgina(AAA15734226)

S A V 8180 Traveler 004 (AAA13512009)  
**T2-Lady Traveler -T204 (AAA18697579)**  
 Lady Raven U204 (AAA13225921)

A Super high marbling bull, natural growth and thickness, large scrotal bull. Mother struck by lightning in July. Stayed in the pasture

125 Day ADG..... <b>3.92</b>	365 REA..... <b>11.1</b>
205 ADJ..... <b>689</b>	% IM Fat..... <b>8.14</b>
365 ADJ..... <b>1368</b>	Rib Fat..... <b>0.29</b>
WDA..... <b>3.60</b>	365 ADJ SCR..... <b>40</b>

BD...**4/11/16**  
 BW.....**90**  
 BW.....**+1.0**  
 WW.....**+62**  
 YW.....**+115**  
 Milk.....**+24**

365 PLV **158**  
 \$B...**137.46**

<b>16</b>	<b>AAA18702939</b>	<b>46AKC0615</b>
	TATTOO <b>FT31</b>	COWS AGE <b>9</b>

**Registered Polled**

SAV Iron Mountain 8066(AAA16115617)  
**SAV Hot Iron 0941 (AAA16931321)**  
 Champion Hill Georgina (AAA15734226)

TC Gridiron 258 (AAA14237017)  
**ML Jack Iron T31 (AAA18696446)**  
 Brookdale Eisa 31(AAA14586914)

A wide based, very correct bull with a lot of muscle - should produce females with good longevity - produced by a 9 year old cow.

125 Day ADG..... <b>3.36</b>	365 REA..... <b>11.4</b>
205 ADJ..... <b>668</b>	% IM Fat..... <b>3.47</b>
365 ADJ..... <b>1323</b>	Rib Fat..... <b>0.25</b>
WDA..... <b>3.38</b>	365 ADJ SCR..... <b>36</b>

BD...**4/9/16**  
 BW.....**94**  
 BW.....**2.6**  
 WW.....**62**  
 YW.....**106**  
 Milk.....**20**

365 PLV **178**  
 \$B...**117.95**

<b>17</b>	<b>PENDING</b>	<b>46AKC0633</b>
	TATTOO <b>F945</b>	COWS AGE <b>7</b>

**Registered Polled**

Rito707Of Ideal 3407-7075(AAA13066860)  
**S A V Resource 1441(AAA18696446)**  
 SAV Blackcap May 4136(AAA14739095)

S A V Bismarck 5682 (AAA15109865)  
**VJS FreightBando 945**  
 Raven Nettie Z5(AAA14286137)

A well-made thick resource son - mother is a very attractive and productive Bismark daughter.

125 Day ADG..... <b>4.20</b>	365 REA..... <b>15.2</b>
205 ADJ..... <b>783</b>	% IM Fat..... <b>5.53</b>
365 ADJ..... <b>1497</b>	Rib Fat..... <b>0.34</b>
WDA..... <b>4.04</b>	365 ADJ SCR..... <b>37</b>

BD...**3/3/16**  
 BW.....**88**  
 BW.....**+**  
 WW.....**+**  
 YW.....**+**  
 Milk.....**+**

365 PLV **174**  
 \$B.....

<b>18</b>	<b>PENDING</b>	<b>46AKC0652</b>
	TATTOO <b>F45</b>	COWS AGE <b>12</b>

**Registered Polled**

Rito707Of Ideal 3407-7075(AAA13066860)  
**S A V Resource 1441(AAA18696446)**  
 SAV Blackcap May 4136(AAA14739095)

Connealy Freightliner (AAA13026916)  
**VJS FreightRoyce 45**  
 Rolls Royce 131

A good bull...a Resource son with a little more frame and a big scrotal.

125 Day ADG..... <b>4.12</b>	365 REA..... <b>14.9</b>
205 ADJ..... <b>746</b>	% IM Fat..... <b>4.04</b>
365 ADJ..... <b>1419</b>	Rib Fat..... <b>0.27</b>
WDA..... <b>3.82</b>	365 ADJ SCR..... <b>39.5</b>

BD...**4/6/16**  
 BW.....**92**  
 BW.....**+**  
 WW.....**+**  
 YW.....**+**  
 Milk.....**+**

365 PLV **169**  
 \$B.....

# 45 — REGISTERED ANGUS BULLS — LOTS 1-44

<b>19</b>	<b>PENDING</b>	<b>46AKC0641</b>
	<b>TATTOO</b> F283	<b>COWS AGE</b> 4

**Registered Polled**

H A Image Maker 0415 (AAA13739532)  
**Benfield Substance 8506 (AAA16207085)**  
 Benfield Edella 1105 (AAA14177734)

SAV Bismarck 5682 (AAA15109865)  
**DM Datemark 283**  
 DM Date Freight-83

Substance, Bismark, Freightliner, and Dateline; years of breeding put together to make a true female producer.

125 Day ADG.....	<b>3.28</b>	365 REA .....	<b>13.3</b>
205 ADJ.....	<b>720</b>	% IM Fat .....	<b>5.22</b>
365 ADJ.....	<b>1258</b>	Rib Fat .....	<b>0.25</b>
WDA.....	<b>3.48</b>	365 ADJ SCR .....	<b>37</b>

BD... **4/8/16**  
 BW.....**84**

BW.....**+**  
 WW.....**+**  
 YW.....**+**  
 Milk.....**+**

365 PLV. **180**  
 \$B.....

<b>20</b>	<b>AAA18702773</b>	<b>46AKC0651</b>
	<b>TATTOO</b> FW240	<b>COWS AGE</b> 7

**Registered Polled**

Connealy Onward (AAA14216491)  
**Sitz Upward 307R (AAA14963730)**  
 Sitz Henrietta Pride 81 M(AAA14087650)

HARBPendleton 765 JH (AAA15313140)  
**AML Fortune Pendleton W240 (AAA18696451)**

A direct son of the great Sitz Upward - this bull has the genetics to produce heavy feeder calves as well as outstanding females.

125 Day ADG.....	<b>4.08</b>	365 REA .....	<b>14.6</b>
205 ADJ.....	<b>770</b>	% IM Fat .....	<b>5.54</b>
365 ADJ.....	<b>1478</b>	Rib Fat .....	<b>0.34</b>
WDA.....	<b>4.02</b>	365 ADJ SCR .....	<b>35</b>

BD. **4/26/16**  
 BW.....**87**

BW.....**2.4**  
 WW.....**56**  
 YW.....**101**  
 Milk.....**30**

365 PLV. **176**  
 \$B... **118.64**

<b>21</b>	<b>AAA18696448</b>	<b>46AKC0674</b>
	<b>TATTOO</b> F863	<b>COWS AGE</b> 13

**Registered Polled**

Baldrige Kaboom K243 KCF (AAA13987017)  
**Connealy Thunder (AAA15148659)**  
 Parka of Conga 241(AAA13948273)

Red Barn Fame 848 (AAA13602804)  
**Brookdale Beauty 863 (AAA14586908)**  
 Beauty 023 (AAA13655303)

If you want longevity, check this guy out. Momma is still producing at 14 years old this spring.

125 Day ADG.....	<b>3.84</b>	365 REA .....	<b>14.3</b>
205 ADJ.....	<b>747</b>	% IM Fat .....	<b>5.13</b>
365 ADJ.....	<b>1404</b>	Rib Fat .....	<b>0.38</b>
WDA.....	<b>3.78</b>	365 ADJ SCR .....	<b>38</b>

BD.. **4/4/16**  
 BW.....**64**

BW.....**+0.1**  
 WW.....**+36**  
 YW.....**+69**  
 Milk.....**+26**

365 PLV. **166**  
 \$B.....**69.37**

<b>22</b>	<b>AAA18705530</b>	<b>46AKC0647</b>
	<b>TATTOO</b> F231	<b>COWS AGE</b> 4

**Registered Polled**

RA Lincoln W144 (AAA16048473)  
**S Titlest 1145 (AAA17007985)**  
 S Cora 572 (AAA155980734)

Really Windy 1205(AAA15776681)  
**ML Windy Jack 231 (AAA18052422)**  
 Brookdale Eisa 31 (AAA14586914)

This is a sleep all night heifer bull with growth. Titlest is a complete outcross for our repeat customers.

125 Day ADG.....	<b>3.64</b>	365 REA .....	<b>15.2</b>
205 ADJ.....	<b>851</b>	% IM Fat .....	<b>5.55</b>
365 ADJ.....	<b>1409</b>	Rib Fat .....	<b>0.20</b>
WDA.....	<b>3.82</b>	365 ADJ SCR .....	<b>36</b>

BD.. **4/14/16**  
 BW.....**75**

BW.....**-0.5**  
 WW.....**+47**  
 YW.....**+81**  
 Milk.....**+24**

365 PLV. **159**  
 \$B... **102.26**



**Lot 22** Reserve Champion. Angus Bull. WJLS



# 45 — REGISTERED ANGUS BULLS — LOTS 1-44

<b>23</b>	<b>PENDING</b>	<b>46AKC0656</b>	
	<b>TATTOO</b>	<b>COWS AGE</b>	<b>TAG COLOR</b>
	<b>F291</b>	<b>4</b>	<b>Blue &amp; White</b>

**Registered Polled**

RA Lincoln W144 (AAA16048473)  
**S Titlest 1145 (AAA17007985)**  
 S Cora 572 (AAA155980734)

AAR Really Windy 1205 (AAA12448729)  
**T2 Windy X2 291**  
 ML Right Wind 531 (AAA18696444)

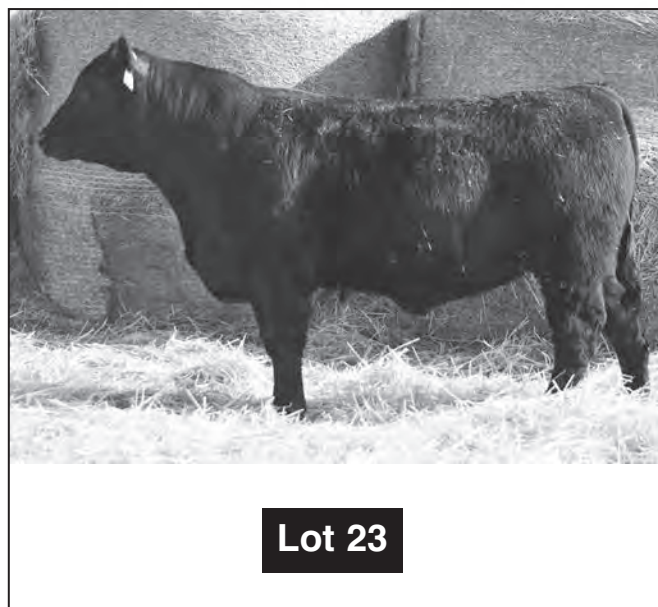
We like our Titlest calves and here is why - calving ease and growth in a very attractive package. This bull was a crowd favorite on the 2016 SD Angus tour.

125 Day ADG.....	<b>3.92</b>	365 REA .....	<b>11.8</b>
205 ADJ.....	<b>841</b>	% IM Fat .....	<b>3.15</b>
365 ADJ.....	<b>1477</b>	Rib Fat.....	<b>0.29</b>
WDA.....	<b>4.00</b>	365 ADJ SCR .....	<b>38</b>

BD.. **3/25/16**  
 BW.....**86**

BW.....**+**  
 WW.....**+**  
 YW.....**+**  
 Milk.....**+**

365 PLV. **173**  
 \$B.....



<b>24</b>	<b>AAA18705236</b>	<b>46AKC0609</b>	
	<b>TATTOO</b>	<b>COWS AGE</b>	<b>TAG COLOR</b>
	<b>F6763</b>	<b>10</b>	<b>Green</b>

**Registered Polled**

RA Lincoln W144 (AAA16048473)  
**S Titlest 1145 (AAA17007985)**  
 S Cora 572 (AAA15980734)

SAVFinalAnswer0335(AAA13592905)  
**AL Final Daigger 6763 (AAA18369317)**  
 AL Forever Daigger 6763 (AAA18369317)

Here is another good calving ease Titlest son with a large scrotal.

125 Day ADG.....	<b>3.86</b>	365 REA .....	<b>11.8</b>
205 ADJ.....	<b>849</b>	% IM Fat .....	<b>4.32</b>
365 ADJ.....	<b>1471</b>	Rib Fat.....	<b>0.32</b>
WDA.....	<b>4.09</b>	365 ADJ SCR .....	<b>40</b>

BD.. **4/21/16**  
 BW.....**74**

BW.....**-1.2**  
 WW.....**+51**  
 YW.....**+89**  
 Milk.....**+32**

365 PLV. **164**  
 \$B.....**91.35**

<b>25</b>	<b>PENDING</b>	<b>46AKC0645</b>	
	<b>TATTOO</b>	<b>COWS AGE</b>	<b>TAG COLOR</b>
	<b>F0622</b>	<b>6</b>	<b>Green</b>

**Registered Polled**

RA Lincoln W144 (AAA16048473)  
**S Titlest 1145 (AAA17007985)**  
 S Cora 572 (AAA15980734)

SAVFinalAnswer0335(AAA13592905)  
**AL Final Bruno 0622**  
 Brookdale Blkcp Empress 622

Do you want to breed a set of heifers with confidence? Grab 22, 24, 25, 26, 27 & 28...breed them alike with confidence.

125 Day ADG.....	<b>3.68</b>	365 REA .....	<b>17.2</b>
205 ADJ.....	<b>819</b>	% IM Fat .....	<b>4.61</b>
365 ADJ.....	<b>1418</b>	Rib Fat.....	<b>0.38</b>
WDA.....	<b>3.95</b>	365 ADJ SCR .....	<b>39</b>

BD.. **4/18/16**  
 BW.....**74**

BW.....**+**  
 WW.....**+**  
 YW.....**+**  
 Milk.....**+**

365 PLV. **178**  
 \$B.....

<b>26</b>	<b>AAA18705533</b>	<b>46AKC0659</b>	
	<b>TATTOO</b>	<b>COWS AGE</b>	<b>TAG COLOR</b>
	<b>F209</b>	<b>7</b>	<b>Black &amp; White</b>

**Registered Polled**

RA Lincoln W144 (AAA16048473)  
**S Titlest 1145 (AAA17007985)**  
 S Cora 572 (AAA15980734)

New Design 1407(AAA12783540)  
**Brookdale Miss Wix 209 (AAA16608337)**  
 Red Barn Miss Wix 879 (AAA13717983)

This bull is out of a great Miss Wix cow family.

125 Day ADG.....	<b>3.04</b>	365 REA .....	<b>12.3</b>
205 ADJ.....	<b>763</b>	% IM Fat.....	<b>4.6</b>
365 ADJ.....	<b>1208</b>	Rib Fat.....	<b>0.27</b>
WDA.....	<b>3.41</b>	365 ADJ SCR .....	<b>36</b>

BD.. **4/13/16**  
 BW.....**77**

BW.....**-1.5**  
 WW.....**+37**  
 YW.....**+67**  
 Milk.....**+31**

365 PLV. **166**  
 \$B.....**63.94**

<b>27</b>	<b>PENDING</b>	<b>46AKC0669</b>	
	<b>TATTOO</b>	<b>COWS AGE</b>	<b>TAG COLOR</b>
	<b>FY622</b>	<b>5</b>	<b>Green</b>

**Registered Polled**

RA Lincoln W144 (AAA16048473)  
**S Titlest 1145 (AAA17007985)**  
 S Cora 572 (AAA15980734)

TC Aberdeen 759 (AAA15840414)  
**AL Blue Dean Y622**  
 RAB-EGL Blue Moon 4407M(AAA14422326)

Here is an opportunity to combine Titlest with the great TC Aberdeen and Blue moon...female producing bloodlines.

125 Day ADG.....	<b>3.72</b>	365 REA .....	<b>14.1</b>
205 ADJ.....	<b>750</b>	% IM Fat .....	<b>6.31</b>
365 ADJ.....	<b>1287</b>	Rib Fat.....	<b>0.26</b>
WDA.....	<b>3.46</b>	365 ADJ SCR .....	<b>37</b>

BD.. **4/11/16**  
 BW.....**74**

BW.....**+**  
 WW.....**+**  
 YW.....**+**  
 Milk.....**+**

365 PLV. **164**  
 \$B.....

# 45 — REGISTERED ANGUS BULLS — LOTS 1-44

28	PENDING		46AKC0631
	TATTOO	COWS AGE	TAG COLOR
	FW63	7	Black & White
<b>Registered Polled</b>	RA Lincoln W144 (AAA16048473)		
	<b>S Titlest 1145 (AAA17007985)</b>		
	S Cora 572 (AAA15980734)		
	SAVFinalAnswer0335(AAA13592905)		
	<b>TTT Final 6807 W63</b>		
	Brookdale Elsa Pride-63		
	A very good calving ease bull --- lines up Titlest, Final Answer and 616.		
BD... <b>4/4/16</b>	125 Day ADG ..... <b>3.48</b> ...365 REA ..... <b>16.9</b>		
BW..... <b>80</b>	205 ADJ..... <b>667</b> ...% IM Fat..... <b>4.42</b>		
	365 ADJ..... <b>1242</b> ...Rib Fat..... <b>0.37</b>		
	WDA..... <b>3.41</b> ...365 ADJ SCR..... <b>35</b>		
BW..... <b>+</b>			
WW..... <b>+</b>			
YW..... <b>+</b>			
Milk..... <b>+</b>			
365 PLV. <b>164</b>			
\$B.....			

29	AAA18703554		46AKC0661
	TATTOO	COWS AGE	TAG COLOR
	FC100	2	Green & White
<b>Registered Polled</b>	A A R Really Windy 1205		
	<b>V D A R Really Windy 4097 (AAA15776681)</b>		
	VDAR Blackbird 2031		
	Sitz Upward 307R (AAA14863730)		
	<b>AML UpThon C100 (AAA18702771)</b>		
	AML-Marathon-8100 (AAA18696462)		
	Calving ease with more punch and depth.		
BD.. <b>3/31/16</b>	125 Day ADG ..... <b>3.92</b> 365 REA ..... <b>12.9</b>		
BW..... <b>74</b>	205 ADJ..... <b>695</b> % IM Fat ..... <b>3.97</b>		
	365 ADJ..... <b>1364</b> Rib Fat..... <b>0.25</b>		
	WDA..... <b>3.55</b> 365 ADJ SCR..... <b>34</b>		
BW..... <b>+</b>			
WW..... <b>+</b>			
YW..... <b>+</b>			
Milk..... <b>+</b>			
365 PLV. <b>165</b>			
\$B.....			

30	AAA18697591		46AKC0628
	TATTOO	COWS AGE	TAG COLOR
	F1171	5	Black
<b>Registered Polled</b>	Cole Creek Black Cedar 46P(AAA14496765)		
	<b>Cole Creek Cedar Ridge 1V (AAA16134394)</b>		
	Cole Creek Clovanada 49S (AAA15123755)		
	TC Aberdeen 759 (AAA15840414)		
	<b>DGL AberFreight-1171 (AAA18376568)</b>		
	DGL FreightStone 7171 (AAA18374141)		
	Excellent weaning weight on fool proof, calving ease Cedar Ridge genetics.		
BD.. <b>4/18/16</b>	125 Day ADG ..... <b>4.02</b> 365 REA ..... <b>13.4</b>		
BW..... <b>72</b>	205 ADJ..... <b>798</b> % IM Fat ..... <b>5.13</b>		
	365 ADJ..... <b>1458</b> Rib Fat..... <b>0.31</b>		
	WDA..... <b>3.97</b> 365 ADJ SCR..... <b>72</b>		
BW..... <b>-0.3</b>			
WW..... <b>+40</b>			
YW..... <b>+72</b>			
Milk..... <b>+28</b>			
365 PLV. <b>167</b>			
\$B..... <b>81.11</b>			

31	AAA18703561		46AKC0638
	TATTOO	COWS AGE	TAG COLOR
	FX68	6	White
<b>Registered Polled</b>	Cole Creek Black Cedar 46P(AAA14496765)		
	<b>Cole Creek Cedar Ridge 1V (AAA16134394)</b>		
	Cole Creek Clovanada 49S (AAA15123755)		
	SAVFinal Answer 0035(AAA13592905)		
	<b>ML-Final Freight-X68 (AAA18702753)</b>		
	ML-Freight Drive-068 (AAA18696443)		
	A sound, solid, good bull - typical of the Cedar Ridge sire group.		
BD.. <b>4/12/16</b>	125 Day ADG ..... <b>4.15</b> 365 REA ..... <b>12.8</b>		
BW..... <b>74</b>	205 ADJ..... <b>755</b> % IM Fat ..... <b>5.75</b>		
	365 ADJ..... <b>1452</b> Rib Fat..... <b>0.30</b>		
	WDA..... <b>3.96</b> 365 ADJ SCR..... <b>36</b>		
BW..... <b>+</b>			
WW..... <b>+</b>			
YW..... <b>+</b>			
Milk..... <b>+</b>			
365 PLV. <b>177</b>			
\$B.....			

32	PENDING		46AKC0654
	TATTOO	COWS AGE	TAG COLOR
	FZ83	4	Black
<b>Registered Polled</b>	Cole Creek Black Cedar 46P(AAA14496765)		
	<b>Cole Creek Cedar Ridge 1V (AAA16134394)</b>		
	Cole Creek Clovanada 49S (AAA15123755)		
	TC Aberdeen 759 (AAA15840414)		
	<b>DGL Deanton Z83</b>		
	DGL DeanTrav-083		
	This is another good Cedar Ridge son; tremendous feet and legs, built in longevity.		
BD.. <b>4/14/16</b>	125 Day ADG ..... <b>4.36</b> 365 REA ..... <b>15.8</b>		
BW..... <b>73</b>	205 ADJ..... <b>742</b> % IM Fat ..... <b>5.52</b>		
	365 ADJ..... <b>1479</b> Rib Fat..... <b>0.39</b>		
	WDA..... <b>4.02</b> 365 ADJ SCR..... <b>39</b>		
BW..... <b>+</b>			
WW..... <b>+</b>			
YW..... <b>+</b>			
Milk..... <b>+</b>			
365 PLV. <b>170</b>			
\$B.....			

33	PENDING		46AKC0623
	TATTOO	COWS AGE	TAG COLOR
	F453	2	Black
<b>Registered Polled</b>	Cole Creek Black Cedar 46P(AAA14496765)		
	<b>Cole Creek Cedar Ridge 1V (AAA16134394)</b>		
	Creek Clovanada 49S (AAA15123755)		
	Sitz Upward 307R (AAA14963730)		
	<b>DGL UpLnr 353</b>		
	DGL FRLNR-153		
	High marbling bull with super calving ease.		
BD.. <b>3/18/16</b>	125 Day ADG ..... <b>3.48</b> 365 REA ..... <b>13.1</b>		
BW..... <b>71</b>	205 ADJ..... <b>675</b> % IM Fat ..... <b>6.04</b>		
	365 ADJ..... <b>1231</b> Rib Fat..... <b>0.36</b>		
	WDA..... <b>3.42</b> 365 ADJ SCR..... <b>38</b>		
BW..... <b>+</b>			
WW..... <b>+</b>			
YW..... <b>+</b>			
Milk..... <b>+</b>			
365 PLV. <b>167</b>			
\$B.....			



# 45 — REGISTERED ANGUS BULLS — LOTS 1-44

<b>34</b>	<b>AAA18713833</b>	<b>46AKC0603</b>
	<b>TATTOO</b> F4476	<b>COWS AGE</b> 2
<b>Registered Polled</b>	Cole Creek Black Cedar 46P(AAA14496765) <b>Cole Creek Cedar Ridge 1V (AAA16134394)</b> Cole Creek Clovanada 49S (AAA15123755)	
BD. <b>3/12/16</b>	Connealy Mentor 7374 (AAA15832714)	
BW..... <b>76</b>	<b>Bullerman Forever Lady 1476</b>	
	Boyd Forever Lady (AAA15954476)	
BW..... <b>+</b>	This bull's mother is a very good Connealy Mentor first calf heifer, good calving ease bull.	
WW..... <b>+</b>		
YW..... <b>+</b>		
Milk..... <b>+</b>		
	125 Day ADG..... <b>4.12</b>	365 REA..... <b>13.4</b>
365 PLV. <b>154</b>	205 ADJ..... <b>669</b>	% IM Fat..... <b>4.95</b>
\$B.....	365 ADJ..... <b>1342</b>	Rib Fat..... <b>0.45</b>
	WDA..... <b>3.66</b>	365 ADJ SCR..... <b>38</b>

<b>35</b>	<b>AAA18702716</b>	<b>46AKC06241</b>
	<b>TATTOO</b> F4763	<b>COWS AGE</b> 2
<b>Registered Polled</b>	Cole Creek Black Cedar 46P(AAA14496765) <b>Cole Creek Cedar Ridge 1V (AAA16134394)</b> Cole Creek Clovanada 49S (AAA15123755)	
BD. <b>3/25/16</b>	SAVFinal Answer 0035(AAA13592905)	
BW..... <b>70</b>	<b>AL-Fafa Daig-4763 (AAA18696434)</b>	
	AL Daiggers Answer-B763(AAA18367354)	
BW..... <b>-1</b>	High marbling, stacked calving ease.	
WW..... <b>45</b>		
YW..... <b>80</b>		
Milk..... <b>31</b>		
	125 Day ADG..... <b>3.54</b>	365 REA..... <b>12.6</b>
365 PLV. <b>165</b>	205 ADJ..... <b>658</b>	% IM Fat..... <b>7.58</b>
\$B..... <b>80.23</b>	365 ADJ..... <b>1283</b>	Rib Fat..... <b>0.28</b>
	WDA..... <b>3.58</b>	365 ADJ SCR..... <b>36</b>

<b>36</b>	<b>PENDING</b>	<b>46AKC0670</b>
	<b>TATTOO</b> F492	<b>COWS AGE</b> 2
<b>Registered Polled</b>	Cole Creek Black Cedar 46P(AAA14496765) <b>Cole Creek Cedar Ridge 1V (AAA16134394)</b> Cole Creek Clovanada 49S (AAA15123755)	
BD. <b>3/28/16</b>	SAV FinalAnswer 0035(AAA13592905)	
BW..... <b>69</b>	<b>DGLFinalGal 092</b>	
	DGL TravQuant-792	
BW..... <b>+</b>	Out of a tremendous cow family, 4 generations still in production...consistence.	
WW..... <b>+</b>		
YW..... <b>+</b>		
Milk..... <b>+</b>		
	125 Day ADG.....3.42	365 REA.....12.3
365 PLV. <b>147</b>	205 ADJ.....601	% IM Fat.....3.78
\$B.....	365 ADJ.....1395	Rib Fat.....0.16
	WDA.....3.23	365 ADJ SCR.....36

<b>37</b>	<b>PENDING</b>	<b>46AKC0651</b>
	<b>TATTOO</b> F183	<b>COWS AGE</b> 5
<b>Registered Polled</b>	Sitz Traveler 8180 (AAA11367940) <b>S A V Final Answer 0035 (AAA13592905)</b> S A V Emulous 8145 (AAA13094078)	
BD. <b>3/28/16</b>	TC Aberdeen 759 (AAA15840414)	
BW..... <b>74</b>	<b>DMAberdeenFreight183</b>	
BW..... <b>+</b>	Big rib-eye and calving ease. You just as well sell large rib-eyed calves out of your first calf heifers, and make money right away.	
WW..... <b>+</b>		
YW..... <b>+</b>		
Milk..... <b>+</b>		
	125 Day ADG.....3.88	365 REA.....15.3
365 PLV. <b>155</b>	205 ADJ.....765	% IM Fat.....5.67
\$B.....	365 ADJ.....1407	Rib Fat.....0.32
	WDA.....3.84	365 ADJ SCR.....32

<b>38</b>	<b>AAA18702752</b>	<b>46AKC0672</b>
	<b>TATTOO</b> F491	<b>COWS AGE</b> 2
<b>Registered Polled</b>	Sitz Traveler 8180 (AAA11367940) <b>S A V Final Answer 0035 (AAA13592905)</b> S A V Emulous 8145 (AAA13094078)	
BD. <b>4/13/16</b>	SAV Resource 1441(AAA17016597)	
BW..... <b>76</b>	<b>DM New Resource 491 (AAA18696461)</b>	
	DM New Extra 191(AAA18385535)	
BW..... <b>+</b>	This makes a great combination...Resource X Final Answer. He will make great cows.	
WW..... <b>+</b>		
YW..... <b>+</b>		
Milk..... <b>+</b>		
	125 Day ADG..... <b>3.92</b>	365 REA..... <b>12.2</b>
365 PLV. <b>161</b>	205 ADJ..... <b>689</b>	% IM Fat..... <b>2.89</b>
\$B.....	365 ADJ..... <b>1351</b>	Rib Fat..... <b>0.24</b>
	WDA..... <b>3.68</b>	365 ADJ SCR..... <b>38</b>

<b>40</b>	<b>PENDING</b>	<b>46AKC0644</b>
	<b>TATTOO</b> F1763	<b>COWS AGE</b> 5
<b>Registered Polled</b>	Vision Unanimous 1418 (AAA16992096) <b>DGL-Uniward-CX73 (AAA18052354)</b> DGL-Miss Ward X73 (AAA18052290)	
BD. <b>5/08/16</b>	SAVFinalAnswer0035 (AAA13592905)	
BW..... <b>80</b>	<b>AL-Final Daig 1763</b>	
	AL-Forever Daig 6763	
BW..... <b>+</b>	The Unanimous are consistent with long, deep, thick genetics; high marbling and big weaning.	
WW..... <b>+</b>		
YW..... <b>+</b>		
Milk..... <b>+</b>		
	125 Day ADG..... <b>4.12</b>	365 REA..... <b>12.0</b>
365 PLV. <b>187</b>	205 ADJ..... <b>865</b>	% IM Fat..... <b>6.70</b>
\$B.....	365 ADJ..... <b>1528</b>	Rib Fat..... <b>0.27</b>
	WDA..... <b>4.33</b>	365 ADJ SCR..... <b>35</b>

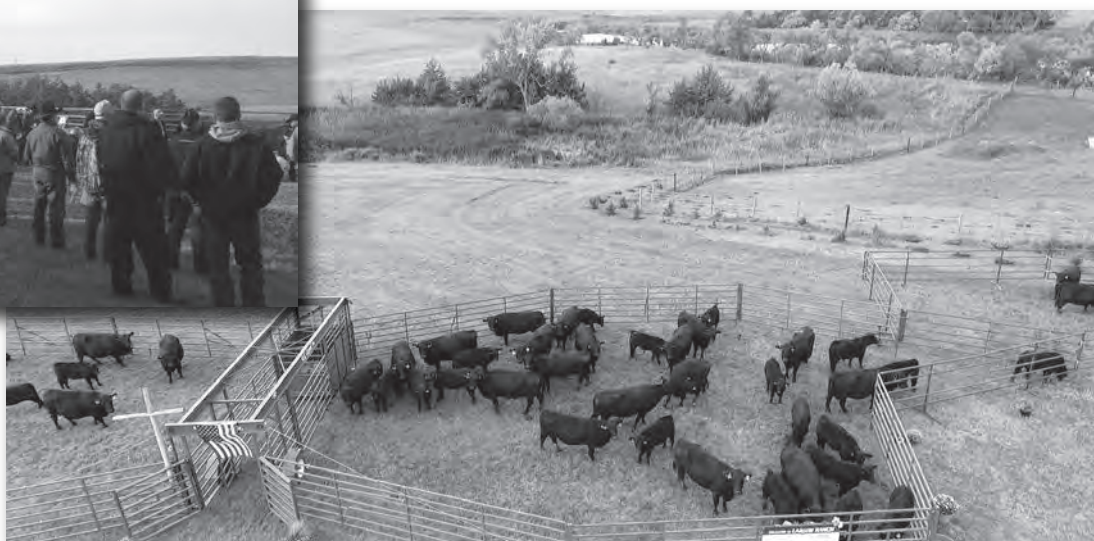
# 45 — REGISTERED ANGUS BULLS — LOTS 1-44

<b>41</b>	<b>AAA18703818</b>	<b>46AKC0620</b>
	<b>TATTOO</b> FB73	<b>COWS AGE</b> 3
<b>Registered Polled</b>	Brookdale Outback 430 (AAA17532284) <b>ML-Outmark-C71 (AAA18049485)</b> Brookdale Miss Wix 71(AAA17158040)	
	Hoover Dam (AAA16124994) <b>DGL Hoover Jack B73 (AAA18374174)</b> Brookdale Pride 73 (AAA14586918)	
BD.. <b>4/19/16</b>	Big weaning, big yearling, large scrotal, and high marbling out of a great 3 year old cow. Grand dam is 13 years old and still producing.	
BW..... <b>78</b>		
BW..... <b>+1.4</b>		
WW..... <b>+55</b>		
YW..... <b>+93</b>		
Milk..... <b>+27</b>		
365 PLV. <b>186</b>	125 Day ADG..... <b>3.70</b>	365 REA..... <b>13.9</b>
\$B... <b>117.44</b>	205 ADJ..... <b>851</b>	% IM Fat..... <b>6.22</b>
	365 ADJ..... <b>1403</b>	Rib Fat..... <b>0.37</b>
	WDA..... <b>3.96</b>	365 ADJ SCR..... <b>40</b>

<b>42</b>	<b>AAA18709122</b>	<b>46AKC0616</b>
	<b>TATTOO</b> F4491	<b>COWS AGE</b> 2
<b>Registered Polled</b>	Brookdale Outback 430 (AAA17532284) <b>ML-Outmark-C71 (AAA18049485)</b> Brookdale Miss Wix 71(AAA17158040)	
	Sitz Upward 307R (AAA14963730) <b>JD Up Dateline-4491 (AAA18696454)</b> Brookdale Jodi 491(AAA17158077)	
BD.. <b>4/12/16</b>	Grand Dam is sire to Lot # 1. This 2 year old heifer really produced a good one here.	
BW..... <b>80</b>		
BW..... <b>1.5</b>		
WW..... <b>61</b>		
YW..... <b>105</b>		
Milk..... <b>30</b>		
365 PLV. <b>177</b>	125 Day ADG..... <b>3.58</b>	365 REA..... <b>11.0</b>
\$B... <b>138.71</b>	205 ADJ..... <b>667</b>	% IM Fat..... <b>5.12</b>
	365 ADJ..... <b>1272</b>	Rib Fat..... <b>0.31</b>
	WDA..... <b>3.42</b>	365 ADJ SCR..... <b>36</b>

<b>43</b>	<b>AAA18701737</b>	<b>46AKC0612</b>
	<b>TATTOO</b> F620	<b>COWS AGE</b> 6
<b>Registered Polled</b>	Visiontopline Royal Stockman (AAA16368389) <b>Vision Unanimous 1418 (AAA16992096)</b> Vision Edella 665 (AAA15526060)	
	S A V Bismarck 5682 (AAA15109865) <b>Brookdale Zara 620 (AAA16857847)</b> ALC O Zara R26L (AAA14068838)	
BD.. <b>3/28/16</b>	His mother raised our top selling bull in the 2014 and 2016 sales - long bodied, sound made bull similar to the cow's previous two bulls.	
BW..... <b>82</b>		
BW..... <b>+1.6</b>		
WW..... <b>+56</b>		
YW..... <b>+95</b>		
Milk..... <b>+17</b>		
365 PLV. <b>160</b>	125 Day ADG..... <b>3.86</b>	365 REA..... <b>12.0</b>
\$B... <b>131.69</b>	205 ADJ..... <b>738</b>	% IM Fat..... <b>5.24</b>
	365 ADJ..... <b>1394</b>	Rib Fat..... <b>0.47</b>
	WDA..... <b>3.79</b>	365 ADJ SCR..... <b>37</b>

<b>44</b>	<b>AAA1870849</b>	<b>46AKC0629</b>
	<b>TATTOO</b> FR204	<b>COWS AGE</b> 11
<b>Registered Polled</b>	RA Lincoln W144 (AAA16048473) <b>S Titled 1145 (AAA17007985)</b> S Cora 572 (AAA15980734)	
	W C C Special Design L309(AAA13846942) <b>VJS-Forever Special-R204 (AAA18697575)</b> Lady Raven U204 (AAA13225921)	
BD.. <b>4/06/16</b>	A Titled, Special Design combination really checks out. This cow family has a lot of longevity in it. Mother and Grand Dam are super deep, broody, excellent udder cows.	
BW..... <b>90</b>		
BW..... <b>0.1</b>		
WW..... <b>51</b>		
YW..... <b>84</b>		
Milk..... <b>28</b>		
365 PLV. <b>178</b>	125 Day ADG..... <b>3.74</b>	365 REA..... <b>13.0</b>
\$B..... <b>NA</b>	205 ADJ..... <b>748</b>	% IM Fat..... <b>6.01</b>
	365 ADJ..... <b>1358</b>	Rib Fat..... <b>0.29</b>
	WDA..... <b>3.71</b>	365 ADJ SCR..... <b>36</b>



## Angus Tour



# 31 — PUREBRED ANGUS BULLS — LOTS 46—75

46	TATTOO	COWS AGE	TAG COLOR
	FVL95	8	Purple

**Pedigreed Polled**

Rito 707 of Ideal 3407/7075(AAA13066860)  
**S A V Resource 1441 (AAA17016597)**  
 S A V Blackcap May 4136(AAA14739095)

VJS-Kaboom Freight-VL95  
**Kaboom RU16**  
 VJS FlnrEmu-L95

BD.. **4/19/16**  
 BW..... **92**

BW ..... **1.2**  
 WW ..... **+54**  
 YW ..... **+100**  
 Milk..... **+26**

A high performing bull with a large scrotal measurement - this is why Resource is so popular - from a cow family that doesn't miss.

125 Day ADG.....	<b>3.88</b>	365 REA .....	<b>14.3</b>
205 ADJ.....	<b>834</b>	% IM Fat .....	<b>5.50</b>
365 ADJ.....	<b>1508</b>	Rib Fat.....	<b>0.29</b>
WDA.....	<b>3.95</b>	365 ADJ SCR .....	<b>42</b>

365 PLV. **167**  
 \$B.. **157.00**

47	TATTOO	COWS AGE	TAG COLOR
	F9308	7	Red

**Pedigreed Polled**

Rito 707 Ideal 3407-7075  
**SAV Resource 1441 (AAA17016597)**  
 SAV Black Cap May 4136 (AAA14739095)

S A V Bismark 5682 (AAA15109865)  
**DGL-BisBand 9308**  
 Bando 598-909/Man. 779

BD.. **4/8/16**  
 BW..... **90**

BW..... **0**  
 WW ..... **+48**  
 YW ..... **+74**  
 Milk..... **+28**

A very good Resource son...a very correct, sound made bull.

125 Day ADG.....	<b>3.98</b>	365 REA .....	<b>12.8</b>
205 ADJ.....	<b>804</b>	% IM Fat .....	<b>5.57</b>
365 ADJ.....	<b>1468</b>	Rib Fat.....	<b>0.39</b>
WDA.....	<b>4.00</b>	365 ADJ SCR .....	<b>38</b>

365 PLV. **174**  
 \$B.. **154.00**

48	TATTOO	COWS AGE	TAG COLOR
	FXL95	6	Purple

**Pedigreed Polled**

H A Image Maker 0415 (AAA13066860)  
**Benfield Substance 8506 (AAA16207085)**  
 Benfield Edella 1105 (AAA14177734)

SAVFinal Answer 0035(AAA13592905)  
**VJS Final Boom XL95**  
 VJS-Kaboom-L95

BD. **3/23/16**  
 BW..... **82**

BW ..... **-1.2**  
 WW ..... **+37**  
 YW ..... **+64**  
 Milk..... **+22**

Big weaning weight, great marbling, easy calving bull.

125 Day ADG.....	<b>3.52</b>	365 REA .....	<b>13.0</b>
205 ADJ.....	<b>807</b>	% IM Fat .....	<b>5.01</b>
365 ADJ.....	<b>1396</b>	Rib Fat.....	<b>0.38</b>
WDA.....	<b>3.89</b>	365 ADJ SCR .....	<b>40</b>

365 PLV. **156**  
 \$B.. **110.00**

49	TATTOO	COWS AGE	TAG COLOR
	F10	14	Black & White

**Pedigreed Polled**

H A Image Maker 0415 (AAA13739532)  
**Benfield Substance 8506 (AAA16207085)**  
 Benfield Edella 1105 (AAA14177734)

Jackstone 7713  
**TDS-Jack-10**  
 Angus

BD. **4/14/16**  
 BW..... **84**

BW..... **+1.9**  
 WW ..... **+64**  
 YW ..... **+101**  
 Milk..... **+26**

A Substance bull topped our 2014 sale selling to Wolf Angus and Roger Joseph - this bull is made very similar, very sound with good length, depth, and spring of rib.

125 Day ADG.....	<b>4.52</b>	365 REA .....	<b>13.4</b>
205 ADJ.....	<b>793</b>	% IM Fat .....	<b>7.31</b>
365 ADJ.....	<b>1573</b>	Rib Fat.....	<b>0.38</b>
WDA.....	<b>4.23</b>	365 ADJ SCR .....	<b>37.5</b>

365 PLV. **143**  
 \$B.. **170.00**

50	TATTOO	COWS AGE	TAG COLOR
	FZS11	4	Pink

**Pedigreed Polled**

H A Image Maker 0415 (AAA13739532)  
**Benfield Substance 8506 (AAA16207085)**  
 Benfield Edella 1105 (AAA14177734)

A A R Really Windy 1205 (AAA12448729)  
**KL-Windy Flnr X2-Z**  
 Freightliner/Freightliner/YS

BD. **3/23/16**  
 BW..... **80**

BW ..... **-0.2**  
 WW ..... **+60**  
 YW ..... **+104**  
 Milk..... **+24**

Out of a 14 year old cow that is still in production. That's the kind of cattle that can turn you a profit.

125 Day ADG.....	<b>3.36</b>	365 REA .....	<b>14.4</b>
205 ADJ.....	<b>759</b>	% IM Fat .....	<b>4.40</b>
365 ADJ.....	<b>1321</b>	Rib Fat.....	<b>0.29</b>
WDA.....	<b>3.58</b>	365 ADJ SCR .....	<b>37</b>

365 PLV. **179**  
 \$B.....

51	TATTOO	COWS AGE	TAG COLOR
	F7595	9	Pink

**Pedigreed Polled**

Sitz Upward 307R (AAA14963730)  
**Bruin Uproar 0070 (16858775)**  
 Falcon Blackbird 6071 (14068805)

S A V 8180 Traveler 004 (AAA13512009)  
**KL Trav-YS-Ent-7595**  
 Yellowstone/Enticer

BD. **4/11/16**  
 BW..... **86**

BW ..... **+0.5**  
 WW ..... **+62**  
 YW ..... **+113**  
 Milk..... **+24**

A larger framed bull that will produce outstanding feeder cattle - an Uproar son was the high selling Angus bull last year.

125 Day ADG.....	<b>3.84</b>	365 REA .....	<b>13.5</b>
205 ADJ.....	<b>793</b>	% IM Fat .....	<b>6.81</b>
365 ADJ.....	<b>1401</b>	Rib Fat.....	<b>0.36</b>
WDA.....	<b>3.84</b>	365 ADJ SCR .....	<b>34</b>

365 PLV. **175**  
 \$B.. **114.00**

# 31 — PUREBRED ANGUS BULLS — LOTS 46—75

52	TATTOO	COWS AGE	46AKC0613
	FV601	8	TAG COLOR Green
<b>Pedigreed Polled</b>	Sitz Upward 307R (AAA14963730) <b>Bruin Upoar 0070 (16858775)</b> Falcon Blackbird 6071 (14068805)		
	TC Gridiron 258 (AAA14237017) <b>AL-Iron Profit-V601</b> Profit/Crossfire		
	Another good Upoar bull.		
	BD... <b>4/16/16</b>		
	BW..... <b>82</b>		
	BW..... <b>-1.2</b>		
	WW..... <b>+64</b>		
	YW..... <b>+108</b>		
	Milk..... <b>+24</b>		
	365 PLV <b>150</b>	125 Day ADG..... <b>3.59</b>	365 REA..... <b>14.2</b>
\$B... <b>117.00</b>	205 ADJ..... <b>787</b>	% IM Fat..... <b>3.97</b>	
	365 ADJ..... <b>1387</b>	Rib Fat..... <b>0.22</b>	
	WDA..... <b>3.83</b>	365 ADJ SCR..... <b>34</b>	

53	TATTOO	COWS AGE	46AKC0668
	F2972	4	TAG COLOR Purple
<b>Pedigreed Polled</b>	Baldridge Kaboom K243CF (AAA13987017) <b>ConnealyThunder (AAA15148659)</b> Parka Of Coanga 241 (AAA13948273)		
	Really Windy 862 <b>VJS-RW Spade-2972</b> VJS-Hi Spade-972		
	Thunder always makes good heifers.		
	BD... <b>4/6/16</b>		
	BW..... <b>93</b>		
	BW.....		
	WW.....		
	YW.....		
	Milk.....		
	365 PLV <b>178</b>	125 Day ADG..... <b>3.64</b>	365 REA..... <b>13.9</b>
\$B.....	205 ADJ..... <b>733</b>	% IM Fat..... <b>5.17</b>	
	365 ADJ..... <b>1333</b>	Rib Fat..... <b>0.22</b>	
	WDA..... <b>3.68</b>	365 ADJ SCR..... <b>39</b>	

54	TATTOO	COWS AGE	46AKC0649
	FXT72	6	TAG COLOR Purple
<b>Pedigreed Polled</b>	LCC New Standard (AAA14218253) <b>R B Active Duty 010 (AAA16718300)</b> B A Lady 6807 305 (AAA15679812)		
	HARB Pendleton 765 JH (AAA15313140) <b>VJS-Pend Iron-XT72</b> Grid Iron/ St. Fort. 425C/Man. 779		
	Active Duty, Pendleton, Grid Iron and Stevenson's Fortune 425C...no wonder he weighed off of momma so well.		
	BD... <b>4/2/16</b>		
	BW..... <b>90</b>		
	BW.....		
	WW.....		
	YW.....		
	Milk.....		
	365 PLV <b>160</b>	125 Day ADG..... <b>3.92</b>	365 REA..... <b>12.7</b>
\$B.....	205 ADJ..... <b>803</b>	% IM Fat..... <b>5.88</b>	
	365 ADJ..... <b>1471</b>	Rib Fat..... <b>0.34</b>	
	WDA..... <b>4.03</b>	365 ADJ SCR..... <b>38</b>	

55	TATTOO	COWS AGE	46AKC0614
	FV022	8	TAG COLOR Red
<b>Pedigreed Polled</b>	LCC New Standard (AAA14218253) <b>RB Active Duty 010 (AAA16718300)</b> B A Lady 6807 305 (AAA15679812)		
	Traveler 004640 <b>DGL-004640 Daig-V022</b> DGL-Daig Emu-6022		
	A very good Active Duty son, long, deep, soggy bull that will produce very good replacement females.		
	BD... <b>4/13/16</b>		
	BW..... <b>94</b>		
	BW..... <b>-1.4</b>		
	WW..... <b>+54</b>		
	YW..... <b>+94</b>		
	Milk..... <b>+22</b>		
	365 PLV <b>193</b>	125 Day ADG..... <b>3.96</b>	365 REA..... <b>14.3</b>
\$B... <b>131.00</b>	205 ADJ..... <b>773</b>	% IM Fat..... <b>5.88</b>	
	365 ADJ..... <b>1436</b>	Rib Fat..... <b>0.34</b>	
	WDA..... <b>3.88</b>	365 ADJ SCR..... <b>38</b>	

X	TATTOO	COWS AGE	46AKC0666
	F68Y	5	TAG COLOR White
<b>Pedigreed Polled</b>	Werner War Party 2417(AAA16004857) <b>RB Tour Of Duty 177 (AAA 16984170)</b> BA Lady 6807-305 (AAA15679812)		
	E A Main Attraction 8014 (AAA1629036) <b>ML-Main Flnr-68Y</b> ML-Freightliner		
	125 Day ADG..... <b>3.88</b>		
	BD... <b>3/31/16</b>		
	BW..... <b>90</b>		
	BW..... <b>+0.0</b>		
	WW..... <b>+00</b>		
	YW..... <b>+000</b>		
	Milk..... <b>+00</b>		
	365 PLV <b>164</b>	205 ADJ..... <b>652</b>	% IM Fat..... <b>3.78</b>
\$B.....	365 ADJ..... <b>1297</b>	Rib Fat..... <b>0.27</b>	
	WDA..... <b>3.41</b>	365 ADJ SCR..... <b>34</b>	



What you do today can improve all your tomorrows.



# 31 — PUREBRED ANGUS BULLS — LOTS 46—75

56	TATTOO F1116	COWS AGE 5	TAG COLOR Red	46AKC0637
<b>Pedigreed Polled</b>	S Alliance 3313 (AAA147186780) S Chisum 6175 (AAA15511451) S Gloria 464 (AAA148408680)			
BD <b>4/16/16</b> BW..... <b>90</b>	HARB Pendleton 765 JH(AAA1531340) 15883460 DGL-PendLnr Saug-1116 DGL-FlnrSaug-4116			
BW..... <b>-0.2</b> WW..... <b>+52</b> YW..... <b>+87</b> Milk..... <b>+24</b>	Another big pelvic bull to make heifers out of this bloodline.			
365 PLV <b>186</b> \$B... <b>101.00</b>	125 Day ADG..... <b>4.02</b>	365 REA..... <b>14.1</b>		
	205 ADJ..... <b>798</b>	% IM Fat..... <b>4.15</b>		
	365 ADJ..... <b>1488</b>	Rib Fat..... <b>0.30</b>		
	WDA..... <b>4.05</b>	365 ADJ SCR..... <b>35</b>		

57	TATTOO F0495	COWS AGE 6	TAG COLOR Purple	46AKC0607
<b>Pedigreed Polled</b>	Bon View Bando 598 (AAA11104267) Connealy Freightliner (AAA13026916) Joana Erica of Conanga (AAA12015525)			
BD <b>4/22/16</b> BW..... <b>86</b>	Sitz Upward 307R (AAA14963730) VJS-Up Yellow-0495 VJS-Yellow Ent-495			
BW..... <b>+0.8</b> WW..... <b>+58</b> YW..... <b>+110</b> Milk..... <b>+28</b>	Here is a Freightliner-Upward bull you have been looking for, to make a great set of females out of.			
365 PLV <b>180</b> \$B... <b>160.00</b>	125 Day ADG..... <b>4.48</b>	365 REA..... <b>14.8</b>		
	205 ADJ..... <b>742</b>	% IM Fat..... <b>4.21</b>		
	365 ADJ..... <b>1508</b>	Rib Fat..... <b>0.28</b>		
	WDA..... <b>4.12</b>	365 ADJ SCR..... <b>36</b>		

58	TATTOO F279Y	COWS AGE 5	TAG COLOR Green	46AKC0625
<b>Pedigreed Polled</b>	RA Lincoln W144 (AAA16048473) S Tittlest 1145 (AAA17007985) S Cora 572 (AAA15980734)			
BD <b>4/7/16</b> BW..... <b>82</b>	S A V Bismark 5682 (AAA15109865) AL-Bis 1334-279Y AL-Admiral Pfred-279			
BW..... <b>-1.3</b> WW..... <b>+54</b> YW..... <b>+91</b> Milk..... <b>+20</b>	Easy calving, high dollar beef that still has rib-eye and marbling.			
365 PLV <b>156</b> \$B... <b>137.00</b>	125 Day ADG..... <b>3.80</b>	365 REA..... <b>14.1</b>		
	205 ADJ..... <b>782</b>	% IM Fat..... <b>5.26</b>		
	365 ADJ..... <b>1399</b>	Rib Fat..... <b>0.36</b>		
	WDA..... <b>3.78</b>	365 ADJ SCR..... <b>36</b>		

60	TATTOO FC595	COWS AGE 2	TAG COLOR Pink	46AKC0632
<b>Pedigreed Polled</b>	A A R Windy Ridge 362 (AAA11807212) A A R Really Windy 1205 (AAA12448729) A A R Lady Kelton 2170 (AAA11458523)			
BD <b>4/4/16</b> BW..... <b>77</b>	R B Active Duty 010 (AAA16718300) KL-Active Core-C595 KL-Encore 527-595			
BW..... <b>-2.0</b> WW..... <b>+48</b> YW..... <b>+92</b> Milk..... <b>+22</b>	Large scrotal, easy calving with punch.			
365 PLV <b>168</b> \$B... <b>148</b>	125 Day ADG..... <b>3.86</b>	365 REA..... <b>12.3</b>		
	205 ADJ..... <b>737</b>	% IM Fat..... <b>5.84</b>		
	365 ADJ..... <b>1348</b>	Rib Fat..... <b>0.25</b>		
	WDA..... <b>3.68</b>	365 ADJ SCR..... <b>40</b>		

61	TATTOO FC4595	COWS AGE 2	TAG COLOR Purple	46AKC0626
<b>Pedigreed Polled</b>	A A R Windy Ridge 362 (AAA11807212) A A R Really Windy 1205 (AAA12448729) A A R Lady Kelton 2170 (AAA11458523)			
BD <b>3/28/16</b> BW..... <b>78</b>	TC Aberdeen 759 (AAA15840414) VJS-Deen Up- 4595 VJS-UpYellow-595			
BW..... <b>-3.3</b> WW..... <b>+44</b> YW..... <b>+88</b> Milk..... <b>+21</b>	Great cow family...combine with lots 57, 51, 48 & 46			
365 PLV <b>158</b> \$B... <b>156.00</b>	125 Day ADG..... <b>3.08</b>	365 REA..... <b>11.6</b>		
	205 ADJ..... <b>728</b>	% IM Fat..... <b>4.72</b>		
	365 ADJ..... <b>1254</b>	Rib Fat..... <b>0.24</b>		
	WDA..... <b>3.41</b>	365 ADJ SCR..... <b>34</b>		

62	TATTOO FC001	COWS AGE 2	TAG COLOR White	46AKC0605
<b>Pedigreed Polled</b>	A A R Windy Ridge 362 (AAA11807212) A A R Really Windy 1205 (AAA12448729) A A R Lady Kelton 2170 (AAA11458523)			
BD <b>3/17/16</b> BW..... <b>68</b>	S A V Final Answer 0035 (AAA13592905) ML-FARW Advant-C001 ML-RW AdvantPir-001			
BW..... <b>-3.0</b> WW..... <b>+44</b> YW..... <b>+86</b> Milk..... <b>+20</b>	Incredible calving ease, don't miss this pedigree out of a tremendous cow family. Light blue left eye.			
365 PLV <b>166</b> \$B... <b>139.00</b>	125 Day ADG..... <b>3.16</b>	365 REA.....		
	205 ADJ..... <b>600</b>	% IM Fat.....		
	365 ADJ..... <b>1139</b>	Rib Fat.....		
	WDA..... <b>3.04</b>	365 ADJ SCR..... <b>34</b>		

# 31 — PUREBRED ANGUS BULLS — LOTS 46—75

63	TATTOO	COWS AGE	TAG COLOR
	F491	2	Orange & Black

**Pedigreed Polled**

Connealy Final Product (AAA15848422)  
**Sitz Investment 660Z (AAA17179119)**  
 Sitz Ellunas Elite 656T (AAA15836550)

V D A R Really Windy 4097 (AAA15776681)  
**DM-RW4097 125-Z91**  
 DM-RWNichol-91

Sitz Investment combined with Really Windy 4097 and Really Windy 1205...this works.

BD **3/25/16**  
 BW.....**76**

BW.....  
 WW.....  
 YW.....  
 Milk.....

365 PLV. **179**  
 \$B.....

125 Day ADG.....	<b>3.76</b>	365 REA.....	<b>11.7</b>
205 ADJ.....	<b>747</b>	% IM Fat.....	<b>4.78</b>
365 ADJ.....	<b>1343</b>	Rib Fat.....	<b>0.37</b>
WDA.....	<b>3.68</b>	365 ADJ SCR.....	<b>35</b>

64	TATTOO	COWS AGE	TAG COLOR
	FCT72	2	Purple

**Pedigreed Polled**

Connealy Product 568 (AAA15148584)  
**Connealy Final Product (AAA15848422)**  
 Ebonista of Conanga 471 (AAA14220178)

Sitz Upward 307R (AAA14963730)  
**VJS-UpPend-CT72**  
 VJS-PendIron-T721

Prime marbling heifer bull; hard to find.

BD **3/12/16**  
 BW.....**73**

BW.....**-1.4**  
 WW.....**+64**  
 YW.....**+98**  
 Milk.....**+24**

365 PLV. **148**  
 \$B.....**152.00**

125 Day ADG.....	<b>4.00</b>	365 REA.....	<b>11.3</b>
205 ADJ.....	<b>599</b>	% IM Fat.....	<b>7.22</b>
365 ADJ.....	<b>1238</b>	Rib Fat.....	<b>0.40</b>
WDA.....	<b>3.37</b>	365 ADJ SCR.....	<b>32</b>

65	TATTOO	COWS AGE	TAG COLOR
	FZ213	4	Red

**Pedigreed Polled**

Cole Creek Black Cedar 46P (AAA14496765)  
**Cole Creek Cedar Ridge 1V (AAA16134394)**  
 Creek Clovanada 49S (AAA15123755)

S A V Final Answer 0035 (AAA13592905)  
**DGL-FARWPF-Z213**  
 DGL-RWPFQAS-0213

A bigger framed Cedar Ridge bull - good performance with tremendous feet and legs.

BD **4/01/16**  
 BW.....**90**

BW.....  
 WW.....  
 YW.....  
 Milk.....

365 PLV. **172**  
 \$B.....

125 Day ADG.....	<b>3.59</b>	365 REA.....	<b>12.4</b>
205 ADJ.....	<b>787</b>	% IM Fat.....	<b>4.82</b>
365 ADJ.....	<b>1403</b>	Rib Fat.....	<b>0.41</b>
WDA.....	<b>3.81</b>	365 ADJ SCR.....	<b>38</b>

66	TATTOO	COWS AGE	TAG COLOR
	FV02	8	White

**Pedigreed Polled**

Cole Creek Black Cedar 46P (AAA14496765)  
**Cole Creek Cedar Ridge 1V (AAA16134394)**  
 Cole Creek Clovanada 49S (AAA15123755)

Mytty In Focus (AAA13880818)  
**ML New Focus-V02**  
 ML-New Spade-002

This cow has consistently had bull sell in the top 5 on several sales in the past.

BD **4/8/16**  
 BW.....**78**

BW.....**-1.6**  
 WW.....**+72**  
 YW.....**+109**  
 Milk.....**+26**

365 PLV. **152**  
 \$B.....**175.00**

125 Day ADG.....	<b>3.36</b>	365 REA.....	<b>14.3</b>
205 ADJ.....	<b>759</b>	% IM Fat.....	<b>4.93</b>
365 ADJ.....	<b>1331</b>	Rib Fat.....	<b>0.41</b>
WDA.....	<b>3.62</b>	365 ADJ SCR.....	<b>37</b>

67	TATTOO	COWS AGE	TAG COLOR
	DZ203	3	White

**Pedigreed Polled**

SAV Final Answer 0035  
**Final Answer Y313**  
 Rainmaker N313

Sitz Upward  
**MLUpGlobal-Z203**  
 ML-Global Rito-203

Exceptional \$ beef with high marbling.

BD...4/23/15  
 BW.....**71**

BW.....**+1.0**  
 WW.....**+42**  
 YW.....**+80**  
 Milk.....**+16**

365 PLV. **167**  
 \$B.....**+143**

94 Day ADG.....	<b>3.83</b>	365 REA.....	<b>14.0</b>
205 ADJ.....	<b>758</b>	% IM Fat.....	<b>5.80</b>
365 ADJ.....	<b>1217</b>	Rib Fat.....	<b>0.22</b>
WDA.....	<b>3.79</b>	365 ADJ SCR.....	<b>31</b>

68	TATTOO	COWS AGE	TAG COLOR
	F7308	9	Red

**Pedigreed Polled**

Sitz Traveler 8180 (AAA11367940)  
**S A V Final Answer 0035 (AAA13592905)**  
 S A V Emulous 8145 (AAA13094078)

RAB-EGL Blue Moon4407M (AAA14422326)  
**DGL-BlueBando-7308**  
 DGL-Bando-308

This is why Final Answer has stuck around so long - calving ease with growth - produced from a 9 year old cow.

BD **4/08/16**  
 BW.....**80**

BW.....**-4.3**  
 WW.....**+68**  
 YW.....**+109**  
 Milk.....**+28**

365 PLV. **171**  
 \$B.....**167.00**

125 Day ADG.....	<b>3.96</b>	365 REA.....	<b>14.6</b>
205 ADJ.....	<b>773</b>	% IM Fat.....	<b>5.81</b>
365 ADJ.....	<b>1486</b>	Rib Fat.....	<b>0.38</b>
WDA.....	<b>3.99</b>	365 ADJ SCR.....	<b>40</b>



# 31 — PUREBRED ANGUS BULLS — LOTS 46—75

<b>B</b>	<b>TATTOO</b>	<b>COWS AGE</b>	<b>46AKC0643</b>
	<b>F7124</b>	<b>9</b>	<b>TAG COLOR</b> Red
<b>Pedigreed Polled</b>			
Sitz Traveler 8180 (AAA11367940) S A V Final Answer 0035 (AAA13592905) S A V Emulous 8145 (AAA13094078)			
RABEGL Blue Moon4407M(AAA14422326) <b>DGL-Blue Pfred-7124</b> DGL-Pfred HSP-1124			
BD <b>4/11/16</b> BW..... <b>78</b>			
BW..... <b>-2.2</b> WW..... <b>+68</b> YW..... <b>+90</b> Milk..... <b>+22</b>			
365 PLV. <b>153</b> \$B... <b>143.00</b>	125 Day ADG..... <b>3.44</b> 205 ADJ..... <b>722</b> 365 ADJ..... <b>1389</b> WDA..... <b>3.68</b>	365 REA..... <b>16.6</b> % IM Fat..... <b>6.79</b> Rib Fat..... <b>0.44</b> 365 ADJ SCR..... <b>36.5</b>	

<b>69</b>	<b>TATTOO</b>	<b>COWS AGE</b>	<b>46AKC0601</b>
	<b>F9800</b>	<b>7</b>	<b>TAG COLOR</b> Purple
<b>Pedigreed Polled</b>			
Sitz Traveler 8180 (AAA11367940) S A V Final Answer 0035 (AAA13592905) S A V Emulous 8145 (AAA13094078)			
Traveler 004640 <b>VJS-004640RW-9800</b> VJS-RW1205PF-1800			
BD. <b>4/10/16</b> BW..... <b>70</b>			
BW..... WW..... YW..... Milk.....	Triple bred for calving ease.		
365 PLV. <b>163</b> \$B.....	125 Day ADG..... <b>3.24</b> 205 ADJ..... <b>679</b> 365 ADJ..... <b>1227</b> WDA..... <b>3.34</b>	365 REA..... <b>12.5</b> % IM Fat..... <b>3.90</b> Rib Fat..... <b>0.27</b> 365 ADJ SCR..... <b>36</b>	

<b>70</b>	<b>TATTOO</b>	<b>COWS AGE</b>	<b>46AKC0611</b>
	<b>F638</b>	<b>10</b>	<b>TAG COLOR</b> Red
<b>Pedigreed Polled</b>			
Sitz Traveler 8180 (AAA11367940) S A V Final Answer 0035 (AAA13592905) S A V Emulous 8145 (AAA13094078)			
RAB-EGL Blue Moon4407M(AAA14422326) <b>DGL-Blue Bando-6308</b> DGL-Bando Man-1308			
BD <b>4/16/16</b> BW..... <b>74</b>			
BW..... <b>-2.0</b> WW..... <b>+60</b> YW..... <b>+102</b> Milk..... <b>+20</b>			
365 PLV. <b>158</b> \$B... <b>106.40</b>	125 Day ADG..... <b>3.04</b> 205 ADJ..... <b>675</b> 365 ADJ..... <b>1194</b> WDA..... <b>3.25</b>	365 REA..... <b>12.1</b> % IM Fat..... <b>3.90</b> Rib Fat..... <b>0.27</b> 365 ADJ SCR..... <b>34</b>	

Calving ease out of another cow with longevity.

<b>71</b>	<b>TATTOO</b>	<b>COWS AGE</b>	<b>46AKC0655</b>
	<b>FXV02</b>	<b>6</b>	<b>TAG COLOR</b> White
<b>Pedigreed Polled</b>			
Basin Payweight 006S (AAA15332050) Basin Payweight 1682 (AAA17038724) 21 AR O Lass 7017 (AAA15875998)			
S A V Final Answer 0035 (AAA13592905) <b>ML-FA Focus-XV02</b> ML-New Focus-V02			
BD <b>4/13/16</b> BW..... <b>78</b>			
BW..... <b>-2.2</b> WW..... <b>+68</b> YW..... <b>+118</b> Milk..... <b>+24</b>	Make sure to look up this bull on sale day - long, deep, with muscle and bone - big scrotal, calving ease to boot - you'll drive a long way to find another 1682 son like this bull.		
365 PLV. <b>166</b> \$B... <b>169.00</b>	125 Day ADG..... <b>4.04</b> 205 ADJ..... <b>796</b> 365 ADJ..... <b>1491</b> WDA..... <b>4.03</b>	365 REA..... <b>14.6</b> % IM Fat..... <b>5.05</b> Rib Fat..... <b>0.40</b> 365 ADJ SCR..... <b>40</b>	

<b>72</b>	<b>TATTOO</b>	<b>COWS AGE</b>	<b>46AKC0634</b>
	<b>F3812</b>	<b>3</b>	<b>TAG COLOR</b> Red
<b>Pedigreed Polled</b>			
Brookdale Outback 430 (AAA17532284) ML-Outmark-C71 (AAA18049485) Brookdale Miss Wix 71(AAA17158040)			
EXAR Upshot 0562B (AAA16541214) <b>DGL-UpFreight-3812</b> DGL-FLNRPDBS-812			
BD <b>3/30/16</b> BW..... <b>88</b>			
BW..... <b>-0.8</b> WW..... <b>+67</b> YW..... <b>+119</b> Milk..... <b>+22</b>			
365 PLV. <b>175</b> \$B... <b>113.00</b>	125 Day ADG..... <b>3.91</b> 205 ADJ..... <b>808</b> 365 ADJ..... <b>1523</b>	365 REA..... <b>13.1</b> % IM Fat..... <b>5.77</b> Rib Fat..... <b>0.27</b>	

Another big birth to yearling spread bull combined with a large pelvic.



**Lot 71**

# 31 — PUREBRED ANGUS BULLS — LOTS 46—75

<b>73</b>	<b>46AKC0663</b>	
	<b>TATTOO</b> FB68	<b>COWS AGE</b> 5
	<b>TAG COLOR</b> White	
<b>Pedigreed Polled</b>	Brookdale Outback 430 (AAA17532284) <b>ML-Outmark-C71 (AAA18049485)</b> Brookdale Miss Wix 71(AAA17158040)	
BD. <b>4/13/16</b>	HF Tiger (AAA16526314)	
BW..... <b>80</b>	<b>ML-Tiger Liner-B68</b>	
	ML-Finr X2-68	
BW.....	Prime marbling Outmark son.	
WW.....		
YW.....		
Milk.....		
365 PLV. <b>172</b>	125 Day ADG..... <b>2.98</b>	365 REA..... <b>14.3</b>
\$B.....	205 ADJ..... <b>788</b>	% IM Fat..... <b>7.67</b>
	365 ADJ..... <b>1247</b>	Rib Fat..... <b>0.25</b>

<b>74</b>	<b>46AKC0673</b>	
	<b>TATTOO</b> F3179	<b>COWS AGE</b> 3
	<b>TAG COLOR</b> Green	
<b>Pedigreed Polled</b>	Brookdale Outback 430 (AAA17532284) <b>ML-Outmark-C71 (AAA18049485)</b> Brookdale Miss Wix 71(AAA17158040)	
BD <b>4/10/16</b>	S A V Final Answer 0035 (AAA13592905)	
BW..... <b>80</b>	<b>AL-FA Calculator-3179</b>	
	AL-Calculating HSP-179	
BW..... <b>-2.4</b>	Great Grandmother stayed in the herd until she was 16 years old.	
WW..... <b>+32</b>		
YW..... <b>+63</b>		
Milk..... <b>+20</b>		
365 PLV. <b>169</b>	125 Day ADG..... <b>3.39</b>	365 REA..... <b>12.9</b>
\$B... <b>107.00</b>	205 ADJ..... <b>755</b>	% IM Fat..... <b>4.54</b>
	365 ADJ..... <b>1357</b>	Rib Fat..... <b>0.25</b>
	WDA..... <b>3.61</b>	365 ADJ SCR..... <b>35</b>

<b>75</b>	<b>46AKC0639</b>	
	<b>TATTOO</b> F3595	<b>COWS AGE</b> 3
	<b>TAG COLOR</b> Purple	
<b>Pedigreed Polled</b>	Brookdale Outback 430 (AAA17532284) <b>ML-Outmark-C71 (AAA18049485)</b> Brookdale Miss Wix 71(AAA17158040)	
BD. <b>4/01/16</b>	Hoover Dam (AAA16124994)	
BW..... <b>82</b>	<b>VJS-Hoover-3595</b>	
	Tradition/Yellowstone	
BW..... <b>+1.0</b>	Outmark, Hoover Dam, Tradition, Yellowstone stacked pedigree with a great \$beef.	
WW..... <b>+62</b>		
YW..... <b>+108</b>		
Milk..... <b>+23</b>		
365 PLV. <b>152</b>	125 Day ADG..... <b>3.58</b>	365 REA..... <b>13.7</b>
\$B... <b>119.00</b>	205 ADJ..... <b>706</b>	% IM Fat..... <b>4.83</b>
	365 ADJ..... <b>1317</b>	Rib Fat..... <b>0.25</b>
	WDA..... <b>3.56</b>	365 ADJ SCR..... <b>35</b>



**Highly recommended heifer bulls (19 head)**  
**Lots: 22-24-25-26-27-30-32-35-36-37-61-62-63-**  
**66-67-68-69-70-74**

**Heifer bulls recommended for biggerpelviced heifers.**  
**(15 head)**  
**Lots: 19-21-23-28-29-31-33-34-38-48-50-58-60-64-71**





# 27 — REGISTERED CHAROLAIS BULLS — LOTS 85—114

<b>85</b>	<b>M886196</b>	<b>46AJS2416</b>
	<b>TATTOO</b> F9715	<b>COWS AGE</b> 7

**Registered Polled**

BD.. **4/18/16**  
BW.....**94**

BW.....**+0.3**  
WW.....**+11**  
YW.....**+16**  
Milk.....**+6**

365 PLV. **169**  
TSI.. **154.79**

LHD Cigar E46 (M4334790)  
AL Cigars Pizzaz R517 (M708757)  
AL Miss Blizz 017 (F952252)

Fred's Wyoming LadA40ET (M655458)  
AL-Huskers Laddie-9715 (F1214155)  
AL-Huskers Cigar 6417 (F1214153)

Champion bull in Rapid City WJLS. One of the thickest, stoutest Charolais bulls you can find anywhere. High TSI 54.79 and top 20% of bred MCE. Huge rib-eye. Sire was the high seller at BHSS several years ago to Dave Miller & Bernard Donahue.

162 Day ADG.....	<b>3.89</b>	365 REA .....	<b>17.4</b>
205 ADJ .....	<b>1039</b>	% IM Fat .....	<b>4.53</b>
365 ADJ .....	<b>1494</b>	Rib Fat .....	<b>0.18</b>
WDA.....	<b>4.23</b>	365 ADJ SCR .....	<b>40</b>



<b>86</b>	<b>M886194</b>	<b>46AJS2436</b>
	<b>TATTOO</b> F5217	<b>COWS AGE</b> 11

**Registered Polled**

BD.. **4/18/16**  
BW.....**93**

BW.....  
WW.....  
YW.....  
Milk.....

365 PLV.....  
TSI.....

LHD Cigar E46 (M4334790)  
AL Cigars Pizzaz R517 (M708757)  
AL Miss Blizz 017 (F952252)

LHD Cigar E46 (M4334790)  
AL Cigars Ease 5217F (I145312)  
AL Easy Blizz 217 (F1145311)

Double bred Cigar. Once you outcross now these calves explode.

122 Day ADG.....	<b>3.32</b>	365 REA .....	<b>13.9</b>
205 ADJ.....	<b>677</b>	% IM Fat .....	<b>3.05</b>
365 ADJ .....	<b>1284</b>	Rib Fat .....	<b>0.11</b>
WDA.....	<b>3.40</b>	365 ADJ SCR .....	<b>32</b>

<b>87</b>	<b>M856203</b>	<b>46AJS2407</b>
	<b>TATTOO</b> F0875	<b>COWS AGE</b> 6

**Registered Polled**

BD. **4/09/16**  
BW.....**91**

BW.....**-0.3**  
WW.....**+27**  
YW.....**+57**  
Milk.....**+7**

365 PLV. **153**  
TSI. **208.70**

LT Bluegrass 4017P (M686569)  
LT Ledger 0332 P (M791626)  
LT Brenda 6120 PLD (F1046992)

LT Bluegrass 4017P (M686569)  
DGL Blue Fire 0875 (F1232430)  
DGL-Fire Crown-8775 (F1232428)

Super thick, big stout bull. Big ribeye & high weaning weight. Top 5% for marbling, 7% for scrotal and 15% REA.

122 Day ADG.....	<b>4.39</b>	365 REA .....	<b>17.3</b>
205 ADJ.....	<b>911</b>	% IM Fat .....	<b>4.67</b>
365 ADJ .....	<b>1608</b>	Rib Fat .....	<b>0.25</b>
WDA.....	<b>4.50</b>	365 ADJ SCR .....	<b>39</b>

<b>88</b>	<b>M886207</b>	<b>46AJS2433</b>
	<b>TATTOO</b> F2814	<b>COWS AGE</b> 4

**Registered Polled**

BD.. **4/07/16**  
BW.....**92**

BW.....**-0.9**  
WW.....**+25**  
YW.....**+49**  
Milk.....**+4**

365 PLV. **152**  
TSI. **198.66**

LT Bluegrass 4017P (M686569)  
LT Ledger 0332 P (M791626)  
LT Brenda 6120 PLD (F1046992)

TR PZC MR Turton 0794 ET (EM790987)  
DGL-Easy Turton-2814 (F1214281)  
DGL-EaseFacco-K814 (F950687))

Here is the most complete Ledger son you can find, with style. Big ribeye, high weaning, high TSI. Top 15% breed marbling. Top 15% scrotal, 20%CE. Definitely a herd bull prospect out of a phenomenal cow family.

122 Day ADG.....	<b>4.65</b>	365 REA .....	<b>17.7</b>
205 ADJ.....	<b>824</b>	% IM Fat .....	<b>3.06</b>
365 ADJ .....	<b>1589</b>	Rib Fat .....	<b>0.27</b>
WDA.....	<b>4.40</b>	365 ADJ SCR .....	<b>41</b>





# 27 — REGISTERED CHAROLAIS BULLS — LOTS 85—114

89	M886193	46AJS2408	
	TATTOO	COWS AGE	TAG COLOR
	FX413	6	Green
<b>Registered Polled</b>	LT Bluegrass 4017P (M686569)		
	LT Ledger 0332 P (M791626)		
	LT Brenda 6120 PLD (F1046992)		
	AL Cigars Pizzaz R517 (M708757)		
	AL-Prime Pizzaz-X413 (F1232393)		
	AL-20/20 Prime L413 (F1056957)		
BD..4/07/16	A stacked pedigree bull in the top 15% for scrotal, 25% marble & 30% for REA. Big quarter, smooth, thick and deep...big wide back bull.		
BW.....94			
BW.....+0.1			
WW.....+23			
YW.....+49			
Milk.....+5			
365 PLV.....	122 Day ADG.....3.69	365 REA.....15.3	
TSL..196.31	205 ADJ.....794	% IM Fat.....4.64	
	365 ADJ.....1396	Rib Fat.....0.23	
	WDA.....3.87	365 ADJ SCR.....35	

90	M886193	46AJS2402	
	TATTOO	COWS AGE	TAG COLOR
	F1418	5	Pink
<b>Registered Polled</b>	LT Bluegrass 4017P (M686569)		
	LT Ledger 0332 P (M791626)		
	LT Brenda 6120 PLD (F1046992)		
	LT Bluegrass 4017P (M686569)		
	KL-Cool Blue Cigar 1418		
	AL-Miss Cool Cigar 9418		
BD..4/22/16	Extremely thick, deep, smooth bull with an Angus type head. Big weaning weight bull that will throw feeder calves that really weigh up off the cow and hang an excellent carcass.		
BW.....92			
BW.....-0.2			
WW.....+24			
YW.....+47			
Milk.....+4			
365 PLV.....	122 Day ADG.....4.51	365 REA.....15.6	
TSL..189.80	205 ADJ.....758	% IM Fat.....5.08	
	365 ADJ.....1437	Rib Fat.....0.22	
	WDA.....4.14	365 ADJ SCR.....37	

91	M886209	46AJS2423	
	TATTOO	COWS AGE	TAG COLOR
	FWL75	7	Black
<b>Registered Polled</b>	LT Bluegrass 4017P (M686569)		
	LT Ledger 0332 P (M791626)		
	LT Brenda 6120 PLD (F1046992)		
	AL-Cigars Pizzaz R517 (M708957)		
	DGL-Double Cigar WL75gar		
	DGL-CigarsBlizz17-4775		
BD..4/19/16	A really good Ledger son with high yearling EPDs, high TSI and a big scrotal.		
BW.....87			
BW.....+0.4			
WW.....+29			
YW.....+60			
Milk.....+5			
365 PLV..162	122 Day ADG.....3.80	365 REA.....15.4	
TSL..112.40	205 ADJ.....754	% IM Fat.....3.31	
	365 ADJ.....1395	Rib Fat.....0.20	
	WDA.....3.83	365 ADJ SCR.....40	

92	M886209	46AJS2423	
	TATTOO	COWS AGE	TAG COLOR
	F5775	11	Black
<b>Registered Polled</b>	LT Bluegrass 4017P (M686569)		
	LT Ledger 0332 P (M791626)		
	LT Brenda 6120 PLD (F1046992)		
	LHD Cigar E46 (M434790)		
	DGL-Cigars Dominion-5775		
	DGL-Dom-K775		
BD..4/11/16	Really good depth on a really good EPD bull out of an eleven year old cow, still running out in the hills on the herd.		
BW.....94			
BW.....+0.7			
WW.....+26			
YW.....+51			
Milk.....+5			
365 PLV..151	122 Day ADG.....3.67	365 REA.....14.1	
TSL..197.05	205 ADJ.....742	% IM Fat.....5.12	
	365 ADJ.....1365	Rib Fat.....0.34	
	WDA.....3.74	365 ADJ SCR.....34	

93	M886210	46AJS2411	
	TATTOO	COWS AGE	TAG COLOR
	F6814	10	Black
<b>Registered Polled</b>	LT Bluegrass 4017P (M686569)		
	LT Ledger 0332 P (M791626)		
	LT Brenda 6120 PLD (F1046992)		
	WCR Prime Cut 764 PLD (M460645)		
	DGL-Prime 20/20-6814 (F1214175)		
	DGL-20/20-7814 (F950712)		
BD..4/25/16	Light birth weight EPD, Ledger son out of a tremendous and deep cow, and a big TSI.		
BW.....88			
BW.....+0.5			
WW.....+27			
YW.....+54			
Milk.....+6			
365 PLV.....	122 Day ADG.....3.69	365 REA.....16.5	
TSL..200.13	205 ADJ.....689	% IM Fat.....3.73	
	365 ADJ.....1435	Rib Fat.....0.19	
	WDA.....4.28	365 ADJ SCR.....37	

94	PENDING	46AJS2410	
	TATTOO	COWS AGE	TAG COLOR
	F0429	6	White
<b>Registered Polled</b>	LT Bluegrass 4017P (M686569)		
	LT Ledger 0332 P (M791626)		
	LT Brenda 6120 PLD (F1046992)		
	CMR-Eli Ali-9184 PLD (M502308)		
	ML-Prime Eli-0429		
	ML-PrimeAlab-22970		
BD..4/29/16	Mother is just a really deep, big volume, moderate sized cow. Big yearling EPD with a great TSI.		
BW.....87			
BW.....			
WW.....			
YW.....			
Milk.....			
365 PLV.....	122 Day ADG.....3.48	365 REA.....13.8	
TSL..202.80	205 ADJ.....683	% IM Fat.....4.32	
	365 ADJ.....1338	Rib Fat.....0.09	
	WDA.....3.87	365 ADJ SCR.....37	

# 27 — REGISTERED CHAROLAIS BULLS — LOTS 85—114

<b>96</b>	<b>TATTOO</b>	<b>COWS AGE</b>	<b>46AJS2427</b>
	FZ297	4	TAG COLOR Lime Green

**Registered Polled**

LT Ledger 0332 P (M791626)  
 LT Ledger 3172 PLD (M835605)  
 LT Praise 0462 ET P (EF1124618)

DGL-Easy Cigar-6775 (M758246)  
**AL-Turton's Cool One 3418 (F1214275)**  
 AL Cool Husker 3418N (F1214152)

Great cow family raised this bull. He is very thick and walks out wonderfully. Fill your pasture with lot #95, 96 and 97 to get a tremendous contemporary group of feeder calves.

122 Day ADG.....	<b>3.73</b>	365 REA .....	<b>14.9</b>
205 ADJ.....	<b>802</b>	% IM Fat .....	<b>4.45</b>
365 ADJ.....	<b>1432</b>	Rib Fat.....	<b>0.16</b>
WDA.....	<b>3.92</b>	365 ADJ SCR .....	<b>39</b>

BD. **4/23/16**  
 BW.....**84**  
 BW.....**-1.5**  
 WW.....**+17**  
 YW.....**+34**  
 Milk.....**+5**

365 PLV. **152**  
 TSI...**184.60**



<b>97</b>	<b>TATTOO</b>	<b>COWS AGE</b>	<b>46AJS2414</b>
	F9928	7	TAG COLOR Black

**Registered Polled**

LT LEDGER 0332 P (M791626)  
 LT Ledger 3172 PLD TW (M835605)  
 LT PRAISE 0462 ET P (EF1124618)

TR Firewater 5792 (EM704588)  
**DGL-Easy Fire 9928 (F1214279)**  
 DGL-EaseBlizz L928 (F1056976)

Low birth weight EPD, bigger scrotal 3172 son.

122 Day ADG.....	<b>3.24</b>	365 REA .....	<b>12.9</b>
205 ADJ.....	<b>755</b>	% IM Fat .....	<b>4.71</b>
365 ADJ.....	<b>1262</b>	Rib Fat.....	<b>0.20</b>
WDA.....	<b>3.54</b>	365 ADJ SCR .....	<b>38</b>

BD. **4/29/16**  
 BW.....**90**  
 BW.....**-0.3**  
 WW.....**+27**  
 YW.....**+51**  
 Milk.....**+5**

365 PLV.....  
 \$B...**195.97**

<b>98</b>	<b>TATTOO</b>	<b>COWS AGE</b>	<b>46AJS2426</b>
	F1801	5	TAG COLOR Black

**Registered Polled**

M6 Grid Maker 104 PET (M633377)  
 EC No Doubt 2022 P (M685500)  
 EC Lady Duke 2022 P (F956614)

Fred's Husker 7701 (M472880)  
**DG Prime Husker 1801 (F1232431)**  
 DGL-Prime Cigar-4801 (F1056987)

A super stylish, long, smooth bull with a large ribeye and big weaning weight. High TSI, extremely fancy bull – one of our top picks.

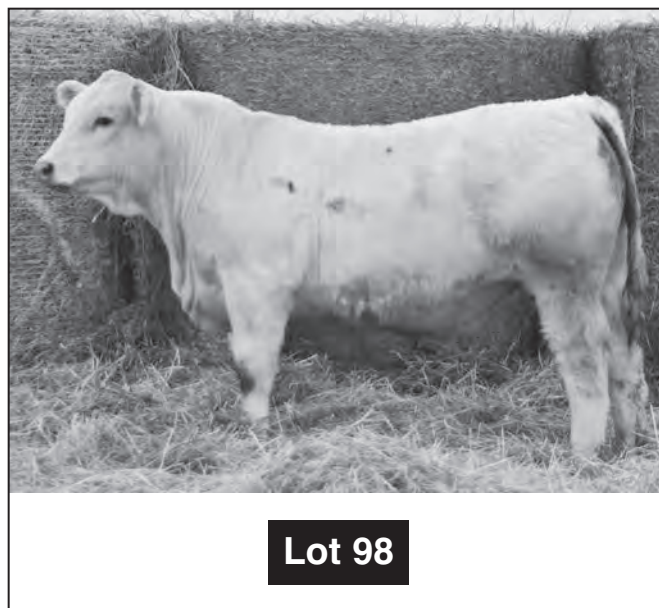
122 Day ADG.....	<b>4.11</b>	365 REA .....	<b>17.0</b>
205 ADJ.....	<b>806</b>	% IM Fat .....	<b>4.25</b>
365 ADJ.....	<b>1519</b>	Rib Fat.....	<b>0.16</b>
WDA.....	<b>4.09</b>	365 ADJ SCR .....	<b>35</b>

BD. **4/04/16**  
 BW.....**94**  
 BW.....**-0.2**  
 WW.....**+25**  
 YW.....**+53**  
 Milk.....**+3**

365 PLV. **167**  
 \$B...**195.72**



*Grand Champion Showman*





# 27 — REGISTERED CHAROLAIS BULLS — LOTS 85—114

<b>99</b>	<b>M886197</b>	<b>46AJS2415</b>	
	<b>TATTOO</b>	<b>COWS AGE</b>	<b>TAG COLOR</b>
	<b>F0881</b>	<b>6</b>	<b>White</b>
<b>Registered Polled</b>	M6 Grid Maker 104 PET (M633377) EC No Doubt 2022 P (M685500) EC Lady Duke 2022 P (F956614)		
BD <b>4/20/16</b> BW..... <b>97</b>	LT Blue Grass 4017 PLD (M686569) <b>ML Blue Prime 0881(F1214183)</b> ML Prime Alab 2881 (F1056955)		
BW..... <b>+0.5</b> WW..... <b>+27</b> YW..... <b>+54</b> Milk..... <b>+6</b>	Easy flashing, deep, thick; No Doubt son, top 25% of the breed for marbling.		
365 PLV..... \$B... <b>199.21</b>	122 Day ADG..... <b>3.30</b>	365 REA..... <b>14.7</b>	
	205 ADJ..... <b>801</b>	% IM Fat..... <b>4.98</b>	
	365 ADJ..... <b>1304</b>	Rib Fat..... <b>0.38</b>	

<b>102</b>	<b>M886197</b>	<b>46AJS2415</b>	
	<b>TATTOO</b>	<b>COWS AGE</b>	<b>TAG COLOR</b>
	<b>FV928</b>	<b>8</b>	<b>Black</b>
<b>Registered Polled</b>	LT Bluegrass 4017P (M686569) WC Big Ben 9036 P (EM775980) VCRMisDuchess9506Polled (F752275)		
BD <b>4/23/16</b> BW..... <b>95</b>	DGL Cigars Fancy One N775 (M673605) <b>DGL Fancy Prime V928 (F1232429)</b>		
BW..... <b>-1.5</b> WW..... <b>+17</b> YW..... <b>+34</b> Milk..... <b>+5</b>	To 15% of breed for CE, top 15% for scrotal and top 20% for MCE.		
365 PLV..... \$B... <b>177.86</b>	122 Day ADG..... <b>3.47</b>	365 REA..... <b>13.7</b>	
	205 ADJ..... <b>780</b>	% IM Fat..... <b>3.84</b>	
	365 ADJ..... <b>1348</b>	Rib Fat..... <b>0.14</b>	
	WDA..... <b>3.75</b>	365 ADJ SCR..... <b>35</b>	

<b>103</b>	<b>PENDING</b>	<b>46AJS2415</b>	
	<b>TATTOO</b>	<b>COWS AGE</b>	<b>TAG COLOR</b>
	<b>F4801</b>	<b>2</b>	<b>Black</b>
<b>Registered Polled</b>	LT Bluegrass 4017P (M686569) WC Big Ben 9036 P (EM775980) VCRMisDuchess9506Polled (F752275)		
BD <b>3/28/16</b> BW..... <b>83</b>	Gerrard Montezuma 6T (M782900) <b>DGL-Montezuma Cigar 4801</b> DGL Cigars Blizz 2801 (F1056978)		
BW..... WW..... YW..... Milk.....	Big, deep sided. Big Ben son out of a 2 year old heifer.		
365 PLV..... \$B.....	122 Day ADG..... <b>3.52</b>	365 REA..... <b>14.2</b>	
	205 ADJ..... <b>774</b>	% IM Fat..... <b>4.16</b>	
	365 ADJ..... <b>1378</b>	Rib Fat..... <b>0.18</b>	
	WDA..... <b>3.72</b>	365 ADJ SCR..... <b>38</b>	

<b>104</b>	<b>PENDING</b>	<b>46AJS2401</b>
	<b>TATTOO</b>	<b>COWS AGE</b>
		<b>Black</b>
<b>Registered Polled</b>	LT Bluegrass 4017P (M686569) WC Big Ben 9036 P (EM775980) VCRMisDuchess9506Polled (F752275)	
BD <b>3/30/16</b> BW..... <b>69</b>	TR MR Firewater 1783 ET (EM809226) <b>DGL Firewater 20-20 4814</b> DGL Cigar 20-20 5814	
BW..... WW..... YW..... Milk.....	Long, stretchy, super calving ease bull with a large scrotal bred into him.	
365 PLV..... \$B.....	122 Day ADG..... <b>3.91</b>	365 REA..... <b>14.6</b>
	205 ADJ..... <b>743</b>	% IM Fat..... <b>2.80</b>
	365 ADJ..... <b>1397</b>	Rib Fat..... <b>0.19</b>
	WDA..... <b>3.77</b>	365 ADJ SCR..... <b>42</b>

<b>105</b>	<b>M886212</b>	<b>46AJS2418</b>	
	<b>TATTOO</b>	<b>COWS AGE</b>	<b>TAG COLOR</b>
	<b>FC020</b>	<b>2</b>	<b>Black</b>
<b>Registered Polled</b>	LT Bluegrass 4017P (M686569) WC Big Ben 9036 P (EM775980) VCRMisDuchess9506Polled (F752275)		
BD <b>3/19/16</b> BW..... <b>81</b>	LT Blue Grass 4017 P (M686569) <b>DGL Blue Ease C020 (F1232432)</b> DGL Ease LL0 R020 (F1056992)		
BW..... <b>-2.3</b> WW..... <b>+21</b> YW..... <b>+41</b> Milk..... <b>+5</b>	Light birth weight, light birth EPD, deep sided Big Ben son. Double bred for calving ease 3 generations back.		
365 PLV..... \$B... <b>186.53</b>	122 Day ADG..... <b>3.65</b>	365 REA..... <b>14.4</b>	
	205 ADJ..... <b>707</b>	% IM Fat..... <b>2.74</b>	
	365 ADJ..... <b>1311</b>	Rib Fat..... <b>0.11</b>	
	WDA..... <b>3.56</b>	365 ADJ SCR..... <b>41</b>	

<b>106</b>	<b>M886214</b>	<b>46AJS2419</b>	
	<b>TATTOO</b>	<b>COWS AGE</b>	<b>TAG COLOR</b>
	<b>F4429</b>	<b>2</b>	<b>White</b>
<b>Registered Polled</b>	LT Bluegrass 4017P (M686569) WC Big Ben 9036 P (EM775980) VCRMisDuchess9506Polled (F752275)		
BD <b>3/28/16</b> BW..... <b>74</b>	TR MR Firewater 1783 ET 9 9EM809226) <b>ML Prime Fire 4429 (F1232411)</b> ML Prime Eli 1429 (F1232406)		
BW..... <b>-2.9</b> WW..... <b>+30</b> YW..... <b>+056</b> Milk..... <b>+6</b>	Big, growth, long bull with a high TSI, super easy calving and extremely low birth weight EPDs. Top 7% of the breed for birth weight, 4% for scrotal, 30% CE.		
365 PLV..... \$B... <b>200.87</b>	122 Day ADG..... <b>3.81</b>	365 REA..... <b>16.0</b>	
	205 ADJ..... <b>695</b>	% IM Fat..... <b>4.37</b>	
	365 ADJ..... <b>1324</b>	Rib Fat..... <b>0.25</b>	
	WDA..... <b>3.58</b>	365 ADJ SCR..... <b>36</b>	

# 27 — REGISTERED CHAROLAIS BULLS — LOTS 85—114

<b>107</b>	<b>PENDING</b>	<b>46AJS2432</b>	
	<b>TATTOO</b>	<b>COWS AGE</b>	<b>TAG COLOR</b>
	<b>F4418</b>	<b>2</b>	<b>Pink</b>

**Registered Polled**

LT Bluegrass 4017P (M686569)  
**WC Big Ben 9036 P (EM775980)**  
 VCRMissDuchess9506Polled (F752275)

BD **3/30/16**  
 BW.....**75**

BW.....  
 WW.....  
 YW.....  
 Milk.....

A really good, thick, deep calving ease deluxe Big Ben son that has calving ease bred back 3 generations, plus the added punch of Cigar bred into him.

LT Blue Grass 4017 P (M686569)  
**KL Blue X 2 Cigar 4418**  
 KL Cool Blue Cigar 1418

122 Day ADG.....**3.57** 365 REA.....**13.8**  
 205 ADJ.....**659** % IM Fat.....**2.75**  
 365 ADJ.....**1251** Rib Fat.....**0.15**  
 WDA.....**3.39** 365 ADJ SCR.....**35**

365 PLV.....  
 \$B.....

<b>108</b>	<b>M886217</b>	<b>46AJS2424</b>	
	<b>TATTOO</b>	<b>COWS AGE</b>	<b>TAG COLOR</b>
	<b>FZ985</b>	<b>4</b>	<b>Green</b>

**Registered Polled**

LT Bluegrass 4017P (M686569)  
**WC Big Ben 9036 P (EM775980)**  
 VCRMissDuchess9506Polled (F752275)

BD **4/26/16**  
 BW.....**85**

BW.....**-2.3**  
 WW.....**+23**  
 YW.....**+50**  
 Milk.....**+9**

Higher marbling, bigger ribeye, light birth weight, feed efficient breeding of Husker in there. Higher milk with big yearling weight EPD

LT Blue Grass 4017 P (M686569)  
**AL Blue Husker Z985 (F1214159)**  
 AL Cool Husker V985 (F1214154)

122 Day ADG.....**3.34** 365 REA.....**15.1**  
 205 ADJ.....**826** % IM Fat.....**5.35**  
 365 ADJ.....**1398** Rib Fat.....**0.35**  
 WDA.....**4.01** 365 ADJ SCR.....**40**

365 PLV.....**000**  
 \$B...**195.62**

<b>109</b>	<b>M886219</b>	<b>46AJS2422</b>	
	<b>TATTOO</b>	<b>COWS AGE</b>	<b>TAG COLOR</b>
	<b>FZ735</b>	<b>4</b>	<b>Black</b>

**Registered Polled**

WC Big Ben 9036 P (EM775980)  
**WCR Bandit 2164 P (M817600)**  
 WCR Ms Duke 0147P (F1122914)

BD **4/19/16**  
 BW.....**89**

BW.....**-1.4**  
 WW.....**+24**  
 YW.....**+46**  
 Milk.....**+9**

DGI Cigars Fancy One N775  
**DGL Fancy Dominion Z735**  
 Schurrtop Dominion

A really thick bull with a lot of spring of rib. Low birth weight EPD, high TSI, top 20% for birthweight, 30% marbling and 30% CE.

122 Day ADG.....**3.85** 365 REA.....**13.6**  
 205 ADJ.....**762** % IM Fat.....**4.10**  
 365 ADJ.....**1327** Rib Fat.....**0.20**  
 WDA.....**3.56** 365 ADJ SCR.....**37**

365 PLV.....  
 \$B...**191.70**

<b>110</b>	<b>PENDING</b>	<b>46AJS2442</b>	
	<b>TATTOO</b>	<b>COWS AGE</b>	<b>TAG COLOR</b>
	<b>F1297</b>	<b>5</b>	<b>White</b>

**Registered Polled**

LT Western Edge 4057 PLD (M686616)  
**LT Stagecoach 8068 PLD (M760644)**  
 LT Lady Macbeth 2131 PLD ((F956197)

BD **4/01/16**  
 BW.....**93**

BW.....  
 WW.....  
 YW.....  
 Milk.....

TR MR FIRE WATER 5792RET (EM704588)  
**ML Easy Fire 1297 (F1214282)**  
 ML Ease 9297 (F950676)

Here he is. The one to put on those black, BWF, or red cows that need more stretch. Big, long and growthy. Big weaning weight and ribeye.

122 Day ADG.....**3.87** 365 REA.....**16.4**  
 205 ADJ.....**827** % IM Fat.....**2.59**  
 365 ADJ.....**1504** Rib Fat.....**0.25**  
 WDA.....**4.04** 365 ADJ SCR.....**5**

365 PLV.....  
 \$B.....

<b>111</b>	<b>PENDING</b>	<b>46AJS2421</b>	
	<b>TATTOO</b>	<b>COWS AGE</b>	<b>TAG COLOR</b>
	<b>F9375</b>	<b>7</b>	<b>Black</b>

**Registered Polled**

LT Western Edge 4057 PLD (M686616)  
**LT Stagecoach 8068 PLD (M760644)**  
 LT Lady Macbeth 2131 PLD ((F956197)

BD **4/18/16**  
 BW.....**92**

BW.....  
 WW.....  
 YW.....  
 Milk.....

DGL-Easy Cigar 6775  
**DGL Easy Cat-9375**  
 DGL Big Dad 3375

Long, deep, thick Stagecoach son.

122 Day ADG.....**3.44** 365 REA.....**14.7**  
 205 ADJ.....**777** % IM Fat.....**3.78**  
 365 ADJ.....**1348** Rib Fat.....**0.16**  
 WDA.....**3.69** 365 ADJ SCR.....**36**

365 PLV.....  
 \$B.....



**Lot 110**



# 27 — REGISTERED CHAROLAIS BULLS — LOTS 85—114

<b>112</b>	<b>M886206</b>	<b>46AJS2438</b>	
	<b>TATTOO</b>	<b>COWS AGE</b>	<b>TAG COLOR</b>
	<b>F2442</b>	<b>14</b>	<b>Black</b>

**Registered Polled**

CMF 192 WRANGLER 256 (M615145)  
 WR Wrangler W601 (M779102)  
 WR MISS PRINCESS T629 (F1071026)

LHD Cigar E46 (M434790)  
**DGL Cigar20 2442 (F1056980)**  
 DGL 20/20 Avig6422 (F950696)

Wrangler crossed with Cigar and 20/20 really works. This guy is thick and deep and really good.

122 Day ADG .....	<b>3.36</b>	365 REA .....	<b>15.6</b>
205 ADJ .....	<b>809</b>	% IM Fat .....	<b>2.86</b>
365 ADJ .....	<b>1339</b>	Rib Fat .....	<b>0.16</b>
WDA .....	<b>3.76</b>	365 ADJ SCR .....	<b>37</b>

BD **4/11/16**  
 BW.....**93**  
 BW.....**+0.2**  
 WW.....**+30**  
 YW.....**+46**  
 Milk.....**+6**

365 PLV.....  
 \$B**+183.16**

<b>113</b>	<b>PENDING</b>	<b>46AJS2428</b>	
	<b>TATTOO</b>	<b>COWS AGE</b>	<b>TAG COLOR</b>
	<b>FC475</b>	<b>2</b>	<b>White</b>

**Registered Polled**

CMF 192 WRANGLER 256 (M615145)  
 WR Wrangler W601 (M779102)  
 WR MISS PRINCESS T629 (F1071026)

BD **3/19/16**  
 BW.....**95**  
 BW.....  
 WW.....  
 YW.....  
 Milk.....

Another big growthy bull with a very large ribeye and a big scrotal. Out of a two-year-old heifer.

122 Day ADG .....	<b>3.89...</b>	365 REA .....	<b>17.9</b>
205 ADJ .....	<b>798...</b>	% IM Fat .....	<b>3.20</b>
365 ADJ .....	<b>1442...</b>	Rib Fat .....	<b>0.22</b>
WDA .....	<b>3.93...</b>	365 ADJ SCR .....	<b>41</b>

365 PLV.....  
 \$B.....

<b>114</b>	<b>PENDING</b>	<b>46AJS2434</b>	
	<b>TATTOO</b>	<b>COWS AGE</b>	<b>TAG COLOR</b>
	<b>FY892</b>	<b>5</b>	<b>Black</b>

**Registered Polled**

LT Assertion 1277 P (M620193)  
 LT Bluegrass 4017 P (M686569)  
 LT Pearl's Breeze 2236 P (F959080)

Gerrard Montezume 6T (M782900)  
**DGL Right Easy Zuma Y892**  
 DGL Ease LLO Ervin 4892

Everybody knows this consistency of LT Bluegrass; high marbling, big ribeye son.

122 Day ADG .....	<b>3.81</b>	365 REA .....	<b>15.7</b>
205 ADJ .....	<b>712</b>	% IM Fat .....	<b>5.42</b>
365 ADJ .....	<b>1361</b>	Rib Fat .....	<b>0.22</b>
WDA .....	<b>3.70</b>	365 ADJ SCR .....	<b>35</b>

BD **4/16/16**  
 BW.....**96**  
 BW.....  
 WW.....  
 YW.....  
 Milk.....

365 PLV.....  
 \$B.....



## You might be a farmer or rancher if...

You have ever worn pajamas with rubber boots for midnight calf checks.

You think that the five gallon bucket is the greatest invention ever made. Really, the greatest ever.

You learned to drive a tractor or feed pickup

loooong before you took drivers ed. Your idea of neighborhood watch is someone calling you to let you know the bulls are out.

Your family instantly becomes silent when the weather comes on the news.

# 5 — PEDIGREED CHAROLAIS BULLS — LOTS 120—124

<b>120</b>	<b>46AJS2409</b>		
	<b>TATTOO</b> FB470 A	<b>COWS AGE</b> 2	<b>TAG COLOR</b> Yellow
<b>Pedigreed Polled</b>	LT Bluegrass 4017P (M686569) LT Ledger 0332 P (M791626) LT Brenda 6120 PLD (F1046992)		
	AL Cigars Blue Dream 5217 (M810364) <b>DGL-Right Blue Cigar B470</b> DGL Right Intim 3470		
BD. <b>4/07/16</b> BW..... <b>89</b>	Lot 120's mother is a daughter of Lot 121. A great cow family, big gaining moderate birth weight; 0332 son.		
BW..... WW..... YW..... Milk.....			
365 PLV..... \$B.....	122 Day ADG..... <b>4.24</b>	365 REA..... <b>13.1</b>	
	205 ADJ..... <b>731</b>	% IM Fat..... <b>4.92</b>	
	365 ADJ..... <b>1487</b>	Rib Fat..... <b>0.18</b>	
	WDA..... <b>3.92</b>	365 ADJ SCR..... <b>37</b>	

<b>121</b>	<b>46AJS2435</b>		
	<b>TATTOO</b> F4470	<b>COWS AGE</b> 14	<b>TAG COLOR</b> Yellow
<b>Pedigreed Polled</b>	WC Big Ben 9036 P (EM775980) WCR Bandit 2164 P (M817600) WCR Ms Duke 0147P (F1122914)		
	WCR Prime Cut 764 PLD (M460645) <b>DGL Prime Chip 470</b> DGL-Poker Chip-470		
BD. <b>4/14/16</b> BW..... <b>96</b>	A big weaning Bandit son of a 14-year-old cow that is still in production. Keep up 120 and 121 together.		
BW..... WW..... YW..... Milk.....			
365 PLV..... \$B.....	122 Day ADG..... <b>3.61</b>	365 REA..... <b>15.4</b>	
	205 ADJ..... <b>841</b>	% IM Fat..... <b>2.70</b>	
	365 ADJ..... <b>1422</b>	Rib Fat..... <b>0.15</b>	
	WDA..... <b>3.99</b>	365 ADJ SCR..... <b>34</b>	

<b>122</b>	<b>46AJS2441</b>		
	<b>TATTOO</b> F3895	<b>COWS AGE</b> 3	<b>TAG COLOR</b> Yellow
<b>Pedigreed Polled</b>	LT Bluegrass 4017P (M686569) <b>ML Blue Cigar CR715</b> LHD Cigar E46 (M4334790)		
	CMR Eli Ali 9184 PLD (M502308) <b>DGL Eli Cut 389J</b> WCR Prime Cut 764 PLD (M460645)		
BD. <b>4/09/16</b> BW..... <b>93</b>	Really good, thick and deep; big ribeye.		
BW..... WW..... YW..... Milk.....			
365 PLV..... \$B.....	122 Day ADG..... <b>3.36</b>	365 REA..... <b>15.5</b>	
	205 ADJ..... <b>769</b>	% IM Fat..... <b>3.50</b>	
	365 ADJ..... <b>1303</b>	Rib Fat..... <b>0.20</b>	
	WDA..... <b>3.63</b>	365 ADJ SCR..... <b>34</b>	

<b>123</b>	<b>46AJS2439</b>		
	<b>TATTOO</b> F1321	<b>COWS AGE</b> 5	<b>TAG COLOR</b> Yellow
<b>Pedigreed Polled</b>	LT Bluegrass 4017P (M686569) <b>ML Blue Cigar CR715</b> LHD Cigar E46 (M4334790)		
	Firewater <b>DGL Easy Fire 1321</b> DGL Easy 20/20-321		
BD. <b>4/30/16</b> BW..... <b>92</b>	Nice sided bull sired by our highest selling 2015 Charolais bull; just a little younger.		
BW..... WW..... YW..... Milk.....			
365 PLV..... \$B.....	122 Day ADG..... <b>3.85</b>	365 REA..... <b>16.0</b>	
	205 ADJ..... <b>711</b>	% IM Fat..... <b>6.20</b>	
	365 ADJ..... <b>1376</b>	Rib Fat..... <b>0.20</b>	
	WDA..... <b>3.75</b>	365 ADJ SCR..... <b>35</b>	

<b>124</b>	<b>46AJS2417</b>		
	<b>TATTOO</b> FS706	<b>COWS AGE</b> 10	<b>TAG COLOR</b> White
<b>Pedigreed Polled</b>	Bubba's Cool Dude N715 Bubba 9715 AL Huskers Laddie 9715		
	Starr D Stemwinder P <b>ML-Stem Cigar-S706</b> ML-CigarStem 3706		
BD. <b>4/08/16</b> BW..... <b>94</b>	Big, big weaning bull out of a consistent top cow. Sell a lot of pounds of calves out of him.		
BW..... WW..... YW..... Milk.....			
365 PLV..... \$B.....	122 Day ADG..... <b>2.00</b>	365 REA..... <b>12.9</b>	
	205 ADJ..... <b>881</b>	% IM Fat..... <b>3.14</b>	
	365 ADJ..... <b>1149</b>	Rib Fat..... <b>0.13</b>	
	WDA..... <b>3.29</b>	365 ADJ SCR..... <b>33</b>	





# 5 — SIMMENTAL & MAINE ANJOU BULLS — LOTS 130—135

130	TATTOO FWM45	COWS AGE 6	TAG COLOR Green & White
<b>Pedigreed Polled</b>	NLC Superior S6018 (2372107)		
	TNT Tanker U263 (470581) OSF TNT Miss S17 (2374139)		
BD <b>4/23/16</b>	Rocky Balboa		
BW <b>92</b>	<b>AML-Wide Rocky-WM45</b> AML-Double Wide-F45		
BW .....	<b>OSF</b>		
WW .....	½ Simm 3/8Maine 1/8 Angus		
YW .....			
Milk .....			
365 PLV <b>179</b>	80 Day ADG <b>3.81</b>	365 REA <b>14.5</b>	
	205 ADJ <b>801</b>	% IM Fat <b>4.88</b>	
	365 ADJ <b>1442</b>	Rib Fat <b>0.14</b>	
	WDA <b>3.93</b>	365 ADJ SCR <b>36</b>	

132	TATTOO FCM45	COWS AGE 3	TAG COLOR Green & White
<b>Pedigreed Polled</b>	Brookdale Outback 430 (AAA17532284)		
	ML-Outmark-C71 (AAA18049485) Brookdale Miss Wix 71(AAA17158040)		
BD <b>4/09/16</b>	FBF1 Combustible (2588018)		
BW <b>70</b>	<b>AML-Combustible BOA CM45</b> AML Rocky DD-WM45		
BW .....	<b>OSF</b>		
WW .....	3/8 Simm ¼ Maine ½ Angus		
YW .....			
Milk .....			
365 PLV <b>166</b>	80 Day ADG <b>3.88</b>	365 REA <b>12.5</b>	
	205 ADJ <b>704</b>	% IM Fat <b>5.28</b>	
	365 ADJ <b>1328</b>	Rib Fat <b>0.31</b>	
	WDA <b>3.54</b>	365 ADJ SCR <b>36</b>	

133	TATTOO F43	COWS AGE 8	TAG COLOR Purple
<b>Pedigreed Polled</b>	Connealy Final Product (AAA15848422)		
	Sitz Investment 660Z (AAA17179119) Sitz Ellunas Elite 656T (AAA15836550)		
BD <b>3/20/16</b>	MR NLC Upgrade U8676 (2474338)		
BW <b>75</b>	<b>R&amp;R Chamberlain X774 (2560508)</b> R&R Miss Traveler T744 (2411047)		
BW .....	<b>OSF</b>		
WW .....	3/8 Simm 5/8 Angus		
YW .....			
Milk .....			
365 PLV <b>142</b>	80 Day ADG <b>4.31</b>	365 REA <b>12.1</b>	
	205 ADJ <b>702</b>	% IM Fat <b>5.06</b>	
	365 ADJ <b>1401</b>	Rib Fat <b>0.24</b>	
	WDA <b>3.61</b>	365 ADJ SCR <b>40</b>	

134	TATTOO F3800	COWS AGE 3	TAG COLOR Lime
<b>Pedigreed Polled</b>	HAA Target 506W (402343)		
	BNWZ Jose 703Y (421509) 24BNWZ Miss 7035 (389039)		
BD <b>4/19/16</b>	GVC Special Delivery 42S (367181)		
BW <b>84</b>	<b>JD Special Wind 3800</b> GVC Sarah Jane 402P		
BW .....	<b>PHAF</b>		
WW .....	Purebred Maine Anjou		
YW .....			
Milk .....			
365 PLV <b>162</b>	80 Day ADG <b>4.13</b>	365 REA <b>17.86</b>	
	205 ADJ <b>679</b>	% IM Fat <b>2.86</b>	
	365 ADJ <b>1316</b>	Rib Fat <b>0.16</b>	
	WDA <b>3.56</b>	365 ADJ SCR <b>33</b>	

135	TATTOO FYP45	COWS AGE 5	TAG COLOR Green & White
<b>Pedigreed Polled</b>	NLC Superior S6018 (2372107)		
	TNT Tanker U263 (2470581) OSF TNT Miss S17 (2374139)		
BD <b>4/23/16</b>	Mr Mom		
BW <b>93</b>	<b>AML-Pfred Tidal P45</b> AML Mom's Wave YP45		
BW .....	<b>OSF</b>		
WW .....	5/8 Simm 3/8 Angus		
YW .....			
Milk .....			
365 PLV <b>162</b>	80 Day ADG <b>3.63</b>	365 REA <b>14.5</b>	
	205 ADJ <b>643</b>	% IM Fat <b>5.10</b>	
	365 ADJ <b>1239</b>	Rib Fat <b>0.13</b>	
	WDA <b>3.39</b>	365 ADJ SCR <b>34</b>	



# Thank You!

**We would like to extend a thank you to everyone who attended our sale and to all of the buyers who purchased bulls or heifers.**

**Thank you for not making inquiries on Sundays.**

**We want to thank the auctioneers for the fine job they have done.**

**Thank you to Cody Palmer and Farm Bureau for part of the dinner supplies and coffee.**

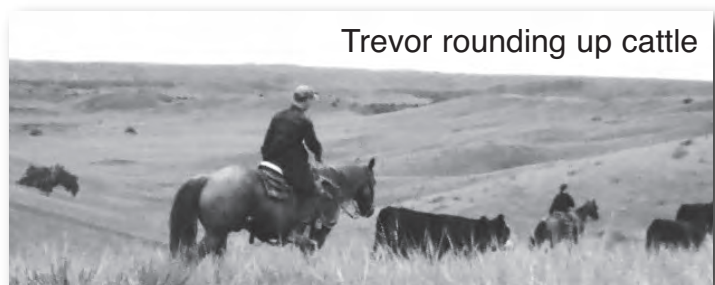
**Thank you to CHS Feeds and the ladies from the cafe for helping serve the dinner.**

**Thank you to Producers Seeds and Justin Blasius for all they have done also.**

**Also a big thank you to all of those who helped in the many different ways of getting ready for and during the bull sale.**

**Mark Winter • Tex Holthus • Bill Vogel • Ben Davis  
and everyone else that helped us out over the year so much**

*Thank you everyone!*





# 5 — 2 YEAR OLD ANGUS BULLS — LOTS 500—504

500	TATTOO DN313	COWS AGE 14	TAG COLOR Black
<b>Registered Polled</b>	Sitz Traveler 8180(AAA11367940) SAVFinal Answer 0035 (AAA13592905) S A V Emulous 8145(AAA13094078)		
	Brookdale Rainmaker 361 (AAA14180886) Brookdale Queen 313 (AAA14586931) Brookdale Queen 1261 (AAA14188877)		
<b>REGISTERED ANGUS</b>			
BD. <b>4/24/15</b> BW..... <b>72</b>	90 Day ADG..... <b>4.02</b>	365 REA.....	365 PLV.....
BW.....	205 ADJ..... <b>748</b>	% IM Fat.....	\$B.....
WW.....	365 ADJ..... <b>1402</b>	Rib Fat.....	
YW.....	WDA..... <b>3.81</b>	365 ADJ SCR.....	
Milk.....			

501	TATTOO DN713	COWS AGE 14	TAG COLOR Black
<b>Registered Polled</b>	Sitz Traveler 8180(AAA11367940) SAVFinal Answer 0035 (AAA13592905) S A V Emulous 8145(AAA13094078)		
	ALC Jackpot R37J (AAA13492024) Brookdale Lassie 713 (AAA14586921) Red Barn Lassie (AAA12844981)		
<b>REGISTERED ANGUS</b>			
BD. <b>4/27/15</b> BW..... <b>74</b>	90 Day ADG..... <b>4.12</b>	365 REA.....	365 PLV.....
BW.....	205 ADJ..... <b>764</b>	% IM Fat.....	\$B.....
WW.....	365 ADJ..... <b>1470</b>	Rib Fat.....	
YW.....	WDA..... <b>3.86</b>	365 ADJ SCR.....	
Milk.....			

502	TATTOO DV713	COWS AGE 11	TAG COLOR Black
<b>Registered Polled</b>	LCC New Standard (AAA14218253) R B Active Duty 010 (AAA16718300) B A Lady 6807 305 (AAA15679812)		
	Connealy Freightliner (AAA13026916) DGL- Freight Jack V713 (AAA18051143) Brookdale Lassie 713 (AAA14586921)		
<b>REGISTERED ANGUS</b>			
BD. <b>4/26/15</b> BW..... <b>86</b>	90 Day ADG..... <b>3.97</b>	365 REA.....	365 PLV.....
BW.....	205 ADJ..... <b>768</b>	% IM Fat.....	\$B.....
WW.....	365 ADJ..... <b>1422</b>	Rib Fat.....	
YW.....	WDA..... <b>3.81</b>	365 ADJ SCR.....	
Milk.....			

503	TATTOO D9038	COWS AGE 7	TAG COLOR Red
<b>Pedigreed Polled</b>	Sitz Traveler 8180(AAA11367940) SAVFinal Answer 0035 (AAA13592905) S A V Emulous 8145(AAA13094078)		
	HARB Pendleton 765 JH (AAA15313140) DGL-New Pendleton 9038 DGL New Trend 1038		
<b>PEDIGREED ANGUS</b>			
BD. <b>4/20/15</b> BW..... <b>84</b>	90 Day ADG..... <b>3.71</b>	365 REA.....	365 PLV.....
BW.....	205 ADJ..... <b>632</b>	% IM Fat.....	\$B.....
WW.....	365 ADJ..... <b>1310</b>	Rib Fat.....	
YW.....	WDA..... <b>3.52</b>	365 ADJ SCR.....	
Milk.....			

504	TATTOO D3211	COWS AGE 12	TAG COLOR Purple
<b>Pedigreed Polled</b>	LCC New Standard (AAA14218253) R B Active Duty 010 (AAA16718300) B A Lady 6807 305 (AAA15679812)		
	Yellowstone VJS Yellow Man 3211 VJS Manhattan 211		
<b>PEDIGREED ANGUS</b>			
BD. <b>4/16/15</b> BW..... <b>92</b>	90 Day ADG..... <b>3.67</b>	365 REA.....	365 PLV.....
BW.....	205 ADJ..... <b>744</b>	% IM Fat.....	\$B.....
WW.....	365 ADJ..... <b>1296</b>	Rib Fat.....	
YW.....	WDA..... <b>3.41</b>	365 ADJ SCR.....	
Milk.....			

**Virgin & semen  
tested  
2 year olds.**

# 5 — 2 YEAR OLD CHAROLAIS BULLS — LOTS 505—509

505	TATTOO D8172	COWS AGE	TAG COLOR Black
<b>Registered Polled</b>	LT Western Edge 4057 PLD (M686616)		
	LT Stagecoach 8068 PLD (M760644)		
	LT Lady Macbeth 2131 PLD ((F956197)		
	AL Cigars Pizazz R517 (M708757)		
	DGL Cigar X2 8172 (F1214176)		
	DGL Cigars Alab 1172 (F121417)		
	<b>REGISTERED CHAROLAIS</b>		
	BD <b>4/25/15</b>	90 Day ADG..... <b>4.03</b>	365 REA.....
	BW..... <b>77</b>	205 ADJ..... <b>648</b>	% IM Fat.....
	BW.....	365 ADJ..... <b>1439</b>	Rib Fat.....
WW.....	WDA..... <b>3.89</b>	365 ADJ SCR.....	
YW.....			
Milk.....			
365 PLV.....			
\$B.....			

506	TATTOO D7881	COWS AGE 9	TAG COLOR White
<b>Registered Polled</b>	Keys McTender 279P (M686129)		
	Keys Ten-Acious 166S (M724532)		
	Miss Key Mabell 73N (F998740)		
	LHD Cigar E46 (M4334790)		
	ML Prime Cigar 7881 (M1214164)		
	ML Prime Lance 2881 (F1214160)		
	<b>REGISTERED CHAROLAIS</b>		
	BD <b>4/21/15</b>	90 Day ADG..... <b>4.37</b>	365 REA.....
	BW..... <b>94</b>	205 ADJ..... <b>792</b>	% IM Fat.....
	BW.....	365 ADJ..... <b>1483</b>	Rib Fat.....
WW.....	WDA..... <b>4.01</b>	365 ADJ SCR.....	
YW.....			
Milk.....			
365 PLV.....			
\$B.....			

507	TATTOO DZ881	COWS AGE	TAG COLOR White
<b>Pedigreed Polled</b>	TR MR Fire Water 5792RET (EM704588)		
	TR MR Firewater 1783 ET (EM809226)		
	Thomas MS Impressive0641 (F873178)		
	LT Ledger 0332 P (M791626)		
	ML-Ledger Water Z881		
	ML Prime Cigar 7881		
	<b>PEDIGREED CHAROLAIS</b>		
	BD <b>4/30/15</b>	90 Day ADG..... <b>3.49</b>	365 REA.....
	BW..... <b>96</b>	205 ADJ..... <b>641</b>	% IM Fat.....
	BW.....	365 ADJ..... <b>1216</b>	Rib Fat.....
WW.....	WDA..... <b>3.27</b>	365 ADJ SCR.....	
YW.....			
Milk.....			
365 PLV.....			
\$B.....			

508	TATTOO D8214	COWS AGE	TAG COLOR Black
<b>Pedigreed Polled</b>	TR MR Fire Water 5792RET (EM704588)		
	TR MR Firewater 1783 ET (EM809226)		
	Thomas MS Impressive0641 (F873178)		
	TR PZC MR Turton 0794 ET(EM790987)		
	ML Turton's Cigar 8214		
	ML Cigar 7214		
	<b>PEDIGREED CHAROLAIS</b>		
	BD <b>5/08/15</b>	90 Day ADG..... <b>3.42</b>	365 REA.....
	BW..... <b>91</b>	205 ADJ..... <b>696</b>	% IM Fat.....
	BW.....	365 ADJ..... <b>1242</b>	Rib Fat.....
WW.....	WDA..... <b>3.29</b>	365 ADJ SCR.....	
YW.....			
Milk.....			
365 PLV.....			
\$B.....			

509	TATTOO	COWS AGE	TAG COLOR White
<b>Pedigreed Polled</b>	LT Assertion 1277 P (M620193)		
	LT Bluegrass 4017 P (M686569)		
	LT Pearl's Breeze 2236 P (F959080)		
	LT Bluegrass 4017 P (M686569)		
	ML EASY Blue Intim 3475		
	ML Easy Intim W475		
	<b>PEDIGREED CHAROLAIS</b>		
	BD <b>4/26/15</b>	90 Day ADG..... <b>3.79</b>	365 REA.....
	BW..... <b>91</b>	205 ADJ..... <b>673</b>	% IM Fat.....
	BW.....	365 ADJ..... <b>1258</b>	Rib Fat.....
WW.....	WDA..... <b>3.42</b>	365 ADJ SCR.....	
YW.....			
Milk.....			
365 PLV.....			
\$B.....			

**Virgin & semen  
tested  
2 year olds.**



**GROUP 1****20 F1 BWF Heifers (AI'D Black Angus)**

(14 DAY BREEDING PERIOD) (CALVING DATES MARCH 8-21) (BREEDING DATES JUNE 8-21)

Tag	AI'd to	Date Bred	Calf Sex	Bangs Number	Pelvic	Owner
56	Final Answer	06/08/16	Heifer	46VKF8144	89	DG
177	Final Answer	06/11/16	Heifer	46VLQ9751	100	AM
189	Final Answer	06/12/16	Heifer	46VLQ9661	91	DG
205	Final Answer	06/13/16	Bull	46VLQ9658	85	DG
233	Final Answer	06/13/16	Heifer	46VLQ9762	91	DG
234	Final Answer	06/13/16	Bull	46VLQ9725	95	DG
238	Final Answer	06/13/16	Bull	46VLQ9772	85	AM
299	Alliance I87	06/14/16	Heifer	46VLQ9746	75	DG
301	Alliance I87	06/14/16	Bull	46VLQ9685	78	DG
304	Alliance I87	06/14/16	Heifer	46VLQ9667	78	TT
305	Alliance I87	06/14/16	Heifer	46VKF8126	78	JD
307	Alliance I87	06/14/16	Bull	46VLQ9768	78	DG
308	Alliance I87	06/14/16	Heifer	46VLQ9775	79	DG
372	Alliance I87	06/16/16	Heifer	46VKF8138	91	DG
405	Alliance I87	06/17/16	Heifer	46VLQ9734	89	AM
454	Alliance I87	06/19/16	Heifer	46VLQ9745	98	AM
455	Alliance I87	06/19/16	Heifer	46VLQ9736	85	DG
456	Alliance I87	06/19/16	Bull	46VLQ9694	92	DG
502	Alliance I87	06/19/16	Heifer	46VKF8163	89	MONTY
533	Final Answer	06/21/16	Heifer	46VLQ9732	85	AM

**GROUP 2****44 COMMERCIAL BLACK ANGUS HEIFERS (AI'D BLACK ANGUS)**

(4 DAY BREEDING PERIOD) (CALVING DATES MARCH 7-10) (BREEDING DATES JUNE 7-10)

Tag	AI'd to	Date Bred	Calf Sex	Bangs Number	Pelvic	Owner
2	Sitz Investment	06/07/16	NA	46VLT6361	89	DG
3	Sitz Investment	06/07/16	Heifer	46VKE9865	85	DG
7	Sitz Investment	06/07/16	Heifer	46VKF8076	91	DG
8	Sitz Investment	06/07/16	Bull	46VKF4015	86	DG
14	Sitz Investment	06/07/16	Heifer	46VLT6423	87	Tanya
27	Sitz Investment	06/07/16	Bull	46VKF8284	86	DG
33	Sitz Investment	06/07/16	Heifer	46VKF4038	85	DG
34	Sitz Investment	06/07/16	Bull	46VKF8087	88	DG
35	Sitz Investment	06/07/16	Heifer	46VKF8199	86	DG
41	Sitz Investment	06/07/16	Bull	46VKE9815	88	DG
42	Sitz Investment	06/07/16	Heifer	46VLT6411	87	DG
44	Sitz Investment	06/08/16	Bull	46VLT6268	91	DG
49	Sitz Investment	06/08/16	Bull	46VLT6346	85	DG
50	Sitz Investment	06/08/16	Heifer	46VKF9891	85	VJ
51	Sitz Investment	06/08/16	Heifer	46VKE9825	85	AM
59	Sitz Investment	06/08/16	Heifer	46VKF8179	84	DG
60	Sitz Investment	06/08/16	Heifer	46VKF4032	84	AM
61	Sitz Investment	06/08/16	Bull	46VKE9818	89	AM
62	Sitz Investment	06/08/16	Heifer	46VKF8174	85	DG
63	Sitz Investment	06/08/16	Heifer	46VKE3978	89	DG
64	Sitz Investment	06/08/16	Bull	46VKF8288	85	DG
66	Sitz Investment	06/08/16	Bull	46AJQ0420	91	DG
67	Sitz Investment	06/08/16	Heifer	46VKE9823	85	AM
81	Sitz Investment	06/08/16	Heifer	46VKE9816	85	DG
82	Sitz Investment	06/08/16	Heifer	46VKE9842	94	DG
83	Sitz Investment	06/09/16	Bull	46VKF4048	89	DG
89	Sitz Investment	06/09/16	Bull	46VKE9870	84	DG
90	Sitz Investment	06/09/16	Bull	4VKF4041	85	AM
91	Sitz Investment	06/09/16	Bull	46VLT6403	94	DG
99	Sitz Investment	06/09/16	Heifer	46VLT6188	95	DG
100	Sitz Investment	06/09/16	Heifer	46VKF8058	89	DG
101	Sitz Investment	06/09/16	Bull	46VKE9884	89	DG
105	Sitz Investment	06/09/16	Heifer	46VKF8167	88	DG
111	Sitz Investment	06/09/16	Bull	46VKE9868	89	DG
119	Sitz Investment	06/09/16	Bull	46VKF4027	91	DG
120	Sitz Investment	06/10/16	Heifer	46VLK9837	85	AM
122	Sitz Investment	06/10/16	Bull	46VKE9836	85	DG
125	Sitz Investment	06/10/16	Heifer	46VKE9879	91	DG
126	Sitz Investment	06/10/16	Bull	46VLT6212	95	DG
127	Sitz Investment	06/10/16	Bull	46VKE9857	88	AM
131	Sitz Investment	06/10/16	Heifer	46VKF7185	98	DG
143	Sitz Investment	06/10/16	Bull	46VLT6215	89	DG
146	Sitz Investment	06/10/16	Bull	46VLT6392	85	DG

**GROUP 3****68 COMMERCIAL BLACK ANGUS HEIFERS (AI'D BLACK ANGUS)**

(9 DAY BREEDING PERIOD) (CALVING DATES MARCH 11-19) (BREEDING DATES JUNE 11-19)

Tag	AI'd to	Date Bred	Calf Sex	Bangs Number	Pelvic	Owner
154	Cedar Ridge	06/11/16	NA	46VLT6222	95	JD
156	Cedar Ridge	06/11/16	Heifer	46VKE9863	85	AM
157	Cedar Ridge	06/11/16	Heifer	46VKE9809	85	DG
158	Cedar Ridge	06/11/16	Heifer	46VLT6357	89	Kaylea
160	Cedar Ridge	06/11/16	Heifer	46VKF8202	NA	DG
161	Cedar Ridge	06/11/16	Heifer	46VKE9830	85	DG
169	Cedar Ridge	06/11/16	Heifer	46VLT6184	85	DG
172	Cedar Ridge	06/11/16	Bull	46VKE9858	85	DG
174	Cedar Ridge	06/11/16	Heifer	46VKE9881	89	DG
175	Cedar Ridge	06/11/16	Bull	46VKF8189	83	DG
183	Cedar Ridge	06/12/16	Heifer	46VKF4010	89	DG
190	Cedar Ridge	06/12/16	Bull	46VKE9846	85	DG
192	Cedar Ridge	06/12/16	Bull	46VKE9874	83	DG
209	Cedar Ridge	06/13/16	Bull	46VKF8071	91	DG
243	Cedar Ridge	06/13/16	Heifer	46VKF8171	89	DG
245	Cedar Ridge	06/13/16	Bull	46AJQ0422	89	DG
246	Cedar Ridge	06/13/16	Heifer	46VME3985	89	DG
247	Cedar Ridge	06/13/16	Heifer	46VLT6179	85	DG
248	Cedar Ridge	06/13/16	Heifer	46VLF7589	75	DM
249	Cedar Ridge	06/13/16	Bull	46VKF8190	85	DG
252	Cedar Ridge	06/13/16	Bull	46VKF7323	86	DM
288	Cedar Ridge	06/14/16	Bull	46VKE9888	85	DG
291	Cedar Ridge	06/14/16	Bull	46VLT6162	85	DG
292	Cedar Ridge	06/14/16	Bull	46VLT6330	91	TT
293	Cedar Ridge	06/14/16	Heifer	46VKF8089	104	DG
294	Cedar Ridge	06/14/16	Heifer	46VKE9890	91	AM
296	Cedar Ridge	06/14/16	Bull	46VKF8197	85	DG
297	Cedar Ridge	06/14/16	Bull	46VLT6264	89	DG
315	Cedar Ridge	06/14/16	Bull	46VKF4043	91	DG
316	Cedar Ridge	06/14/16	Bull	46VLT6205	89	DG
321	Cedar Ridge	06/14/16	Bull	46VKF8082	91	DG
324	Cedar Ridge	06/14/16	Heifer	46VKF8283	89	DG
336	Cedar Ridge	06/15/16	Heifer	46VKF4055	91	DG
337	Cedar Ridge	06/15/16	Bull	46VLT6194	91	DG
345	Cedar Ridge	06/15/16	Heifer	46VKF4017	89	DG
347	Cedar Ridge	06/15/16	Heifer	46VKF4009	85	DG
348	Cedar Ridge	06/15/16	Heifer	46VKE9880	85	AM
350	Cedar Ridge	06/15/16	Heifer	46 VKF4006	85	AM
351	Cedar Ridge	06/01516	Bull	46VKF8205	88	DG
353	Cedar Ridge	06/15/16	Bull	46VKE9839	91	DG
355	Cedar Ridge	06/16/16	Bull	46VKE9893	91	AM
359	Cedar Ridge	06/16/16	Bull	46VME3983	91	DG
363	Cedar Ridge	06/16/16	Bull	46VKF7197	93	DG
364	Cedar Ridge	06/16/16	Heifer	46VLT6315	91	DG
365	Cedar Ridge	06/16/16	Bull	46VKF8097	94	DG
366	Cedar Ridge	06/16/16	Bull	46VKF4040	88	DG
367	Cedar Ridge	06/16/16	Bull	46VLT6308	96	AM
377	Cedar Ridge	06/16/16	Bull	46VKF8217	91	DG
386	Cedar Ridge	06/17/16	Heifer	46VKF8219	85	DG
387	Cedar Ridge	06/17/16	Heifer	46VLT6274	85	DG
388	Cedar Ridge	06/17/16	Heifer	46VKF8175	NA	DG
391	Cedar Ridge	06/17/16	Heifer	46VKF4053	91	DG
392	Cedar Ridge	06/17/16	Bull	46VKF4012	NA	DG
395	Cedar Ridge	06/17/16	Bull	46VKE9817	85	DG
411	Cedar Ridge	06/18/16	Bull	46VKE9835	89	DG
413	Cedar Ridge	06/18/16	Heifer	46VKF8173	88	DG
428	Cedar Ridge	06/18/16	Heifer	46VKF4008	94	AM
429	Cedar Ridge	06/18/16	Bull	46VKE9875	94	DG
430	Cedar Ridge	06/18/16	Bull	46VLT6317	93	AM
434	Cedar Ridge	06/18/16	Heifer	46VKE9872	91	DG
435	Cedar Ridge	06/18/16	Heifer	46VKF8291	85	DG
438	Cedar Ridge	06/18/16	Heifer	46VKE9886	88	DG
440	Cedar Ridge	06/18/16	Heifer	46VLF7281	NA	DG
462	Cedar Ridge	06/19/16	Bull	46VLT6424	85	AM
468	Cedar Ridge	06/19/16	Bull	46VKE9813	91	DG
503	Cedar Ridge	06/19/16	Heifer	46VKF8163	85	DG
504	Cedar Ridge	06/19/16	Heifer	46VKE9895	109	DG
506	Cedar Ridge	06/19/16	Heifer	46VKF9876	91	JD



**GROUP 4****38 COMMERCIAL BLACK ANGUS HEIFERS (AI'D BLACK ANGUS)**

(13 DAY BREEDING PERIOD) (CALVING DATES MARCH 9-21) (BREEDING DATES JUNE 9-21)

Tag	AI'd to	Date Bred	Calf Sex	Bangs Number	Pelvic	Owner
80	Long Distance	06/09/16	Bull	46VLF7355	101	DM
109	Long Distance	06/09/16	Bull	46VKF7360	91	DM
110	Long Distance	06/09/16	Bull	46VKF7358	78	DM
152	Long Distance	06/10/16	Heifer	46VLF7326	89	DM
170	Long Distance	06/11/16	Heifer	46VLF7405	91	DM
191	Long Distance	06/11/16	Heifer	46VLF7317	86	DM
194	Long Distance	06/12/16	NA	46VLF7399	102	DM
197	Long Distance	06/12/16	Heifer	46VLF7431	97	DM
210	Long Distance	06/13/16	Heifer	46VLF7365	78	DM
317	Long Distance	06/14/16	Bull	46VLF7296	76	DM
319	Long Distance	06/14/16	Bull	46VKF8063	88	DG
325	Long Distance	06/14/16	Bull	46VLF7372	89	DM
356	Long Distance	06/16/16	Heifer	46VLF7294	75	DM
379	Long Distance	06/16/16	Heifer	46VLF7280	102	DM
381	Long Distance	06/16/16	Heifer	46VLF7303	92	DM
409	Long Distance	06/17/16	Heifer	46VLF7344	76	DM
410	Long Distance	06/18/16	Bull	46VLF7265	88	DM
426	Long Distance	06/18/16	Bull	46VLF7306	79	DM
433	Long Distance	06/18/16	Heifer	46AHP6793	85	DM
439	Long Distance	06/18/16	Heifer	46VLF7281	94	DM
443	Long Distance	06/19/16	Heifer	46VLF7354	80	DM
444	Long Distance	06/19/16	Heifer	46VLF7335	85	DM
447	Long Distance	06/19/16	Heifer	46VLF7338	79	DM
448	Long Distance	06/19/16	Bull	46VLF7286	79	DM
449	Long Distance	06/19/16	Bull	46VLF7407	89	DM
451	Long Distance	06/19/16	Bull	46VLF7390	76	DM
452	Long Distance	06/19/16	Heifer	46VLF7287	89	DM
453	Long Distance	06/19/16	Bull	46VLF7385	82	DM
485	Long Distance	06/19/16	Bull	46VLF7369	79	DM
487	Long Distance	06/19/16	Bull	46VLF7414	98	DM
488	Long Distance	06/19/16	Heifer	46VLF7411	95	DM
489	Long Distance	06/19/16	NA	46VLF7334	90	DM
514	Long Distance	06/20/16	NA	46VLF7342	95	DM
517	Long Distance	06/20/16	Heifer	46VLF7264	82	DM
519	Long Distance	06/20/16	Heifer	46VLF7321	92	DM
524	Long Distance	06/20/16	Bull	46VLF7366	89	DM
525	Long Distance	06/20/16	Heifer	46VLF7404	79	DM
539	Long Distance	06/21/16	Bull	46VLF7364	85	DM

**GROUP 5****31 COMMERCIAL BLACK ANGUS HEIFERS (AI'D BLACK ANGUS)**

(6 DAY BREEDING PERIOD) (CALVING DATES MARCH 20-25) (BREEDING DATES JUNE 20-25)

Tag	AI'd to	Date Bred	Calf Sex	Bangs Number	Pelvic	Owner
511	Super Sub	06/20/16	Bull	46VKF7116	NA	DG
512	Super Sub	06/20/16	Heifer	46VKF8095	83	D
515	Super Sub	06/20/16	Heifer	46VKF8170	85	DG
516	Super Sub	06/20/16	Bull	46VKE9878	85	DG
522	Super Sub	06/20/16	Bull	46VKE9838	91	AM
527	Super Sub	06/20/16	Heifer	46VKF4060	85	DG
532	Super Sub	06/21/16	NA	46VLT6156	92	TT
535	Super Sub	06/21/16	Heifer	46VKF8182	85	DG
536	Super Sub	06/20/16	Bull	46VKF8177	85	DG
540	Super Sub	06/21/16	Bull	46VLT6345	94	AM
542	Super Sub	06/22/16	NA	46VKE9804	91	DG
544	Super Sub	06/22/16	Heifer	46VLT6248	98	DG
546	Super Sub	06/22/16	Heifer	46VLT6337	91	DG
547	Super Sub	06/22/16	Heifer	46VLT6400	85	DG
548	Super Sub	06/22/16	Heifer	46VKF8067	85	DG
549	Super Sub	06/22/16	Heifer	46VKF8064	91	DG
553	Super Sub	06/22/16	Heifer	46VLT6216	95	DG
576	Super Sub	06/22/16	Bull	46VKF7146	89	DG
578	Super Sub	06/23/16	Heifer	46VLT6320	91	DG
579	Super Sub	06/23/16	Heifer	46VKF8172	91	DG
581	Super Sub	06/23/16	Bull	46VKF8218	91	DG
582	Super Sub	06/23/16	Bull	46VLT6177	94	DG
587	Super Sub	06/23/16	Heifer	46VKF9888	88	DG
597	Super Sub	06/23/16	Heifer	46VLT6321	95	JD
598	Super Sub	06/23/16	Bull	46VLT6253	109	DG

## GROUP 5 CONTINUED —

Tag	AI'd to	Date Bred	Calf Sex	Bangs Number	Pelvic	Owner
599	Super Sub	06/24/16	Heifer	46VKF4056	91	DG
600	Super Sub	06/24/16	Heifer	46VKF9859	85	AM
601	Super Sub	06/24/16	Heifer	46VKF8079	91	DG
616	Super Sub	06/25/16	Bull	46VKF8059	98	DG
617	Super Sub	06/25/16	Bull	46VLT6299	85	DG
618	Super Sub	06/25/16	Heifer	46VLT6352	92	DG
619	Super Sub	06/25/16	Heifer	46VKF8211	91	DG
621	Super Sub	06/25/16	Heifer	46VKE9897	85	DG

## GROUP 6

### 10 COMMERCIAL BLACK ANGUS HEIFERS (AI'D BLACK ANGUS)

(3 DAY BREEDING PERIOD) (CALVING DATES MARCH 25-27) (BREEDING DATES JUNE 25-27)

Tag	AI'd to	Date Bred	Calf Sex	Bangs Number	Pelvic	Owner
623	Really Windy 1205	06/25/16	Bull	46VKF8193	85	DG
624	Really Windy 1205	06/25/16	Bull	46VKF8065	85	DG
626	Really Windy 1205	06/25/16	Bull	46VKF4001	89	AM
634	Really Windy 1205	06/26/16	Bull	46VKF4019	85	DG
636	Really Windy 1205	06/26/16	Heifer	46VLT6326	97	AM
637	Really Windy 1205	06/26/16	Bull	46VKF4061	85	DG
639	Really Windy 1205	06/27/16	Heifer	46VLT6237	91	DG
642	Really Windy 1205	06/27/16	Bull	46VKE9811	85	DG
643	Really Windy 1205	06/27/16	Heifer	46VKE9900	91	DG
644	Really Windy 1205	06/27/16	Bull	46VLT6324	92	DG

## GROUP 7

### 5 COMMERCIAL BLACK ANGUS HEIFERS (AI'D BLACK ANGUS)

(1 DAY BREEDING PERIOD) (CALVING DATES MARCH 22) (BREEDING DATES JUNE 22)

Tag	AI'd to	Date Bred	Calf Sex	Bangs Number	Pelvic	Owner
565	Stevens Maximus 42C	06/22/16	Bull	46VKF8098	91	DG
566	Stevens Maximus 42C	06/22/16	Heifer	46VKE9828	104	AM
567	Stevens Maximus 42C	06/22/16	Bull	46VKE9821	89	DG
570	Stevens Maximus 42C	06/22/16	Bull	46VME3987	95	DG
571	Stevens Maximus 42C	06/22/16	Heifer	46VLT6257	95	DG

## GROUP 8

### 4 COMMERCIAL BLACK ANGUS HEIFERS (AI'D BLACK ANGUS)

(1 DAY BREEDING PERIOD) (CALVING DATES MARCH 23) (BREEDING DATES JUNE 23)

Tag	AI'd to	Date Bred	Calf Sex	Bangs Number	Pelvic	Owner
589	Conneally Whitman	06/23/16	Heifer	46VKE9843	91	DG
590	Conneally Whitman	06/23/16	Bull	46VLT6382	88	DG
594	Conneally Whitman	06/23/16	Bull	46VLT6203	89	AM
596	Conneally Whitman	06/23/16	Heifer	46VKF4030	85	DG

## GROUP 9

### 5 COMMERCIAL BLACK ANGUS HEIFERS (AI'D BLACK ANGUS)

(2 DAY BREEDING PERIOD) (CALVING DATES MARCH 24-25) (BREEDING DATES JUNE 24-25)

Tag	AI'd to	Date Bred	Calf Sex	Bangs Number	Pelvic	Owner
607	Brilliance	06/24/16	Heifer	46VLT6418	91	TT
610	Brilliance	06/24/16	Bull	46KF8196	85	DG
611	Brilliance	06/24/16	Bull	46VKE9867	85	DG
613	Brilliance	06/25/16	Heifer	46VKF4005	89	DG
615	Brilliance	06/25/16	Heifer	46VKF8212	95	DG



**GROUP 10****37 COMMERCIAL RED ANGUS HEIFERS (AI'D RED ANGUS)**

WHITE TAG GROUP (13 DAY BREEDING PERIOD) (CALVING DATES MARCH 7-19) (BREEDING DATES JUNE 7-19)

Tag	AI'd to	Date Bred	Calf Sex	Bangs Number	Pelvic	Owner
19	Redemption	06/07/16	Heifer	46VLB4869	85	DG
72	Redemption	06/08/16	Bull	46VLB4877	98	AM
97	Redemption	06/09/16	Heifer	46VLB4879	95	DG
116	Redemption	06/09/16	Heifer	46VLB4768	78	DG
134	Redemption	06/10/16	Heifer	46VME3964	85	DG
144	Redemption	06/10/16	Bull	46VLB4786	91	DG
195	Redemption	06/12/16	Bull	46VLB4785	101	DG
196	Redemption	06/12/16	Heifer	46VLB4798	79	DG
207	Redemption	06/13/16	Bull	46VLB4900	111	DG
208	Redemption	06/13/16	Bull	46VLB4771	91	JD
221	Redemption	06/13/16	Heifer	46VLB4864	88	DG
223	Redemption	06/13/16	Heifer	46VLB4782	89	DG
230	Redemption	06/13/16	Bull	46AJQ0424	91	DG
231	Redemption	06/13/16	Bull	46VLB4777	89	DG
232	Redemption	06/13/16	Bull	46VLB4795	78	DG
254	Redemption	06/14/16	Heifer	46VLB4793	94	DG
255	Redemption	06/14/16	NA	46VLB4830	87	AM
257	Redemption	06/14/16	Heifer	46VLB4843	95	DG
259	Redemption	06/14/16	Heifer	46VLB4844	97	DG
260	Redemption	06/14/16	Bull	46VLB4783	94	DG
262	Redemption	06/14/16	Heifer	46VME3930	99	DG
263	Redemption	06/14/16	Bull	46VLB4820	94	DG
264	Redemption	06/14/16	Bull	46VLB4804	98	DG
265	Redemption	06/14/16	Bull	46VLB4849	89	DG
266	Redemption	06/14/16	Bull	46VLB4775	91	TT
268	Redemption	06/14/16	Bull	46VLB4855	88	DG
272	Redemption	06/014/16	Bull	46AJQ0426	89	DG
274	Redemption	06/14/16	Bull	46VLB4822	94	Kaylea
286	Redemption	06/14/16	Heifer	46VME3972	85	DG
326	Redemption	06/15/16	Heifer	46VLB4826	97	TT
329	Redemption	06/15/16	Bull	46VLB4815	92	TT
332	Redemption	06/15/16	Bull	46VLB4876	91	DG
341	Redemption	06/15/16	Bull	46VLB4848	95	DG
369	Redemption	06/16/16	Heifer	46VLB4859	91	DG
424	Redemption	06/18/16	Bull	46VLB4794	106	DG
457	Redemption	06/19/16	Bull	46VLB4840	101	DG
505	Redemption	06/19/16	Bull	46VLB4871	102	AM

**GROUP 11****11 COMMERCIAL RED ANGUS HEIFERS (BULL BRED RED ANGUS)**

YELLOW TAG GROUP (10 DAY BREEDING PERIOD) (CALVING DATES APRIL 1-10) (BREEDING DATES JULY 1-10)

Tag	Bred To	Date Bred	Calf Sex	Bangs Number	Pelvic	Owner
20	Make My Day Son	07/04/16	NA	46VLB4878	79	DG
21	Make My Day Son	07/03/16	Heifer	46VLB4874	98	DG
57	Make My Day Son	07/02/16	Bull	46VLB4797	89	AM
70	Make My Day Son	07/10/16	NA	46VLB4902	92	DG
71	Make My Day Son	07/02/16	Bull	46VLB4860	91	DG
96	Make My Day Son	07/10/16	NS	46VLB4886	95	DG
162	Make My Day Son	07/01/16	Bull	46VLB4770	104	DG
222	Make My Day Son	07/07/16	NS	46VME3967	88	DG
253	Make My Day Son	07/04/16	NS	46VLB4799	102	DG
271	Make My Day Son	07/03/16	NS	46VLB4845	101	DG
327	Make My Day Son	07/01/16	NS	46VLB4800	102	DG

**GROUP 12****5 COMMERCIAL RED ANGUS HEIFERS (BULL BRED RED ANGUS)**

BLUE TAG GROUP (6 DAY BREEDING PERIOD) (CALVING DATES APRIL 20-25) (BREEDING DATES JULY 20-25)

Tag	Bred To	Date Bred	Calf Sex	Bangs Number	Pelvic	Owner
16	Make My Day Son	07/20/16	NA	46VLB4875	89	Tanya
228	Make My Day Son	7/20/16	NA	46VLB4801	79	DG
267	Make My Day Son	7/20/16	NA	46VLB4788	102	DG
330	Make My Day Son	7/25/16	NA	46VME3968	94	DG
331	Make My Day Son	7/25/16	NA	46VLB4853	93	DG

# GROUP 13

## 16 PEDIGREED BLACK ANGUS HEIFERS (AI'D BLACK ANGUS)

PURPLE TAG GROUP (14 DAY BREEDING PERIOD) (CALVING DATES MARCH 07-20) (BREEDING DATES JUNE 07-20)

Tag	Bred to	Date Bred	Calf Sex	Bangs Number	Sire	Dam's Sire	Pelvic	Owner
18 (890)	Sitz Investment	6/07/16	Bull	46VKF8245	Uproar	Dateline (Quantum)	89	MTT
55 (0213)	Sitz Investment	6/08/16	Heifer	46VKF8144	Long Distance	Final Answer (Pfred/QAS Traveler 23-4)	89	DG
75 (192)	Sitz Investment	6/08/16	Bull	46VKF8303	Uproar	Providence (Quantum)	91	DG
78 (Z213)	Sitz Investment	6/08/16	Heifer	46VKF8051	Final Answer Y313	Final Answer (Really Windy 1205/Pfred/QAS Traveler 23-4)	85	DG
94 (0673)	Sitz Investment	6/09/16	Bull	46VKF8312	Unanimous	Traveler 004-640 (Foreman/Bruno/Canadian Colossal)	89	V&J
114 (Y001)	Sitz Investment	6/09/16	Bull	46VKF8231	Final Answer Y313	Aberdeen (Really Windy 1205/TC Advantage)	89	Monty
139 (2673)	Sitz Investment	6/10/16	Bull	46VKF8239	Final Answer R313	Tiger (Foreman/Bruno/Canadian Colossal)	85	V&J
342 (T31)	Cedar Ridge	6/15/16	Heifer	46VKF8295	Unanimous	Grid Iron (Jackpot)	89	Monty
370 (303)	Cedar Ridge	6/16/16	Heifer	46VKF8264	Long Distance	Prowler (Yellowstone/Hi Hand)	89	V&J
416 (1038)	Cedar Ridge	6/18/16	Heifer	46VKF8256	Really Windy 1205	Really Windy 10 (Pendleton/New Trend 409)	89	DG
422 (R204)	Cedar Ridge	6/18/16	Heifer	46VKF8160	Active Duty	Special Design	93	V&J
475 (4105)	Cedar Ridge	6/19/16	Heifer	46VKF8296	Final Answer	Hall Of Fame (Freightliner/0105)	93	Audie
476 (9313)	Super Sub	6/19/16	Heifer	46VKF8054	Final Answer	Traveler 004 (Really Windy 1205/Rainmaker)	95	DG
501 (B002)	Cedar Ridge	6/19/16	Heifer	46VKF8149	Long Distance	Tiger (Bismark/Yellowstone/R&J Spade 961/QAS Traveler 23-4)	88	Monty
530 (863)	Super Sub	6/20/16	Bull	46VKF8309	Final Answer X313	Fame 848 (Jackpot/Rainmaker 7598)	85	AM
531 (1179)	Super Sub	6/20/16	Heifer	46VKF8257	Uproar	Bismark (Bruno/Hi Spade/Vermillion Husker)	91	Audie

# GROUP 14

## 9 PEDIGREED BLACK ANGUS HEIFERS (BULL BRED BLACK ANGUS)

GREEN TAG GROUP (12 DAY BREEDING PERIOD) (CALVING DATES APRIL 01-12) (BREEDING DATES JULY 01-12)

Tag	Bred to	Date Bred	Calf Sex	Bangs Number	Sire	Dam's Sire	Pelvic	Owner
76 (1680)	Outback 231	7/12/16	NA	46VKF8244	Final Answer	Aberdeen (Really Windy 1205/Pfred)	85	V&J
79 (S204)	Outback 231	7/15/16	Bull	46VKF8158	Tiger 213	Freightliner ( U204 cow)		VJ
149 (50)	Outback 231	7/01/16	Heifer	46VKF8299	Final Answer	Angus	89	Tanya
166 (692)	Outback 231	7/04/16	Bull	46VKF8304	Stevenson's Fortune 425C	Bruno	93	Monty
371 (XL95)	Outback 231	7/12/16	NA	46VKF8265	Substance	Final Answer (Kaboom/Freightliner/Emulation 625)	91	V&J
404 (9800)	Outback 231	7/12/16	NA	46VKF8130	Final Answer	Traveler 004-640 (Really Windy 1205/Pfred)	91	V&J
415 (7711)	Outback 231	7/12/16	NA	46VK8161	Angus	Really Windy 1205(St. Fortune 425C/Bando 598-909)	85	V&J
478 (S001)	Outback 231	7/03/16	NA	46VKF8154	Substance	Really Windy 1205 (TC Advantage)	95	Monty
483 (Z91)	Outback 231	7/07/16	NA	46VKF8143	Final Answer Y313	Really Windy 826 (Nichols Extra/Rolls Royce 131)	95	DM

# GROUP 15

## 5 PEDIGREED BLACK ANGUS HEIFERS (BULL BRED BLACK ANGUS)

WHITE TAG GROUP (22 DAY BREEDING PERIOD) (CALVING DATES APRIL 25-MAY 15) (BREEDING DATES JULY 25-AUGUST 15)

Tag	Bred to	Date Bred	Calf Sex	Bangs Number	Sire	Dam's Sire	Pelvic	Owner
11 (W001)	Outback 231	7/25/16	NA	46AJQ0427	Freightliner	Traveler 004 (TC Advantage)	85	Monty
167 (292)	Outback 231	7/25/16	NA	46VKF8235	Unanimous	Traveler 004 (Quantum)	91	DG
479 (3R17)	Outback 231	8/10/16	NA	46AGN8892	Long Distance	Freightliner (Kaboom)	89	DG
529 (W168)	Outback 231	8/15/16	NA	46VKF8153	Uproar	Traveler 004 (Freightliner)	91	Monty
B443 (49)	Outback 231	7/15/16	NA	46VKF8225	Final Answer V663	Really Windy 1205 (Special Design)	NA	Audie



**GROUP 16****9 CHAROLAIS HEIFER (AI'D CHAROLAIS)**

BLACK TAG GROUP (12 DAY BREEDING PERIOD) (CALVING DATES MARCH 7-18) (BREEDING DATES JUNE 7-18)

Tag	AI'd to	Date Bred	Calf Sex	Bangs Number	Sire	Dam's Sire	Pelvic	Owner
13 (R413)	Wrangler	6/07/16	Bull	46VKF8106	Firewater 1783	Bluegrass (RA Big Cat)	93	Audie
112 (T775)	Wrangler	6/09/16	NA	46VME3997	Blue Grass	(DGL Cigars Fancy One N775/RA Big Cat/BHD)	89	DG
136 (9814)	Wrangler	6/10/16	NA	46VKF8305	Blue Grass	Cigar R881 (20-20)	91	DG
140 (3X75)	Wrangler	6/10/16	NA	46VKF8110	Blue Grass	Firewater (Husker/RABig Cat/BHD)	97	DG
213 (3413)	Wrangler	6/13/16	NA	46VKF8229	Blue Grass	Blue Grass (Husker/20-20)	102	Audie
219 (0429)	Big Ben	6/13/16	NA	46VKF8118	Montezuma	Eli'Ali (Prime Cut/Alabama/Chaps 24)	100	Monty
278 (B895)	Big Ben	6/14/16	NA	46VME3999	Blue Grass	Easy Cigar 6775 (Blue Grass/KL Big Festus /Prime Cut)	95	DG
279 (1577)	Big Ben	6/14/16	NA	46VKF8300	Ledger	Easy Cigar 6775 (Schurrtop Dominion)	85	DG
420 9375)	No Doubt	6/14/16	NA	46VME4000	Ledger	Easy Cigar 6775 (RA Big Cat)	95	DG

**GROUP 17****3 CHAROLAIS HEIFER (BULL BRED RED ANGUS)**

BLUE TAG GROUP (17 DAY BREEDING PERIOD) (CALVING DATES MARCH 29-APRIL 15) (BREEDING DATES JUNE 29-JULY 15)

Tag	Bred to	Date Bred	Calf Sex	Bangs Number	Sire	Dam's Sire	Pelvic	Owner
280 (S895)	Red Angus	7/15/16	NA	46VKF8046	Firewater 1783	KL Big Festus (Prime Cut)	95	DG
281 (X801)	Red Angus	7/01/16	NA	46VKF8277	Blue Grass	Unlimited Ease (Prime Cut/Unlimited Ease/Blizzard/Alabama)	89	DG
383 (Z928)	Red Angus	6/29/16	NA	46VKF8114	Ledger 18	Easy Cigar 6775 (KL Big Festus/20-20)	96	DG

**GROUP 18****2 SIMMENTAL HEIFERS (BULL BRED BLACK ANGUS)**

ORANGE TAG GROUP (30 DAY BREEDING PERIOD) (CALVING DATES APRIL 15-MAY 15) (BREEDING DATES JULY 15-AUGUST 15)

Tag	Bred to	Date Bred	Calf Sex	Bangs Number	Sire	Dam's Sire	Pelvic	Owner
137 (Y45)	Outback 231	7/15/16	NA	46VKF8109	Jose	Special Delivery (Habano 339/Mo Betta/Tidal Wave)	85	AM
480 (3781)	Outback 231	8/15/16	NA	46VKF8055	Final Answer	NLC Upgrade (Mo Betta/Double Digit/Cunia)	NA	Audie

**GROUP 19****1 MAINE ANJOU HEIFER (AI'D SIMMENTAL)**

LIME GREEN TAG GROUP (1 DAY BREEDING PERIOD) (CALVING DATES MARCH 13) (BREEDING DATES JUNE 13)

Tag	AI'd to	Date Bred	Calf Sex	Bangs Number	Sire	Dam's Sire	Pelvic	Owner
218 (T800)	Nite Ride	6/13/16	Heifer	46VKF8272	Jose	Tic Toc (Who Made Who/Pfred)	91	AM

**GROUP 20****1 MAINE ANJOU (BULL BRED BLACK ANGUS)**

LIME GREEN TAG GROUP (1 DAY BREEDING PERIOD) (CALVING DATES MARCH 13) (BREEDING DATES JUNE 13)

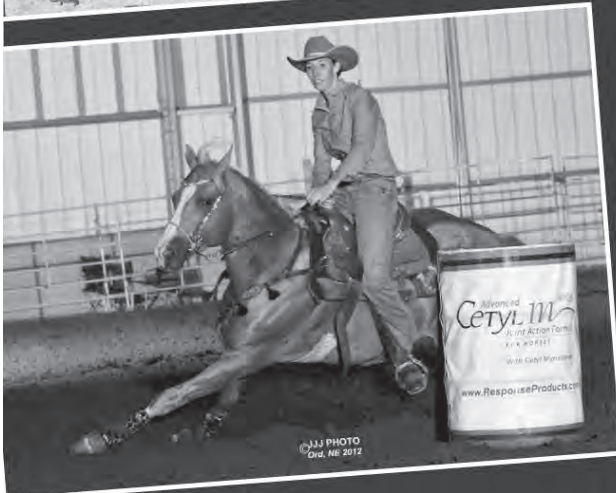
Tag	Bred to	Date Bred	Calf Sex	Bangs Number	Sire	Dam's Sire	Pelvic	Owner
176 (009)	Outback 231	7/21/16	NA	46VKF8104	Maverick 1006	Jakes Proud Jazz	85	Kaylea

# AHL FIREWATER N ICE

He is currently in training and being used on the ranch.



AHL Firewater N Ice is a full bother to AHL Codysgolden Jets and AHL Firewater Twister, both accomplished and consistent winners in barrels, poles as well as competing in high school rodeo events. His sire Firewater Jets is a full brother to barrel money earner FIREWATER SQUAW, proven Brazilian AQHA stallions, FIREWATER FAST and STRAIT FIRE WATER as well as futurity money earner TALLDRINKOFWATER. His dam HL Top Doc Cody is a granddaughter of AQHA World Champion TOPSAIL CODY, Million Dollar NRHA Stallion and sire of Topsail Whiz, NRHA 9 Million Dollar Sire. Her Maternal FGrandsire, PAPRIKA PINE is an NCHA Money Earner and Producer.



- |                 |   |                       |   |                  |
|-----------------|---|-----------------------|---|------------------|
| Firewater Jets  | { | Fire Water Flit si 86 | { | Flit Bar si 65   |
|                 |   | Sassy Miss Jones      | { | Slash J Harletta |
| HL Top Doc Cody | { | Topsail Tony          | { | Pa Jones         |
|                 |   | Krogs Barbie          | { | Sassy Shipmate   |
|                 |   |                       | { | Topsail Cody     |
|                 |   |                       | { | Shi Bar Beauty   |
|                 |   |                       | { | Paprika Pine     |
|                 |   |                       | { | Barbedahleo      |

**INCENTIVES:**

- Select Stallion Stakes
- Double J Futurity



**Full Sisters to Firewater N Ice**



Shipped Frozen Semen \$950 LFG

**Audie & Holly Larson  
Hamill. SD  
ahlarson@gwtc.net  
Larsonranchllc.com**



**Plus Horses for Sale at Private Treaty on the Ranch**

**Home: 605-842-0260  
Cell: 605-842-5415**



# 2016 CHAMPIONS



Class winning Angus Heifer 2016 WJLS  
*Shown by Jesse*



Reserve Chamion Angus Bull 2016 WJLS  
*Shown by Trace*



Grand Champion Charolais Bull WJLS 2016  
*Shown by Jesse*



Reserve Champion Maine Anjou feeder heifer  
*Shown by Jesse*



# 2015 CHAMPIONS



2015 WJLS Champion  
Charolais Bull  
Shown by Jesse



2015 WJLS Reserve Champion  
Charolais Heifer  
Shown by Jesse



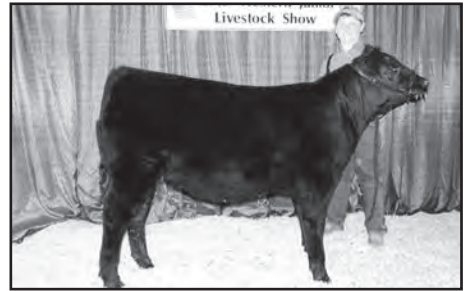
Shown by Jesse



2015 WJLS 2nd Place Steer  
Shown by Trace



2015 WJLS 2nd Place Heifer  
Shown by Trace



2015 WJLS Class Winning Heifer  
Shown by Jesse

# 2014 & 2012 CHAMPIONS



2014 Beef  
Shown by Jesse  
Champion Beginner  
Showman



2012 SD State Fair Champion  
Maine Anjou Bull  
Raised by the Larson Ranch.  
Owned by Larson Ranch and Bill Vogel  
Shown by Wayne Dwyer  
Maverick son



SD 2012 High Point Champion  
Charolais Heifer  
Shown by Trevor  
Fire Maker daughter



2012 WJLS Reserve Champion  
Charolais Bull  
Shown by Trace



2012 Eye Candy Market Steer  
Shown by Trevor



2012 Class Winning Heifer  
Shown by Jesse  
Monopoly daughter



# 2006-2011 CHAMPIONS



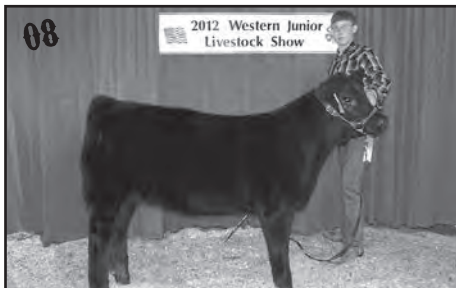
Grand Champion Shorthorn Heifer – WJLS  
Grand Champion Shorthorn Heifer,  
Grand Champion Bred & Owned Heifer – Mid Dakota Fair  
Shown by Kaylea



Class Winning Charolais Heifer  
Shown by Trevor



Reserve Grand Champion Charolais Bull – WJLS  
Shown by Tanya



Grand Champion English Bull – Mid Dakota Fair  
Class Winner – WJLS  
Shown by Trevor



Grand Champion Heifer – Mid Dakota Fair  
Jakes Proud Jazz x Sin City – Shown by Kaylea



GRAND CHAMPION HEIFER  
SD State Fair Shorthorn Special • SD State Fair 4-H Show  
Brookings County Invitational • Brookings County Achievement Days  
Reserve Champion - SD State Fair open class • Reserve Champion WJLS  
3rd Place Shorthorn Junior Nationals  
Shown by Kaylea



Foreman (X) 1418  
Class Winning Angus Bull Calf - WJLS



Grand Champion Charolais Bull - WJLS  
Shown by Trevor



Grand Champion English Heifer – Mid Dakota Fair  
Shown by Trevor



Grand Champion English Bred Heifer  
Shown by Tanya



Grand Champion English – Bred Heifer  
Mid Dakota Fair – Shown by Trace



Hand County Feeder Calf Show – Ch. Charolais  
Wessington Springs Showdown – Ch. Charolais  
Miner County Feeder Calf Show – Res. Ch. Charolais  
Watertown Thanksgiving Blowout – Res. Ch. Charolais  
Brookings Feeder Calf Show – Ch. Charolais  
Davison County Feeder Calf Show – Ch. Charolais,  
Res. Overall Exotic Heifer  
Shown by Savannah Vogel



# 2002-2005 CHAMPIONS



**KL Hotshot**

Second High Selling Maine Anjou Bull BHSS  
Whiskey for my Men X Habanero  
Purchased by Fred and Sue Connelly Feb., 2006 BHSS



Reserve Champion Charolais Bull - WJLS  
Reserve Champion Exotic Bull - Mid Dakota  
Reserve Champion Overall Breeds Bull Mid Dakota  
Shown by Kaylea



2003 Champion Over All Breeds Bull Mid-Dakota  
2003 Champion Yearling Charolais Bull BHSS  
2003 High Selling Charolais Bull BHSS



Grand Champion Charolais Bull – WJLS



Champion Cow/Calf Pair • Champion Mid Dakota Bull  
Reserve Champion BHSS Charolais Bull  
Owned and Shown by Kaylea  
KL Big Festus



2004 Grand Champion Charolais Bull –  
WJLS – Rapid City  
2004 Grand Champion Cow/Calf Pair  
Owned & Shown by Kaylea



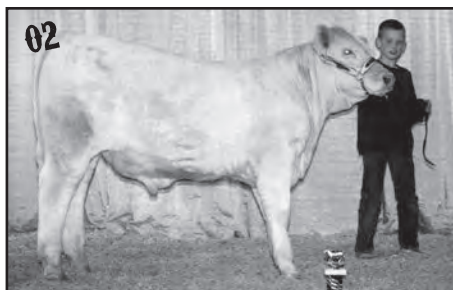
Class Winning steer – WJLS Rapid City  
3rd Place Overall Futurity Market Steer – WJLS Rapid City  
(This steer was shrunk 140' pounds in 15 days before the show to  
make weight and still graded choice-)



Cigar X Blizzard  
Grand Champion Bull - Mid-Dakota • Grand Champion Charolais Bull - WJLS  
Reserve Champion All Breeds - WJLS  
Purchased by Dave Miller & Bernard Donahue BHSS - 1/2 Interest



Grand Champion Charolais Heifer – WJLS  
Sired by RA Big Cat - Mother to KL Big Festus  
Owned & Shown by Kaylea



Grand Champion Exotic Bull – Mid-Dakota Fair  
Grand Champion All Breeds Bull – Mid Dakota Fair  
Reserve Champion Other Breeds Bull – WJLS  
Shown by Trevor • Sired by Cigar



Reserve Champion 2001  
Bred & Owned Bred Heifer



Reserve Champion Angus Bred Heifer  
ACC Bando 598-909 daughter

The three kids have showed in 4-H the last five years, previously, Audie, Monty and Vicki showed over the years, with numerous Grand Champions, Reserve Champions and Carcass Champions. In 2003 for the first time, Monty showed a yearling Charolais Bull at the Black Hills Stock Show, and received Grand Champion yearling bull and high selling bull. In 2004 Kaylea had Reserve Champion Charolais Bull BHSS. In 2006 Kaylea had 2nd High Selling Maine Anjou Bull. Audie had high selling charolais bull at the BHSS. The 3 kids exhibited cattle at the Mid-Dakota fair and WJLS, Rapid City and were fortunate enough to receive:

Grand Champion - 3 year old cow/calf pair - 9 years  
Reserve Champion - 3 year old cow/calf pair - 8 years  
Grand Champion - 2 year old cow/calf pair - 8 years

Reserve Champion - Yearling bred & owner heifer - 8 years  
Grand Champion - Yearling bred & owned - 8 years  
Reserve Champion - Bull calf overall breeds

## Boarding of Bulls After the Sale

We can take all the bulls home and keep them free of charge until May 1. Any bull that brings over \$5,000 will be kept free of charge until May 1, 2017. We will charge \$2.00 per day to keep bulls extra days. It would be greatly appreciated if all bulls could be picked up by May 1st, 2016, or as soon as possible. As the weather warms up, the bulls run a higher risk of injury due to riding & fighting. We will do our best to care for the bulls but injuries can happen. Thank you VERY much.

## Suggested Guidelines for Best Results When Using Yearling Bulls

We are firm believers in the use of yearling bulls and feel it is one of the best years of their lives. It is a time when they are easy to manage and their only concern is breeding cows. We have found that when yearling bulls are managed carefully during the second year of their lives, they will perform better over time than bulls purchased as two-year-olds. Here are some suggested guidelines for care of yearling bulls.”

- Upon receipt at your ranch, keep yearling bulls separate from older bulls and feed them a maintenance ration of 3-5 lbs/head of grain (corn, oats or bull pellets) and free choice of hay. Reduce the amount of grain fed gradually, so bulls are on straight hay or grass 2 weeks prior to turning them out.
- Where possible, try to limit the bulls to 45-60 days of pasture service the first year. At this time or as soon as possible, remove the bulls and put them in separate pastures with plenty of good quality grass.
- It is best to feed yearling bulls separate from older bulls until after their second breeding season. This allows them to achieve the growth and strength necessary to compete with older bulls for feed and space.
- A winter feeding ration of 2-4 lbs. of grain, cake or pellets, plus free choice hay will put the bulls in condition and allow them to grow and develop through the winter.

The little added cost and care of feeding a yearling bull is usually made up for the average discount in price when buying yearlings versus two year olds. You will also benefit by one and probably two or three more years use out of a well-managed and healthy bull purchased as a yearling.

We believe in the use of yearling bulls; and caring for them through their second season.

## SALE TERMS AND CONDITIONS

Except for those stated in the below terms and conditions, there is no warranties, either expressed or implied, as to merchantability of fitness for a particular purpose with respect to the livestock being sold at this auction. The warranties and guarantees set forth in the “terms and conditions” are in lieu of all other warranties, either expressed or implies, and the remedies provided therein shall be the sole and exclusive remedy of the buyer, or any party claiming through buyer, for any breach of warranty or guarantee therein provided, and all other obligations or liabilities.

### Bidding

Each animal will be sold to the highest bidder without reserve. The person in charge will settle any disputes as to bids, and his decision on such matter shall be final.

### Announcements

Any changes from information of any kind in this catalog will be announced from the auction box and such announcements shall take precedence.

### Breeding Guarantee

1. All animals are guaranteed to be breeders, with the exception of” a) Calves under twelve months of age, b) Animals shown by purchaser after the sale (in cases of animals shown after purchase, the breeding guarantees, if any shall be such as agreed upon between the seller and the buyer); c) Injury or disease occurring after the sale; d) Gross negligence or willful misconduct on the part of the purchaser.

2. **Bulls** are guaranteed breeders if not allowed to run with the herd until at least 12 months of age. Any bull which settles cows by natural service and passes fertility test made by competent fertility tester, mutually agreed upon by buyer and seller, during 6 month period of trial (provided for in paragraph 2 of the section of these sales terms and conditions) shall be considered a breeder. Any guaranties with respect to the ability to freeze semen shall be by separate agreement between the buyer and seller.

3. **Safe in Calf Females** have been examined by a competent veterinarian and are so guaranteed.







Larson Family Ranch  
Hamill, SD 57534

Darrell 605-842-3749  
Audie 605-842-0260  
Monty 605-842-2023  
Joel 605-473-1888  
Shay 605-208-1177

PRESORTED  
FIRST-CLASS MAIL  
U.S. POSTAGE PAID  
Pierre, SD 57501  
Permit No. 123



WT ↑  
L/L  
H/T  
2T  
T ←  
KL  
3L  
C H →  
2 ↑ L